

12/11/2024 | 6:30 PM

**Municipal Services Center, Lower Level Conference Room  
3600 Tremont Road**

If you are joining through Zoom, please click the link below to join the meeting:

<https://us06web.zoom.us/j/87383605075?pwd=UCtWVE9Pcm02R2tMRC94a3E2ZE1udz09>

Meeting ID: 873 8360 5075

Passcode: 562065

Join by Phone: 877-853-5257

1. **Call to Order/Roll Call**
2. **Approval of Minutes**
  - a. Approve 10.28.24 Parks and Recreation Advisory Board Meeting Minutes
3. **Presentations**
  - a. Recognition of Board Member Mary Duchi
  - b. Introduction of Aktion Club
4. **Unfinished Business**
  - a. Community Center Update
5. **New Business**
  - a. Board By-Laws Review
  - b. Capital Improvements Program
  - c. 2025 Aquatic and Tennis Fee Structure
6. **Updates & Reports**
  - a. Director's Report
7. **Board Member Comments and Setting Future Agenda Items**
8. **Adjournment**

Monday, October 28, 2024  
6:30 pm  
Lower-Level Meeting Room

**CALL TO ORDER**

Meeting was called to order by Chair Christ at 6:32pm.

**Members Present:**

Sean Caine                       Caroline O'Donnell  
 Lindsey Christ                       Craig Smith  
 Mary Duchi                       Allison Thomas  
 Brian Noble

**Staff Present:**

Parks & Recreation Director Debbie McLaughlin  
 Administrative Assistant Brooke Bowman

**Other Staff Present:** Parks & Forestry Superintendent Sam Simmons, Park Development & Arts Superintendent Jeff Anderson, Recreation Superintendent Matt Leber, Recreation Manager Eliese Kendrick

**APPROVAL OF MEETING MINUTES**

Motion to approve minutes of the Parks & Recreation Advisory Board from the August 14, 2024, meeting.

**Motioned:** Smith

**Seconded:** Noble

**Board Discussion:** None

**Voting Aye:** Christ, Noble, O'Donnell, Smith, Thomas

**Abstain:** None

**Motion Passed**

**AGENDA ITEM- Introduction of New Staff**

Recreation Superintendent Matt Leber introduced the new Recreation Manager, Eliese Kendrick. Additionally, the new Aquatics Manager, Joshua Miller, will start work on Monday. The second round of interviews for the Aquatic Coordinator position is currently underway.

**ACTION/DISCUSSION ITEMS- ONGOING BUSINESS**

**AGENDA ITEM- Bob Crane Community Center Update**

Park Development & Arts Superintendent Jeff Anderson presented a PowerPoint to the Board, highlighting updates on the construction progress at the Bob Crane Community Center. All construction

activities remain on schedule for a Spring 2025 opening date (attached hereto as Exhibit A). The parking deck is wrapping up construction and is anticipated to open before Thanksgiving.

Director McLaughlin informed the Board about upcoming discovery sessions, both virtual and in-person, allowing attendees to learn more about the Bob Crane Community Center and its operations.

### **ACTION/DISCUSSION ITEMS- NEW BUSINESS**

#### **AGENDA ITEM- Fancyburg Master Plan**

Mr. Anderson provided background on the community engagement activities conducted over the summer including sharing images of potential ideas as part of this engagement process. Mr. Anderson reviewed the results from various survey questions, which informed the conceptual program priorities for the park. Mr. Anderson introduced Doug from the Edge Group, who presented the preliminary plan for Fancyburg Park. Mr. Anderson outlined the next steps following this presentation including another round of community engagement in 2025 (attached hereto as Exhibit B).

Board members asked about inclusion of improving drainage for the soccer fields and if parking remains within the same area to explore park efficiency and capacity with expanded pavilion.

#### **AGENDA ITEM- Devon Toddler Pool**

Mr. Anderson reviewed the community engagement schedule from the summer and discussed the received survey results. He introduced Katie Freeland from MSA Design, who proceeded with the presentation regarding the Devon Toddler Pool and the proposed concept. (attached hereto as Exhibit C).

In response to Board Chair Christ's invitation for public comment, the following speakers addressed the Board:

- Elaine Long expressed her desire for Devon to maintain its current character without major changes, suggesting that construction should not shorten the summer experience. She also advocated for the addition of steps leading into the main pool with the rails included.

Mr. Anderson informed the Board of the next steps following tonight's meeting, noting that this presentation will be submitted to the Council next Monday.

#### **AGENDA ITEM- Athletic Turf Management Plan**

Parks and Forestry Superintendent Sam Simmons provided the Board with an annual update on the Athletic Turf Management Plan (attached hereto as Exhibit D). Ms. Simmons proposed changes to the current Athletic Field Turf Management Policy, including the replacement of the term "dormant" with "off-season" on page two, and the adjustment of the language in the matrix to keep the "up to 1" but remove "November" as a limitation (attached hereto as Exhibit E).

Board members suggested creating public awareness with use of grow blankets.

Chair Christ asked for a **MOTION** to support the changes made to the Athletic Field Turf Management Policy.

**Motioned:** Noble

**Seconded:** Thomas  
**Voting Aye:** Christ, Noble, O'Donnell, Smith, Thomas  
**Abstain:** None  
**Motion Passed**

**ITEM- Park Rules**

Director McLaughlin reviewed the proposed changes, additions, and edits to the Park Rules, specifically regarding the use of motorized vehicles or devices within the parks (attached hereto as Exhibit F). These modifications are based on input from staff and review of industry best practices. Board member Noble recommended a further change to add e-cigarettes to the section on tobacco items not permitted in parks. Board members suggested exploring methods to communicate Park Rules including condensed rules posted with QR code to website for full rules.

Chair Christ asked for a **MOTION** to support the proposed changes to the Park Rules as amended.

**Motioned:** Smith  
**Seconded:** Noble  
**Voting Aye:** Christ, Noble, O'Donnell, Smith, Thomas  
**Abstain:** None  
**Motion Passed**

**AGENDA ITEM- Board Member Comments and Setting Future Agenda Items**

Chair Christ informed the Board that Board Member Mary Duchi has resigned after many years of dedicated service to the city and the Parks and Recreation Department. Chair Christ acknowledged Mary's commitment and welcomed suggestions for honoring her contributions. The City Council will issue a call for applications and appoint a new Board member.

Chair Christ asked for a **Motion** to excuse Sean Caine from the October 28, 2024, Parks & Recreation Advisory Board meeting.

**Motioned:** O'Donnell  
**Seconded:** Smith  
**Voting Aye:** Christ, Noble, O'Donnell, Smith, Thomas  
**Abstain:** None  
**Motion Passed**

**ACTION/DISCUSSION ITEMS- Updates & Reports**

**AGENDA ITEM- Directors Report**

Director McLaughlin continued the Directors Report with the following item:

- Invitation from City Clerk for Boards and Commission member recognition event on Tuesday November 12<sup>th</sup> at 6pm at the Amelita Mirolo Barn.
- Mr. Anderson gave an update on Northam Park Tennis timeline is wrapping up, pickleball court lines have been painted and the building is finishing up. On track for a mid-December completion.

- Mr. Leber informed the Board that a 4<sup>th</sup> location for summer day camp is being added to be able to accommodate more children. Two locations at schools will be 9 weeklong camp and the two park shelter locations will be 10 weeklong camps.
- Mr. Leber mentioned that staff is collaborating with UA School District regarding our approach and resources for adaptive recreation programs and services.

**AGENDA ITEM- Setting Future Agenda Items**

- Aktion Club
- By-laws review
- Capital Improvement Program

**ADJOURNMENT**

**Motioned:** O'Donnell

**Seconded:** Thomas

**Voting Aye:** Christ, Noble, O'Donnell, Smith, Thomas

**Abstain:** None

**Motion Passed**

**Meeting was adjourned at 8: 41pm**

---

**Chairperson**

**ATTEST:** \_\_\_\_\_  
**Secretary**

# Parks & Recreation Advisory Board

10/28/2024



**PARKS & REC**  
City of Upper Arlington

# BOB CRANE COMMUNITY CENTER



**PARKS & REC**  
City of Upper Arlington



**PARKS & REC**  
City of Upper Arlington



**PARKS & REC**  
City of Upper Arlington



**PARKS & REC**  
City of Upper Arlington

# DISCOVERY SESSIONS

A series of Discovery Sessions for the Bob Crane Community Center are scheduled in November. Attendees can obtain updates on construction progress, learn more about the Event Center and other rental facilities, and speak with team members about the part-time employment and contract instructor/trainer opportunities. Gift cards that can be used towards memberships will also be on sale.

## **VIRTUAL DISCOVERY SESSION**

**Noon-1 pm, Friday, November 8**

**Join the Meeting:** [//us06web.zoom.us/j/89172337874](https://us06web.zoom.us/j/89172337874)

**Meeting ID:** 891 7233 7874 | **Passcode:** 066030



**SCAN TO  
JOIN  
MEETING**

## **IN PERSON DISCOVERY SESSIONS**

**5-7 pm, Wednesday, November 13**

**9-11 am, Saturday, November 16**

Municipal Services Center, 3600 Tremont Road

***We hope you can join us!***



**PARKS & REC**  
City of Upper Arlington

# FANCYBURG PARK MASTER PLAN



**PARKS & REC**  
City of Upper Arlington

# Community Engagement Schedule

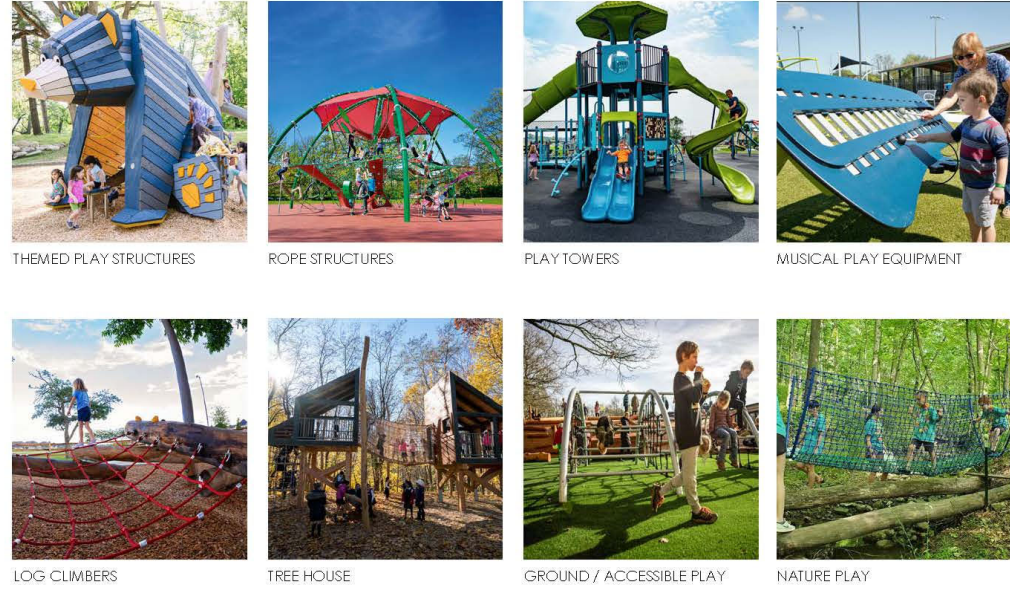
- Online Survey – August 1 to August 31 (905 Responses)
- Staff and Design Team at National Night Out – August 6
- Staff and Design Team at Farmers Market– August 7



**PARKS & REC**  
City of Upper Arlington

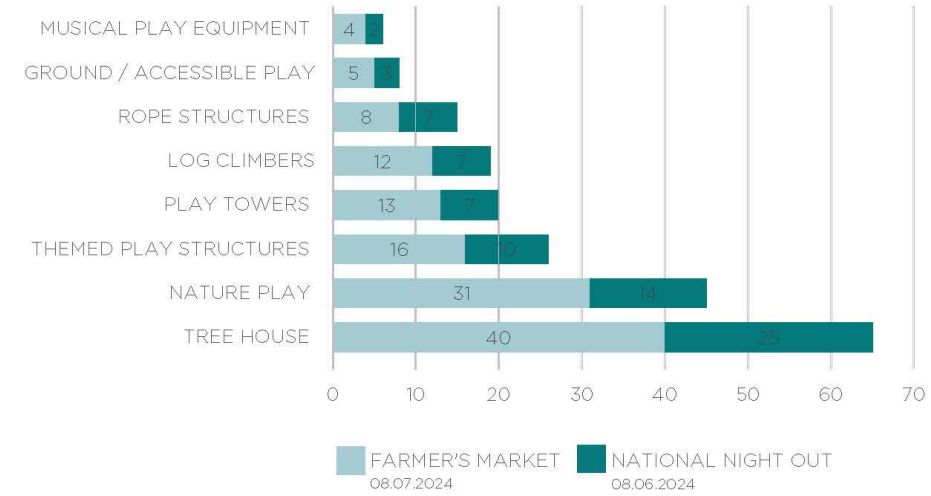
## 2 Community Engagement

### Play

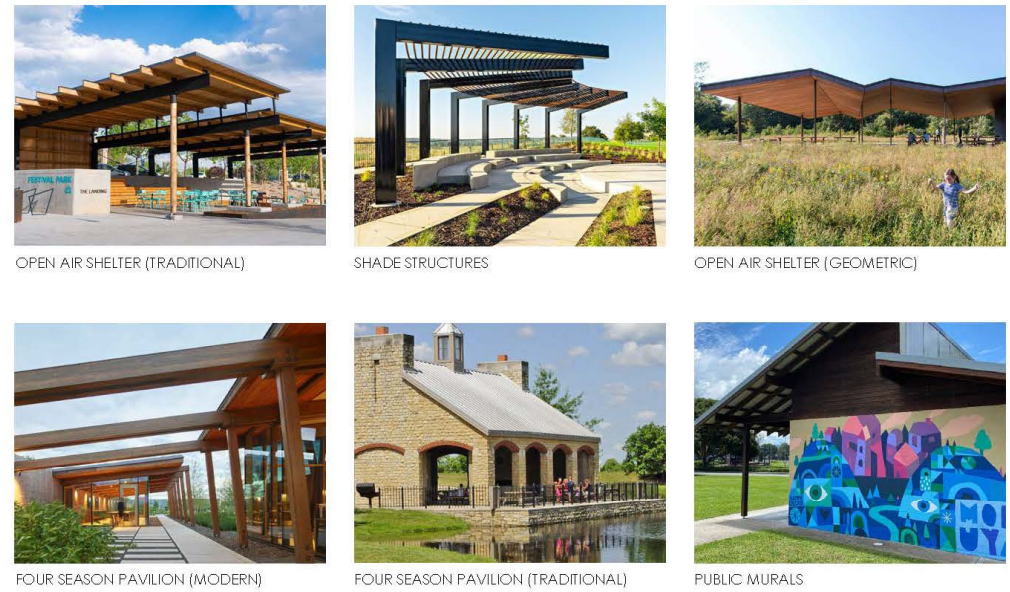


### Community Engagement Feedback

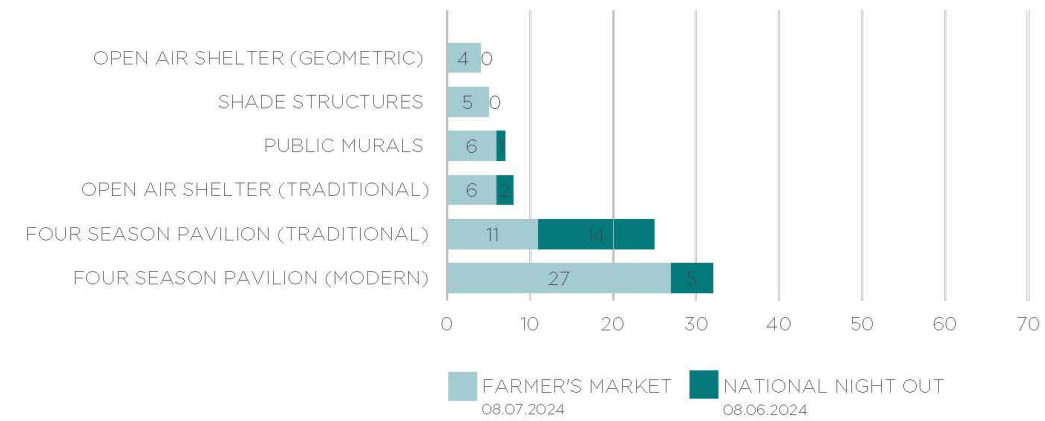
Play



### Architecture



Architecture



Fancyburg Park Masterplan | 2024  
03 October 2024

PAGE 3



## 2 Community Engagement

### Passive Recreation



NATURE PATH / BOARDWALK



WOODLAND PATH



POLLINATOR MEADOW



WALKING TRAIL



INTERACTIVE WETLAND



SMALL GROUP SEATING

### Active Recreation



BASEBALL / SOFTBALL



TENNIS



MEASURED RUN / WALK ROUTES



BASKETBALL



SPORTS FIELDS

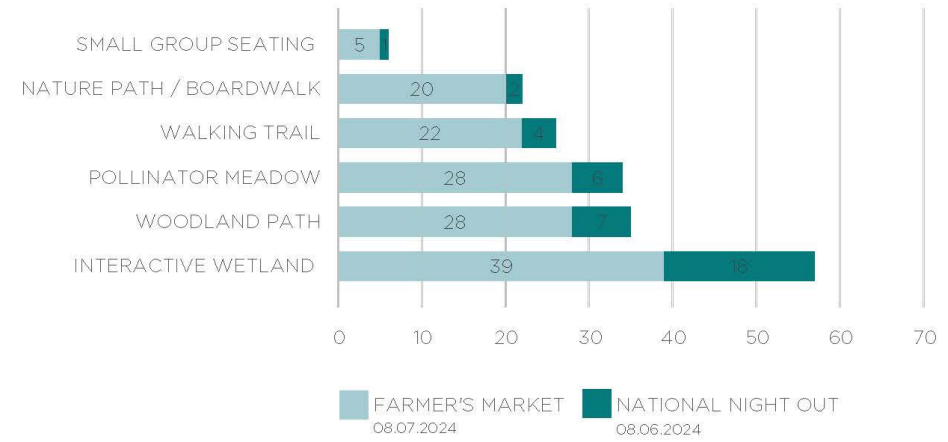


PICKLEBALL

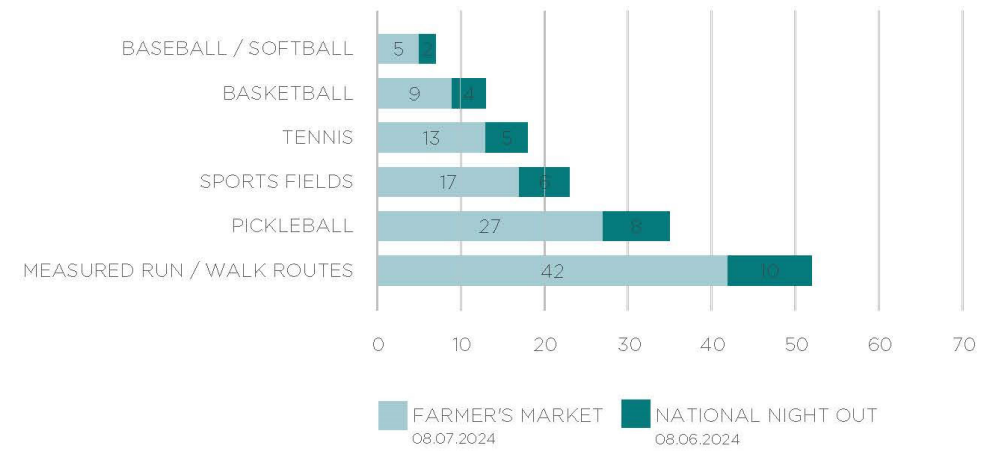
Fancyburg Park Masterplan | 2024  
03 October 2024

### Community Engagement Feedback

Passive  
Recreation



Active  
Recreation



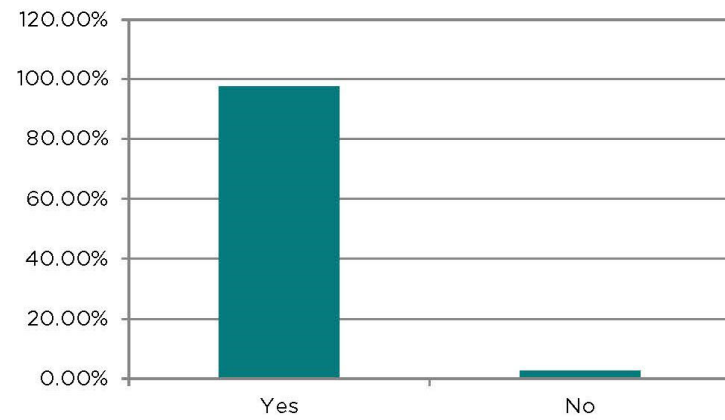
PAGE 4



**PARKS & REC**  
City of Upper Arlington

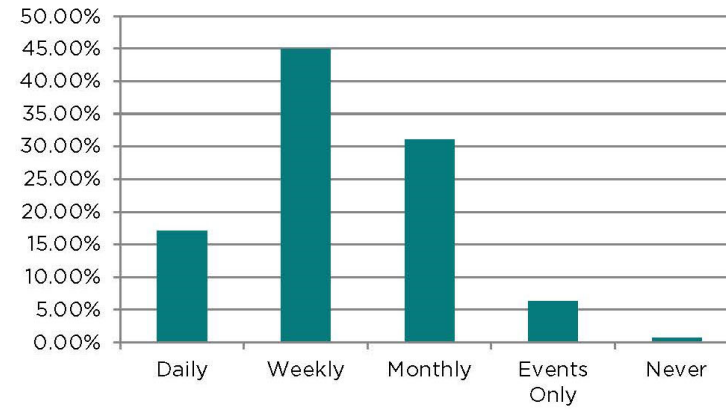
## 2 Online Survey

Question 1: Are you a City of Upper Arlington resident?



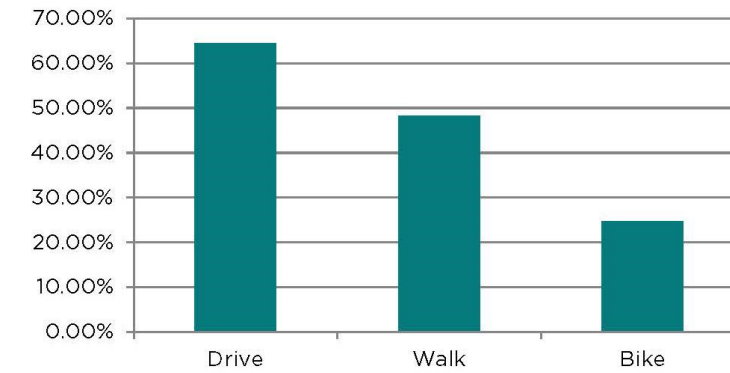
Answer Choices	Responses
Yes	97.35% 881
No	2.65% 24
<b>Total</b>	<b>905</b>

Question 2: How often do you visit Fancyburg Park?



Answer Choices	Responses
Daily	17.13% 155
Weekly	44.86% 406
Monthly	31.05% 281
Events Only	6.30% 57
Never	0.66% 6
<b>Total</b>	<b>905</b>

Question 3: How do you and/or your family typically get to Fancyburg Park? (Select all that apply)



Answer Choices	Responses
Drive	64.42% 583
Walk	48.29% 437
Bike	24.64% 223
<b>Total</b>	<b>905</b>

# Most Important Activities (based on ranking as a 4 or 5)

1. Year Round Restrooms – 88%
2. Natural Areas (Woods/Meadows) – 88%
3. Traditional Playground – 83%
4. Nature Play Areas – 80%
5. Paved Walking Paths – 82%
6. Nature Trails – 78%
7. Park Shelters – 73%
8. Open Lawn – 73%
9. Off-Street Parking – 63%
10. Sports Fields – 61%
11. Accessible Play Options – 58%
12. Pathway Lighting – 55%
13. Signage (Story Walk, Tree Trek) – 47%
14. Tennis Courts – 43%
15. Pickelball Courts – 32%
16. Public Art – 27%
17. Basketball Courts – 26%
18. Fitness Equipment – 24%



# What do you like best about Fancyburg Park?

- Natural Spaces and Trails
- Playground
- Sport Facilities
- Community Gathering
- Location and Accessibility
- Size and Open Space
- Variety of Activities

# What would you like to be improved at Fancyburg Park ?

- Natural and Environmental Focus
- Modern Amenities
- Safety and Accessibility
- Recreational Enhancements
- Parking and Infrastructure
- Community and Aesthetic Features



# What other amenities should be considered for Fancyburg Park?

- Splash Pad
- Drinking Fountains
- Dog-Friendly Amenities
- Play Areas
- Environmental Enhancements
- Restrooms
- Pickleball Courts
- Benches and Picnic Areas
- Trails
- Community Spaces



# Conceptual Program Priorities

## Active Recreation

- Tennis Courts
- Pickleball Courts
- Playground Equipment

## Passive Recreation

- Walking Paths
- Woodland Paths
- Tree Trek
- Storybook Walk
- Meadow Plantings

## Amenities

- Compost and Dumpster
- Bicycle Parking
- Fountain / Bottle Filler
- Benches
- Trash/Recycling
- Picnic Tables
- Dog Waste Bags
- Grills

## Shelter

- Indoor Space for ~120
- Year Round Restrooms

## Service Area

- Tree Staging
- Equipment Storage



# Additional Requests

## Nature Play

- Enhance and expand existing areas

## Open Air Shelter

- Separate or combine with main shelter

## Splash Pad

- Requires extensive infrastructure
- High capital and maintenance cost
- Consider how use fits in the park

## Dog Park

- Requires larger area than what is available in the park





**PARKS & REC**  
City of Upper Arlington

# Next Steps

- Site Survey – Winter 2025
- Additional Community Engagement – January/February 2025
- Mater Plan Package Developed – Spring 2025
- Updated Presentations to PRAB and Council Spring 2025
- Detailed Design of Maintenance Area – Summer 2025
- Relocation of Maintenance Area – 2026



# DEVON POOL TODDLER FEATURE



**PARKS & REC**  
City of Upper Arlington

# Community Engagement Schedule

- Online Survey – June 21 to July 31 (433 Responses)
- Staff and Design Team at the Pool – July 11, 12 and 13



# Most Important Activities (based on ranking as a 4 or 5)

1. Shallow Open Water for Children Under 5 – 88%
2. Shaded Lounging Areas – 85%
3. Age Appropriate Splash Features – 70%
4. Zero Entry Access to Water – 66%
5. Area for children under 5 that is separate from the main pool – 61%
6. Ground Level Spray Features – 47%
7. Open Deck Space – 39%
8. Table Based Water Play – 37%
9. Open Grass Area – 35%
10. Area for Children Under 5 that is connected to the main pool – 33%
11. Sunny Lounging Areas – 31%



# What do you like best about the existing Toddler Pool?

- Separation and Safety
- Size and Depth
- Features and Design
- Shade and Comfort
- Maintenance and Cleanliness



# What do you like least about the existing Toddler Pool?

- Accessibility and Safety
- Lack of Features
- Maintenance Issues



# What amenities should be considered for a new toddler feature?

- Zero Entry
- Shade
- Interactive Water Features
- Separation from Main Pool
- Slides and Play Structures
- Safety and Accessibility
- Variety and Engagement



# Is there anything else you would like to share with us?

**Peaceful Atmosphere:** Many appreciate Devon's quiet and calm environment, which differs from the more active pools like Tremont and Reed Road.

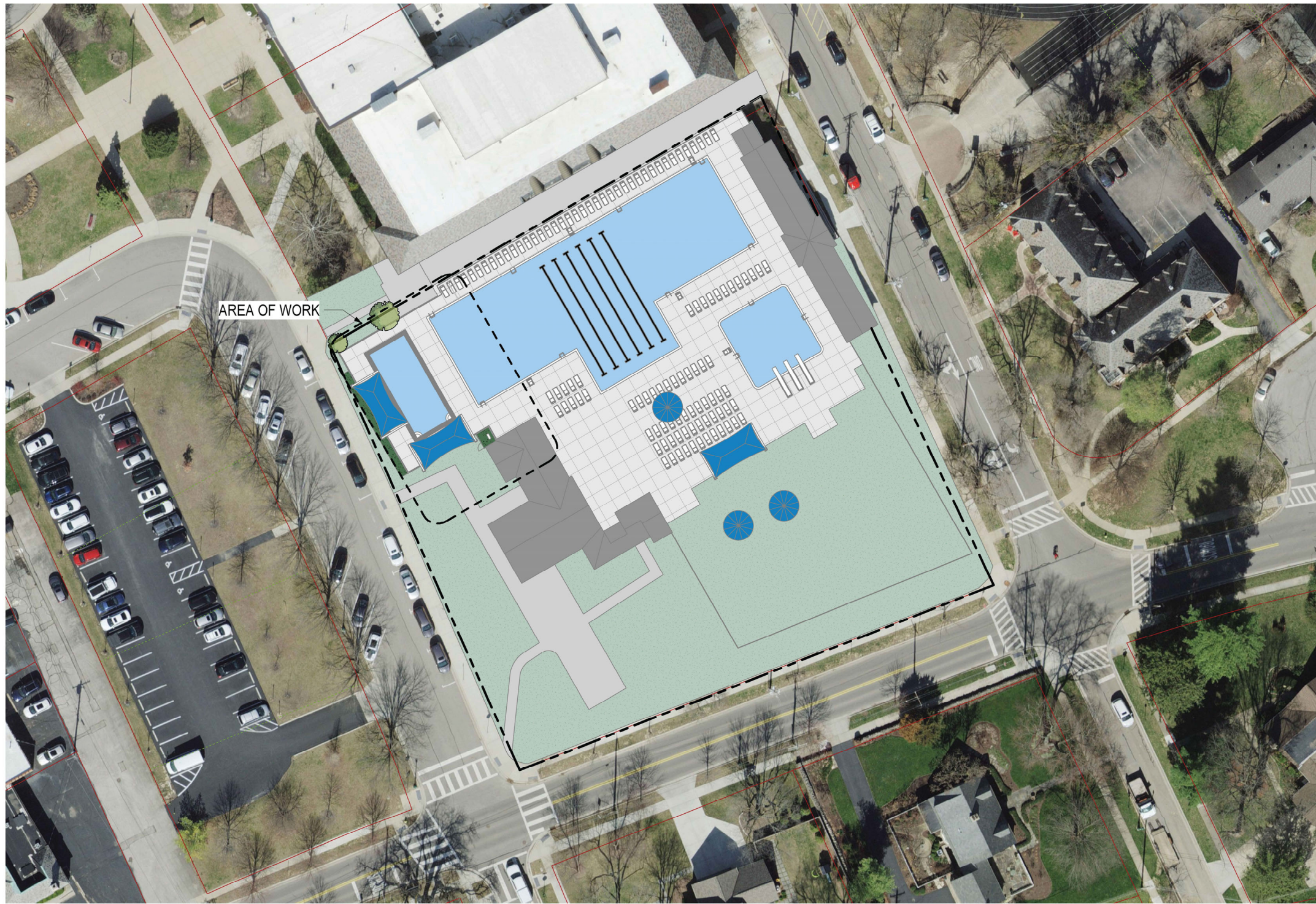
**Simplicity:** Preference for a simple design that encourages imaginative play rather than flashy attractions.

**Respecting Devon's Unique Character:** Maintain the pool's unique character while making necessary improvements.

**Design:** Balance between simplicity and adding engaging features that enhance the pool's appeal.

**Safety:** Ensure any changes prioritize safety, including accessible facilities and clear visibility for lifeguards.





EXISTING OVERALL SITE PLAN

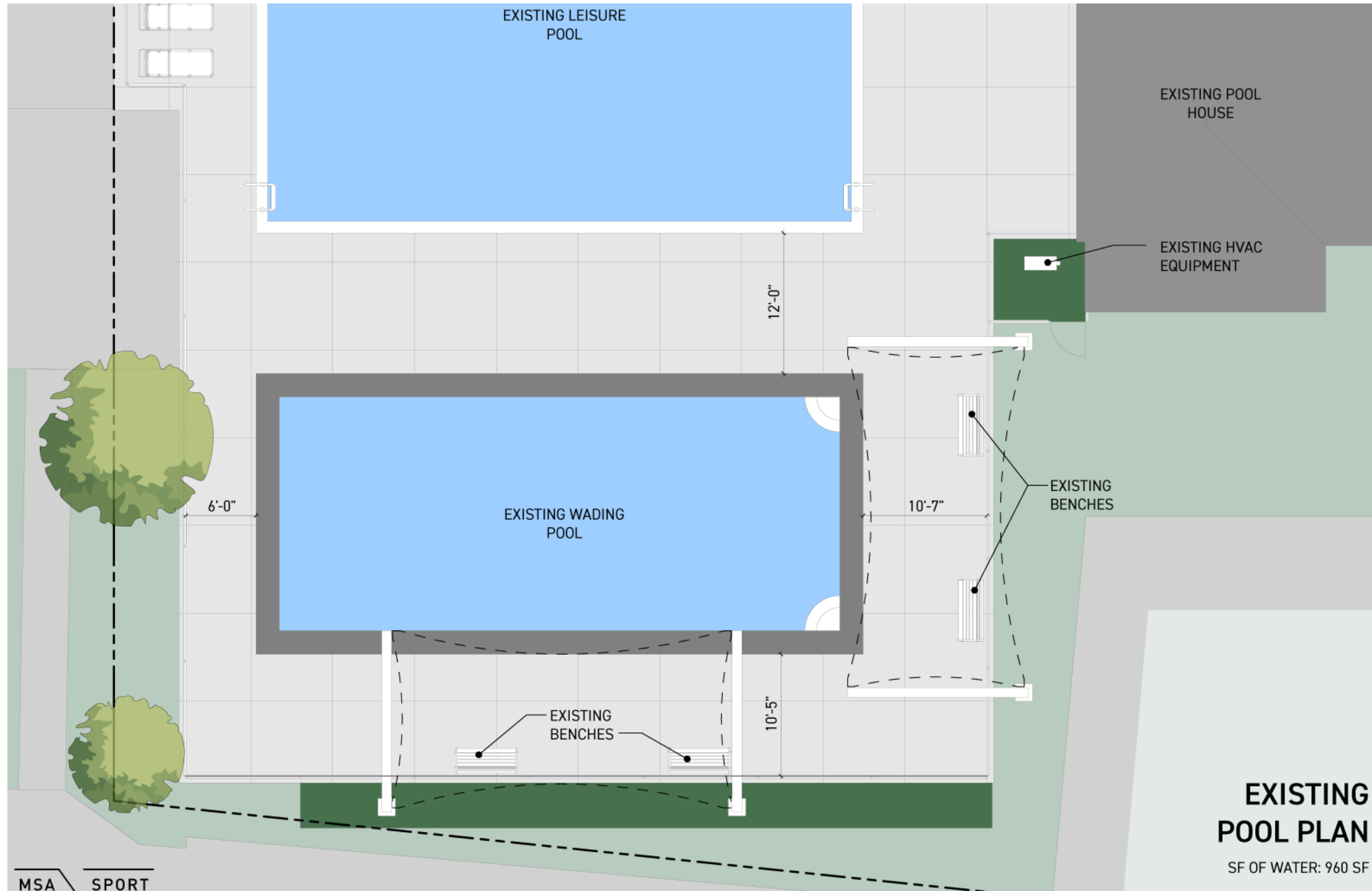
EXISTING OVERALL SITE PLAN

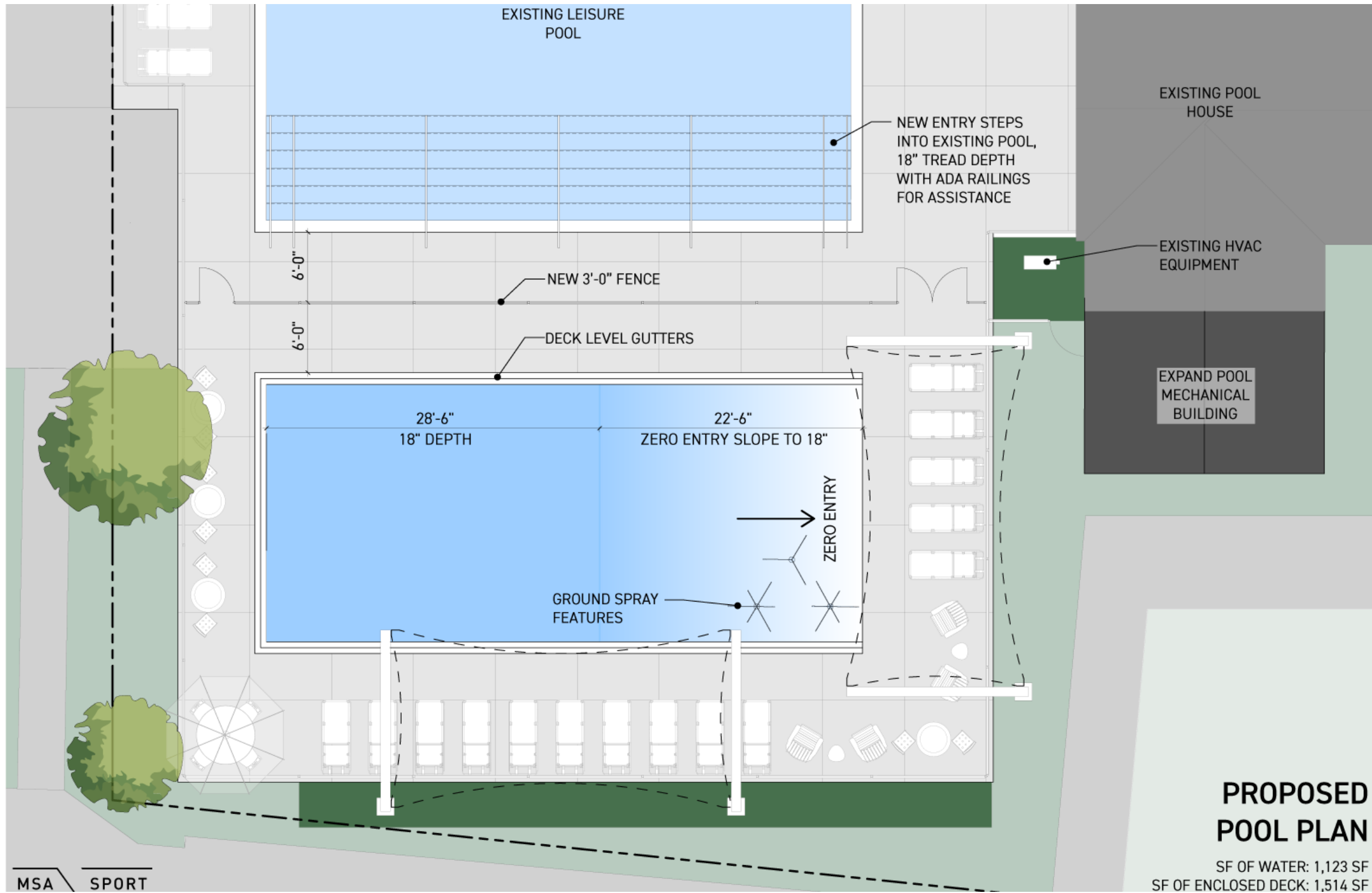
MSA DESIGN

UPPER ARLINGTON | UPPER ARLINGTON DEVON POOL | 09/19/24  
COPYRIGHT MSA DESIGN



**PARKS & REC**  
City of Upper Arlington





# Next Steps

- City Council Presentation – November 4, 2024
- Develop Detail Design Drawings – Winter 2025
- Bid Project – Spring 2025
- Construction Begins – End of 2025 Swim Season
- Construction Complete – Prior to Start of 2026 Swim Season



# Athletic Fields & Turf Update



# Conditions

- **Maintenance Level 1**
  - Northam
- **Maintenance Level 2**
  - 7 fields
- **Maintenace Level 3**
  - 20 fields



# Weather

2023		
Month	Avg Temp (High)	Precipitation
June	80	3.71
July	81	6.4
August	81	4.48
September	80	0.75
October	73	3.11
	Total Precipitation	18.45
90 degree days - 6		

2024		
Month	Avg Temp (High)	Precipitation
June	86	1.26
July	81	1.83
August	81	1.95
September	80	2.5
October	73	0.19
	Total Precipitation	7.73
90 degree days - 31		

\*\* data via Wunderground -- John Glenn Intl Station as of 10/17/2024



# Watering

- **Fields watered**
  - Thompson and Northam
- **Columbus City water vs Wells**
- **Challenges**



# New Equipment and Enhanced Services

- Autonomous mowers
- Autonomous Field Painter
- Force by ABI –
  - infield maintenance equipment
- Sprayer
- Outcross



# Northam



# Plans for 2025

- **Policy**
  - **Maintenace Level 1**
    - Change “dormant” to “off-season”
    - Remove "November" time restriction
- **Program**
- **Infrastructure improvements**
  - Fancyburg Well
- **Equipment Improvements**
  - Tractor
  - Water Reel/Cannon
  - Autonomous Field Mowers



## ATHLETIC FIELD TURF MANAGEMENT POLICY

The Upper Arlington Parks & Recreation Department maintains 183 acres of parkland of which approximately 60 acres are mixed-use turf that primarily function as athletic fields. The Department strives to maintain each sports field for safety, playability and to meet the community's standards by using sustainable maintenance practices that can be best described as Integrated Turf Health Management (ITHM).

The City has determined that Integrated Turf Health Management is the solution that most effectively balances and addresses the two elements of safety concerns: risk of injury and risk of exposure. As such, the long-term goal is to support the physical, social, and environmental health of the Upper Arlington community through sports fields that support safe play and minimize and promote the long-term reduction of the use of synthetic pesticides.

### Integrated Turf Health Management (ITHM) Program

*"Integrated Turf Health Management (ITHM) focuses on the whole turfgrass system, including plants, soils, and beneficial organisms, to provide safe playing surfaces, reduce inputs, and limit environmental impact. ITHM relies on frequent cultural practices, site-specific treatments, and using the least impactful inputs. Each treatment decision seeks to balance the recreational, ecological, horticultural, economic, and sociological consequences. The backbone of the program is monitoring conditions and scouting pests to make data-driven decisions about cultural practices and treatments." -SFMA = Sports Field Managers Association*

A key element of this approach is to equip staff with the necessary tools to achieve our optimal goal for providing playable and safe athletic fields. Unique to the City's program is a site-specific plan, differing levels of maintenance, tools available and criteria for usage. In addition, because this is a new program, Staff will develop a prioritization for implementation of the Integrated Turf Management Program based on available staff time and financial resources. Thus, some fields that qualify for a more intensive level of treatment may receive less treatment due to overall priorities with athletic field maintenance. The Integrated Turf Health Management Program is limited to athletic fields **only**, with a minimal buffer area. The treatments undertaken as part of this management program would not be applied to surrounding park grounds. The following is an outline of the program:

#### Inspections and Assessment

The backbone of the Integrated Turf Health Management Program is a field-specific approach, based on frequent assessments. A knowledgeable and trained member of Staff will spend between approximately four-eight hours every three-four weeks going through an objective, comprehensive, and systematic check list for measurable qualities and quantities that affect a

field's safety and playability. This assessment will result in an overall rating score. The score will govern the maintenance level followed and which of the available tools – some combination of cultural practices (such as reseeding and aeration) and pest management – will be prescribed and utilized for the management of each field.

### **Program Levels and Available Tools**

**All Levels** include a robust maintenance plan focused on the health of the turf, including all cultural practices: bi-weekly mowing to ensure proper height, spring and fall seeding, frequent cultivation of soil (hollow or solid tine aeration, soil fracture, and slit seed), fertilization, and prescriptive rolling, thatch management, leaf control and topdressing.

Because insect and disease populations can spike so quickly, can be extremely damaging to turf, and their effects can result in Rescue Level conditions in a short timeframe, the tools of insecticides and fungicides are available to each of the programs described below. Their use is extremely judicious as prescriptive and preventative when pest pressure dictates.

**Maintenance Level 1** occurs when turf is performing and recuperating at the desired level and playability standards. Attaining and maintaining this level is the ultimate goal for every field in the system. As a result, it incorporates the lowest level of pesticide usage to prescriptive, isolated, spot, or off season treatments.

**Maintenance Level 2** occurs when conditions begin requiring additional treatments to improve turf health. A maximum of three herbicide rounds are available but rounds 1 and 2 are expected to be applied at a reduced acreage and intended to be applied as spot treatments within the fields, not via a blanket application.

**Maintenance Level 3** is a more intensive program warranted by turf conditions. The program has up to three herbicide applications available if conditions necessitate their use.

**Rescue Level** is the most intensive program for fields impacted by a combination of existing conditions, severe weather events, or use under stressful conditions. It is the most intensive of all programs and is intended for short-term use only. All tools listed in the chart below are available. Blanket herbicide applications are recommended initially, however before a treatment is applied the field will be re-inspected (as described in the inspection assessment schedule) to make sure this is necessary. An addition of up to 35% more seed and starter fertilizer is available to help establish grass in bare spots resulting from the absence of undesired herbaceous vegetation.

### **Parameters for Product Usage**

All products proposed for usage will be evaluated by Staff for impacts to safety, exposure, sustainability, and the environment.

One of the tools available in the Integrated Turf Health Management Program are pesticides. The term “pesticide” covers a wide variety of products, including insecticides, herbicides, and fungicides. Public awareness and concern regarding pesticide use has grown over the past few years. However, the selective and careful use of pesticides is desirable and necessary to protect public health and safety, and to maintain athletic facilities in a manner consistent with community values and standards. The Department will continue to evaluate the ITHM program and seek out the safest treatments, including exploring any viable use of organic or natural pesticides.

The Department is committed to the proper use of pesticides which might be stored and applied on City property. Applications and storage of pesticides shall be in accordance with all applicable Ohio Department of Agriculture and the Ohio Environmental Protection Agency laws, regulations, policies and procedures, and in addition the following specific use requirements are utilized by City staff and contractors when pesticides are used on athletic turf:

#### City Use Requirements

1. As described above, an Integrated Turf Health Management philosophy is followed to promote the long-term reduction of the use of synthetic pesticides. Cultural practices, including turf mowing height and frequency, cultivation/aeration, irrigation, mulching, overseeding, and fertilization are used to improve plant health and reduce pest problems. Pest and wear resistant plants are selected when possible.
2. Necessary pesticides are selected for efficacy and the lowest level of toxicity. The safest effective method of application is selected. Products labeled Caution are considered prior to the use of products labeled Warning. In general, products labeled Danger are not used. If circumstances where use of a product labeled Danger was deemed necessary by staff, approval of use must be granted by both the Parks & Recreation Director and the City Manager.
3. Long term storage of pesticides is kept to a minimum. All materials are stored in accordance with label instructions. All such products and application equipment are stored in secure facilities away from the public which are clearly marked as pesticide storage areas.
4. All chemicals will have complete label instructions and will remain in the original containers until mixed or used. Material Safety Data Sheets (MSDS) for pesticides will be kept on file in the Parks & Forestry Division’s shop and are available to anyone who handles such materials or who may be exposed to the product.
5. All pesticide applications are made in strict compliance with the label instructions including selection of pesticides labeled for use in parks and athletic fields. Employees shall be provided necessary personal protection equipment (PPE).
6. All pesticide application records will be recorded, updated, and kept as required by the Ohio Department of Agriculture.

7. Communication – The Department will work with the Community Affairs Office on communication to the general public and park users through various methods such as social media and the City’s website. When Department athletic fields are treated with pesticides the following communication methods, at a minimum, will be implemented
  - a. Treated City property is, at the time of application, temporarily posted with appropriate warning signs at entrance and perimeter areas.
  - b. Scheduled use shall be modified as necessary and users shall be notified in advance.
  - c. A publicly accessible online database will be available including the time and contents of applications.
8. Reentry period will be followed and/or extended (a minimum of 24 hours for pesticides) as an increased safety measure.
9. Department employees responsible for handling and applying pesticides are required to have a valid Pesticide Applicator’s License issued by the Ohio Department of Agriculture or shall be a Trained Serviceman under the direct supervision of a Licensed Applicator, as directed by Ohio Department of Agriculture guidelines.
10. Staff will receive ongoing training and education to ensure that the program, techniques, and products are continually evaluated based on the most up to date research and information, and that any concerns or alternatives are identified.
11. Any contractual services requiring the use of pesticides will conform to this policy.

## **Field Usage**

The Department recognizes the benefits of providing quality athletic programs and community events to our community. In Upper Arlington there is a finite amount of park space and athletic fields to serve these interests. Our responsibility as a Parks & Recreation Department is to balance the public’s needs for field space and the proper amount of use and care the athletic fields require. It is our goal to maximize our field use for play experiences but also to ensure the fields are maintained in a sustainable manner.

The Department recently established a Field Usage Policy that prioritizes usage for recreation level play which results in less wear on fields than from the higher skill level teams. The Department will continue to monitor programming and field usage to achieve the balance between providing a great asset to the community through sports and mixed-use programming and preventing damaging overuse.

## **Infrastructure Improvements**

Based on a recommendation from the 2018 Parks & Recreation Comprehensive Plan, the Department has made athletic field infrastructure a priority. Planned improvements include drainage, regrading fields, adding irrigation and other general improvements. Additional

infrastructure improvements have been evaluated, but currently are not planned. These include synthetic turf fields which would change the use of parks that include community events and leisure use. Replacing grass with sod would be a short-term fix as maintenance practices are still necessary to manage turf health. The time for sod to establish could impact seasonal sports schedules. The Department will continually evaluate infrastructure upgrades as part of this policy and the City's Capital Improvement Program development process.

The Department plans to work systematically through our fields for infrastructure improvements that will reduce conditions that contribute to stress of the turf. As infrastructure improvements are implemented, ongoing turf health practices will evolve, but remain a constant aspect for athletic fields and protection of the investment of capital improvements. The Integrated Turf Health Management Program approach specified in this policy is the best solution to providing quality fields to our residents and players for existing conditions and as infrastructure improvements are implemented.

### **Field Safety and Playability**

While it might seem desirable to live in a pesticide-free world, practical considerations for athletic turf management make that very difficult. Some residents urge the Department to do whatever is necessary to improve park maintenance standards, including the use of more pesticides. Others feel strongly that few if any pesticides should be used regardless of the ramifications. City and community standards for safe and playable athletic turf on our high use fields requires an intensive Integrated Turf Health Management Program. Within that program pesticides are one small tool available for successful management.

There are two elements to safety: injury and exposure. Injury is reduced by having strong, resilient turf. Exposure is reduced by using the lowest effective amount of the safest materials to get the job done at the right time. This plan, as established, effectively and simultaneously addresses both elements of safety. Ultimately, the Department utilizes the various maintenance practices of Integrated Turf Health Management to maximize our safety and playability and minimizes the use of pesticides and exposure all while being mindful, judicious and responsible when it comes to the use of public funding. This is achieved by utilizing best management practices, selecting the least toxic products that will be effective when pesticides must be used, and applying them in adherence to the applicable laws and the City's supplemental use requirements for safety. The Department will continue to explore viable treatments and product selection to support the safety and playability of fields.

### **Policy Review**

City Staff will report annually (fall season) on the scope of implementation, practices and products used, and program outcomes to both the Parks & Recreation Advisory Board and City Council. The update will include any applicable:

1. Soil and field conditions at the beginning of the field season
2. Soil and field conditions at the end of the field season
3. Pesticide, fertilizer, and cultural treatments made during the year
4. Capital improvements made to athletic fields during the year
5. Information regarding any safer and innovative treatments used during the year or under consideration for the following year

The update should also include a comparison from year-to-year of pesticide usage, an analysis of the Integrated Turf Health Management approach, any exploration of new organic or natural products or methods, and a plan for the next year. The update will also include a summary of field usage.

The Integrated Turf Health Management approach is aimed to improve field conditions and through assessments the fields scores should improve and advance to a less intensive maintenance level. If any field remains at the Level 3 or Rescue Level after three years of treatment, the Integrated Turf Health Management Program and this policy will be completely re-evaluated.

APPENDIX A

The Integrated Turf Health Management Program includes the following applications available for each level of the plan. These steps will be evaluated and implemented as needed based on turf conditions. Staff will review this plan and adjust as necessary as the program is evaluated.

Practice	Frequency per year	Level 1	Level 2	Level 3	Rescue Level
Field Inspection/ Assessment	16	√	√	√	√
Mowing	64	√	√	√	√
Cultivation	16	√	√	√	√
Rolling	Determined by condition	Prescriptive	Prescriptive	Prescriptive	Prescriptive
Thatch Management	Determined by condition	Prescriptive	Prescriptive	Prescriptive	Prescriptive
Leaf Control	4	√	√	√	√
Starter Fertilizer and Seed	2	√	√	√	√ + %
Fertilizer	6	√	√	√	√
Topdressing	Determined by need and level	Up to 1	Up to 2	Up to 2	Up to 2
Herbicide	Determined by need and level	Up to 1	Up to 3 2 of which are spot only	Up to 3	Up to 4
Insecticide	Determined by need and level	Prescriptive	Prescriptive	Preventative	Preventative
Fungicide	Determined by need and level	Prescriptive	Prescriptive	Prescriptive	Prescriptive

## § 543.02 ADOPTION OF RULES, VIOLATIONS; UNAUTHORIZED AND PROHIBITED ACTS.

- (A) The following rules and regulations are ordained and established for the conduct in the parkettes, public parks, playgrounds and open space areas of the city.
- (1) No person shall cut, injure, deface, remove or disturb any tree, shrub, building, fence, sign, bench or other structure, apparatus or property; or pick, cut, or remove any shrub, bush or flower; or mark or write upon any building, fence, bench or other structure; **OR DIG; OR USE A METAL DETECTOR.**
  - (2) No person shall make or kindle an open fire except in **BARRELS**, fireplace **S** or picnic **GRILLS** ~~stoves~~ provided **BY THE CITY** for that purpose. **ONLY CITY PROVIDED UNITS ARE PERMITTED.**
  - (3) No abusive, profane or indecent language, or any lewd or obscene conduct, or any other conduct that may annoy others, shall be allowed.
  - (4) (a) No person, except law enforcement officers within the scope of their duties, shall shoot or discharge any firearms of any description, knives, bows and arrows, crossbows, air and gas guns, slingshots, missiles or missile-throwing devices, or other dangerous ordnance or deadly weapon as defined in C.O. ch. 523.
  - (b) No person shall have in his or her possession or ignite or detonate any fireworks, explosive devices **OR MODEL ROCKETS**, as defined in C.O. ch. 523, without having first obtained in writing the permission of the director of parks and recreation **AND FIRE CHIEF.**
  - (5) No person shall sell, offer or solicit for sale any goods or merchandise **OR CONDUCT BUSINESS OR PROVIDE INSTRUCTIONAL SERVICES ON PARK GROUNDS OR PARKING LOTS** without a written permit therefore from the director of parks and recreation. **THE FOLLOWING ARE CONSIDERATIONS FOR GRANTING A PERMIT:**

**(A) PERSON HAS ENTERED A CONTRACT WITH THE CITY FOR SUCH SALES AS A SERVICE TO PATRONS AT FACILITIES SPECIFICALLY DESIGN FOR SUCH PURPOSE, INCLUDING, BUT NOT LIMITED TO POOL CONCESSION STANDS, COMMUNITY CENTER CAFE AND VENDING MACHINES.**

**(B) SELL IS BEING DONE AS PART OF EITHER A CITY HOSTED OR CITY PERMIT APPROVED SPECIAL EVENT. SPECIAL EVENTS FOR THE PURPOSE OF PROMOTING A PRIVATE BUSSINESS SHALL NOT BE APPROVED. SPECIFICALLY, THE SALE OF BEVERGES, PRE-PACKAGED GOODS OR SALES FROM FOOD TRUCKS ARE ONLY PERMITTED ON PARK GROUNDS OR PARKING LOTS IF PART OF A PERMITTED EVENT.**

**(C) INSTRUCTIONAL SERVICES ARE BEING PERFORMED BY A PERSON THAT HAS ENTERED A CONTRACT WITH THE CITY SUCH PURPOSES. THIS SHALL INCLUDE GROUP PROGRAMS AS WELL AS INDIVIDUAL LESSONS.**
  - (6) No person shall use, consume, carry or bring any alcoholic beverage in or upon any parkette, public park, playground or open space areas.
    - (a) This subsection does not apply to intoxicating liquor or beer consumed on the premises of the Amelita Mirolo Barn or within the **EVENT AREAS enclosed area of Northam Park** designated by the city manager in accordance with a city permit issued by the city manager pursuant to C.O. § 131.05.
  - (7) Betting, gambling in any form or maintaining any gambling equipment is prohibited.
  - (8) The playing of baseball, golf and other games, **ACTIVITIES** or contests involving risk of injury to persons or property is prohibited except in areas expressly set aside for such activities, unless otherwise approved by the director of parks and recreation.

- 
- (9) No person shall distribute any advertising, commercial or promotional circulars, cards or written matter, **OR PLACE SIGNS** within any parkette, public park, or playground or open space areas.
  - (10) No **EVENTS**, entertainment or exhibition (**PUBLIC OR PRIVATE**) shall be given in any parkette, public park, playground or open space areas except under the direction or by written permission of the director of parks and recreation.
  - (11) It shall be unlawful for any person to scatter or litter any form of waste material **INCLUDING WRAPPERS, GUM, SEEDS, CIGARETTE BUTTS, ETC.**
  - (12) No motor vehicles of any description **OR OTHER VEHICLE OR DEVICE USED TO TRANSPORT A PERSON THAT IS PROPELLED BY A MOTOR OR ELECTRICITY**, other than municipal service or emergency vehicles, may enter upon a parkette, public park, playground or open space areas, except as authorized by the director of parks and recreation. **THIS SECTION DOES NOT PROHIBIT MOTORIZED WHEELCHAIRS AND ELECTRIC PERSONAL ASSISTIVE MOBILITY DEVICES, WHICH ARE EXCLUDED FROM THE DEFINITION OF VEHICLE IN C.O 301.05**
  - (13) No person or group of persons shall erect, place or cause to be placed, alter or cause to be altered any equipment (**INCLUDING STAKES, INFLATABLE APPARATUS**), facilities or grounds in the city-owned parkette, public park, playground or open space areas without special written permission from the director of parks and recreation.
  - (14) No person or group of persons shall enter, use or remain upon city parkette, public park, playground or open space areas between the hours of 11:00 p.m. to 5:00 a.m. except upon the express authorization of the director of parks and recreation.
    - (a) **ANY PARK LIGHTING SYSTEMS FOR ACTIVE AREAS SUCH AS BALL DIAMONDS AND COURTS SHALL ONLY BE USED WITHIN THESE DESIGNATED PARK HOURS.**
    - (b) **LIGHTS FOR THE MULTI-COURT AT SUNNY 95 PARK ARE LIMITED TO USE UP TO 9:30 PM**
  - (15) No person shall feed, cause to be fed or provide food for any waterfowl on any public property within the boundaries of the city. Exceptions to this will only be granted through city, state and/or federal permitting processes.
    - (a) Signs shall be conspicuously posted to notify individuals that feeding of waterfowl is prohibited on public property within the city.
    - (b) The absence of a sign shall not be an indication that the no feeding of waterfowl policy does not apply to a particular water source.
    - (c) Defacing, tampering, moving, or damaging such signs shall constitute a violation of this chapter in addition to any other penalties that may apply regarding the defacement of public property.
  - (16) No person in a park shall engage in the activities of swimming, wading, boating and/or ice skating in areas or at times which have not been set aside for these purposes by appropriate signage.
    - (a) Signs shall be conspicuously posted to notify individuals that these activities are prohibited on public property within the city.
    - (b) The absence of a sign shall not be an indication that these activities do not apply to a particular water source.
    - (c) Defacing, tampering, moving or damaging such signs shall constitute a violation of this chapter in addition to any other penalties that may apply regarding the defacement of public property.
  - (17) No person in a park shall hunt, capture, take, trap or in any other way abuse, molest, injure, pursue or destroy any animal without the permission of the director other than by fishing.

---

**(a) NO PERSON SHALL RELEASE ANY DOMISTICATED OR EXOTIC FISH OR ANIMALS IN ANY PARK.**

**(b) C.O 519 PROVIDES REGULATIONS REGARDING AMINALS INCLUDNG DOGS IN PARKS**

- (18) Fishing on a catch-and-release only basis is permitted within the City of Upper Arlington. After capture, all fish must be unhooked and returned to the water unharmed. No person shall take or carry away or attempt to take or carry away any fish caught in a public body of water within the City of Upper Arlington.
- (a) Signs shall be conspicuously posted to notify individuals that a water source is catch-and-release fishing only and criminal penalties exist for taking or carrying away, or attempting to take or carry away fish from the water source.
  - (b) The absence of a sign shall not be an indication that this catch and release policy does not apply to a particular water source.
  - (c) Defacing, tampering, moving or damaging such signs shall constitute a violation of this chapter in addition to any other penalties that may apply regarding the defacement of public property.
  - (d) No person in a park shall fish in public park waters in violation of any sign or signs prohibiting fishing or a manner thereof.
- (19) Model rocketry, archery and similar hobbies and/or activities shall be prohibited without the written permission of the director of parks and recreation.
- (20) Smoking and the use of any smoking **OR VAPING** materials or devices within any areas of any parkette, public park, playground, or open space areas is prohibited.
- (B) (1) Except as provided in subsections (B)(2) and (B)(3), whoever violates this section is guilty of violating park rules and regulations, a minor misdemeanor.
- (2) If the offender has previously been convicted of a violation of this section, violating park rules is a misdemeanor of the fourth degree.
  - (3) If a violation of this section constitutes a higher classification of offense under another section of the general offenses code or under a state or federal statute, then the offender may also be prosecuted for said section of the general offense code or state or federal statute. It is the intent of this section that the offender be subject to the full range of penalties provided by said section of the general offense code or state or federal statute.

(Ord. No. 32-2010; Ord. No. 25-2011, 5-9-2011; Ord. No. 40-2013; Ord. No. 27-2019, § 3, 4-22-2019; Ord. No. 74-2022, § 1(Exh. A), 12-5-2022)

# Kiwanis AKTION CLUB



## Tri-Village Aktion Club

Amy Flanagan, President  
Mike Toomey, Kiwanis Advisor

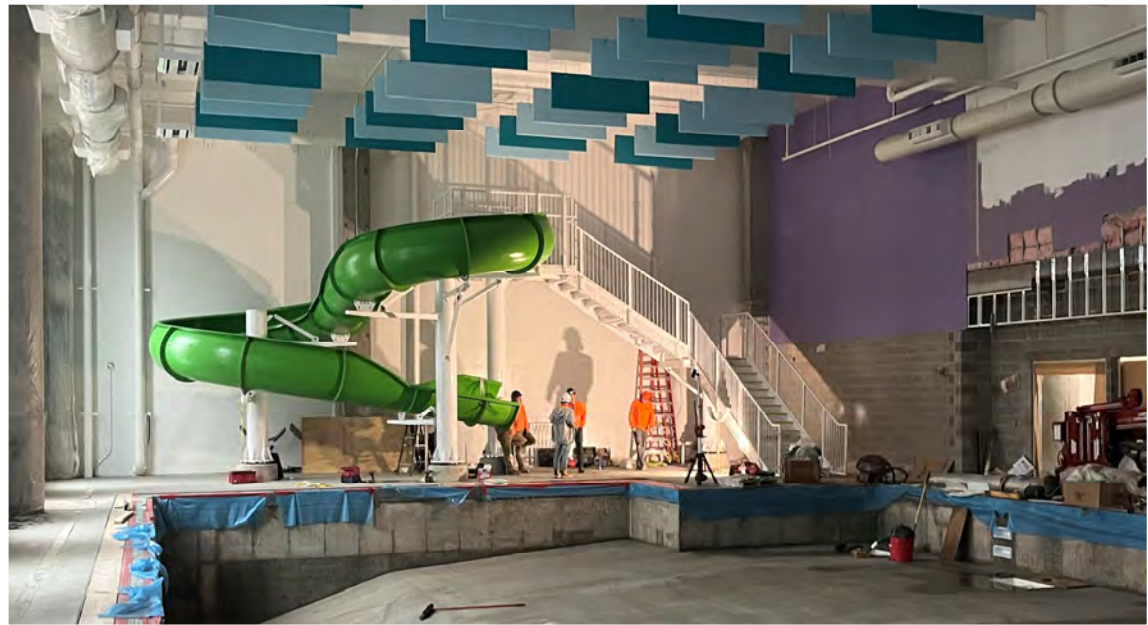
# BOB CRANE COMMUNITY CENTER UPDATE



**PARKS & REC**  
City of Upper Arlington



**PARKS & REC**  
City of Upper Arlington





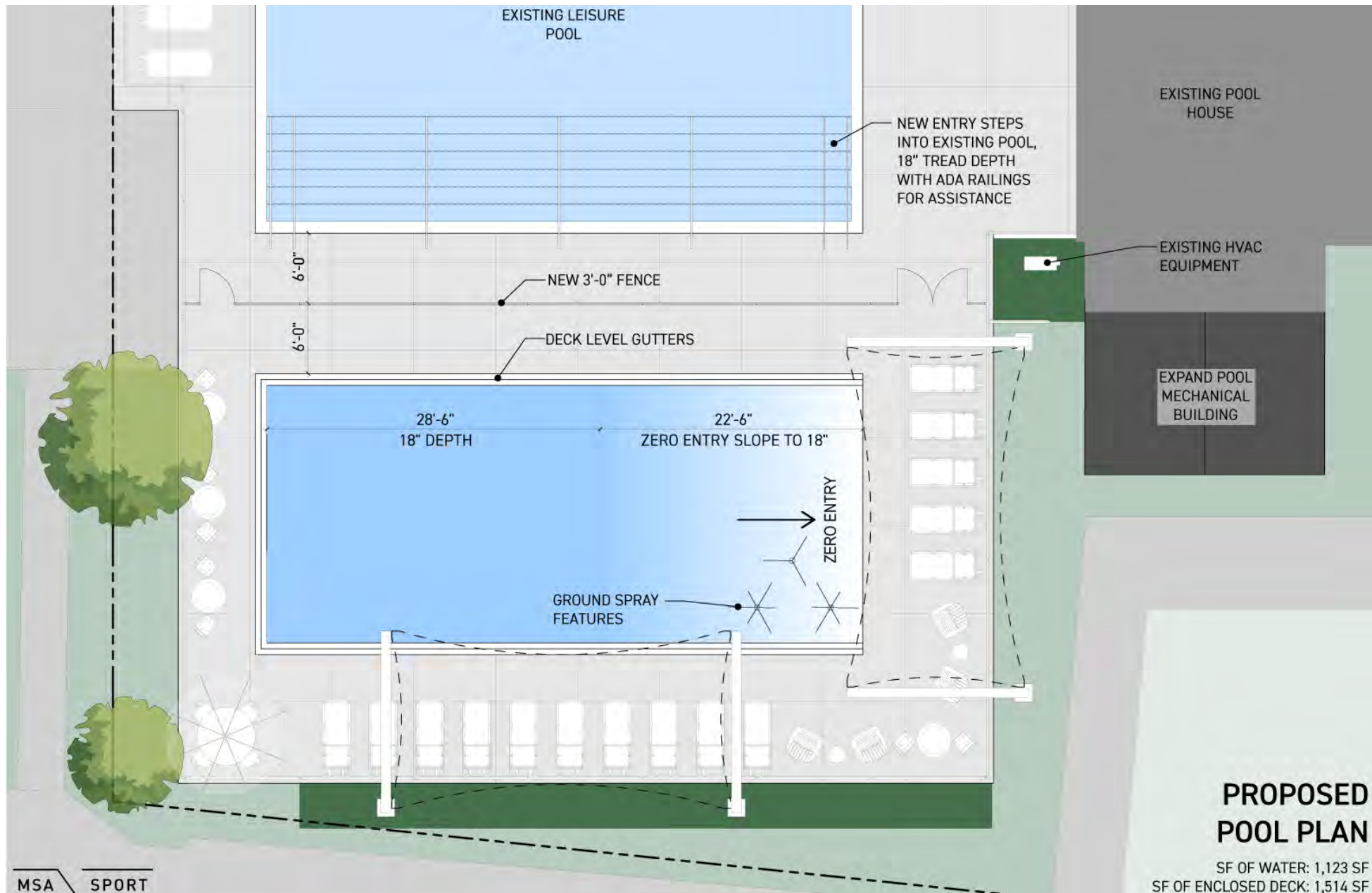
# Capital Improvement Plan



# 2025 Capital Projects

- Fancyburg Park Master Plan
- Sunny 95 Court Resurfacing
- Devon Toddler Pool
- Fancyburg Park Service Yard Design
- Northam East Athletic Fields Design
- Smith Road and Miller Bridge Replacement Design
- Community Center Call for Artists







# **Fancyburg Park Schedule**

**Early Winter 2025 – Site Survey, Concept Development**

**Late Winter 2025 – Community Open House / Survey**

**Spring 2025 – Finalize Master Plan**

**June 2025 – Final Master Plan Presented to PRAB & Council**

**Summer 2025 – Service Yard Detailed Design**

**Late Fall 2025 – Service Yard Construction Bid**

**2026 – Service Yard Construction**



# Park Focused Improvements

**2025 Devon Pool**

**2026 Northam Park**

**2027 Fancyburg Park**

**2028 Fancyburg Park  
Northwest Kiwanis Park**

**2029 Thompson Park**

**2030 Reed Road Park**



# Five Year CIP Plan

## 2026

- Northam East Athletic Fields
- Smith & Miller Park Bridge Replacements
- Fancyburg Park Service Yard
- Community Center Public Art Installation

## 2027

- Fancyburg Park Phase I Improvements

## 2028

- Fancyburg Park Phase II Improvements
- Fancyburg Public Art Installation
- Northwest Kiwanis Park Improvements  
Playground, Paths

## 2029

- Thompson Park  
North Shelter, Outdoor Fitness, Paths,  
Boardwalk

## 2030

- Reed Road Park  
Athletic Fields, Paths, Boulder Area,  
Water Park Repairs



# Fee Structure



# Season Pass Fee Structure

2024 Aquatics & Tennis
Individual (Age 3-59)
Household of 2
Household of 3
Household of 4
Add-on
Caregiver Add On
Senior (Age 60+)
Senior Couple
Daily Admission

2025 Bob Crane Community Center	Resident
Individual (Age 3-59)	35
Senior (Age 60+)	22
Each Additional Person	22

## Membership Structure

- Simple Structure
  - Initial rate for first household member
  - One rate for each additional member
- Discount for Seniors
- Favorable for Residents
  - 50% mark-up for non-residents



# Aquatics 2024 Structure & Fees

2024 Season Pass	Resident	Cost per additional person	Cost per person
Individual (Age 3-59)	142	142	142
Household of 2	203	61	101.5
Household of 3	270	67	90
Household of 4	320	50	80
Each Additional	37	37	
Caregiver Add On	74	74	
Senior (Age 60+)	118	118	118
Senior Couple	166	48	83



# 2025 Aquatics & Tennis Fees

Aquatics	Resident	Non-Resident
Individual (Age 3-59)	146	219
Senior (Age 60+)	121	180
Each Additional Person	60	90

Tennis	Resident	Non-Resident
Individual (Age 3-59)	286	429
Senior (Age 60+)	255	383
Each Additional Person	100	150
Junior Member	80	120

