



Tuesday, August 29 2023
6:30 pm
Council Chambers

CALL TO ORDER

Meeting was called to order by Chair Christ at 6:32 pm

Members Present:

Sean Caine
 Lindsey Christ
 Mary Duchi
 Brian Noble

Caroline O'Donnell
 Craig Smith
 Allison Thomas

Staff Present:

Parks & Recreation Director Debbie McLaughlin
 Administrative Assistant Brooke Bowman

Other Staff Present: Parks Development & Arts Superintendent Jeff Anderson, Recreation Superintendent Matt Leber, Community Center Manager T.J. Putnam

Guests Present: None

APPROVAL OF MEETING MINUTES

Motion to approve minutes of the Parks & Recreation Advisory Board from the May 10, 2023 meeting.

Motioned: Duchi

Seconded: Noble

Board Discussion: None

Voting Aye: Caine, Christ, Duchi, Noble, O'Donnell, Smith, Thomas

Abstain: None

Motion Passed

Motion to approve minutes of the Parks & Recreation Advisory Board from the July 17, 2023 meeting.

Motioned: Smith

Seconded: Noble

Board Discussion: None

Voting Aye: Caine, Christ, Duchi, Noble, O'Donnell, Smith, Thomas

Abstain: None

Motion Passed

ACTION/DISCUSSION ITEMS- OLD BUSINESS

AGENDA ITEM- Northam Park Open Space Recommendation

Director Debbie McLaughlin reviewed the last meetings discussion on the Northam Park Open Space. Parks Development & Arts Superintendent Jeff Anderson proceeded with the presentation on the Northam Park Open Space use study that reviews the process, the feedback and the recommendation moving forward (Attached hereto and incorporated in as exhibit A). Mr. Anderson began with an overview and schedule of the public engagement process. The recommendation includes:

- Enhancing connection between Tremont Elementary school and the park,
- Provide additional open space,
- Expand the buffer between Tremont Pool and the tennis complex
- Improve the park loop path for the casual park use
- Look for ways to provide shelter in key locations to meet user needs
- Provide pickleball courts in the near future to meet ongoing demand
- Continue to explore future opportunities to provide additional pickleball courts in other parks

In addition to the recommendations an alternate could be placing two hard tennis courts if Council prefers an option from the six pickleball courts.

Staff is working with OHM Advisors on construction bid documents to bid in October. Staff projects the bid award ordinance to be reviewed by City Council November 13 and 20th tentatively. Construction beginning early 2024 focusing on the building with intent to leave courts open through end of July.

In response to Chair Christ's invitation to speak, the following speakers came forward:

- Todd Jacquith stated six pickleball courts is not enough with Fancyburg having eight courts and over capacity, there is room at Fancyburg to add four courts where the city purchased the house. Thompson is also an option for pickleball courts. Don't replace the buildings and do 12 clay courts, this leaves \$2 million to do other things at other parks.
- Wayne Wookey shared two major issues, the noise of pickleball and any research on the noise level and what the acoustic level would be with 6 pickleball courts. Sound pollution is a big complaint with pickleball, worthwhile to investigate as part of the process. The other issue is the timing of the location of a pickleball complex at Thompson or Fancyburg could solve a lot of problems. Pickleball courts at Northam aren't going to solve the need for pickleball.

Following the speakers the Board members had the following discussions:

- Has a study of the unused green spaces in the parks been conducted – staff discussed our park system with parks dedicated to naturalized areas and some nature areas within larger parks
- Clarification on the recommendation and the fence line for tennis
- The service building and how old is it and reasoning for building a new one – current building is below grade, frequent flooding, plumbing issues in restrooms
- How much additional space is for storage in the building – consistent with existing building and shed located by court 12.
- Noise concern of pickleball – Northam Park location of pickle ball courts is over 500 feet away from homes
- The Base bid and alternates – alternates include the 9th clay tennis court, shade structures and pickle ball courts.

A **MOTION** was made by Board member Smith to support the Northam Park Open Space recommendation plan as proposed by the Parks and Recreation Staff.

Motioned: Smith

Board Discussion: Motion was amended after discussion to state:

A **MOTION** to support the Northam Park Open Space recommendation plan as proposed by the Parks and Recreation Staff with pickleball courts and the asphalt tennis courts as an alternate consideration.

Seconded: Caine

Voting Aye: Caine, Christ, Noble, O'Donnell, Smith, Thomas

Voting Nay: Duchi

Motion Passed

ACTION/DISCUSSION ITEMS- NEW BUSINESS

AGENDA ITEM- Bob Crane Community Center Update

Director McLaughlin shared T.J. Putnam has been hired as the Community Center Manager. Parks Development & Arts Superintendent Jeff Anderson proceeded with the presentation on the Bob Crane Community Center sharing updates on the process and new construction pictures (Attached hereto and incorporated in as exhibit B). Construction is on schedule to have the structure topped out in February of 2024.

In response to Board Member Christ's invitation to speak, the following speakers came forward:

- Seamus Martin stated the issue at hand is what the people were asked, what was on the voter ballot and now what's been committed. The City has now committed to spend over \$106 million dollars on the community center, no tax payers are aware of this and many will be outraged.

Director McLaughlin clarified information from the speaker that although the overall project cost increased the amount of bonded funds that the city is using is within the ordinance that voters passed. Additional funding was available through city reserves, private donations and some of the tenant space.

AGENDA ITEM- Labor Day Arts Festival Overview

Parks Development & Arts Superintendent Jeff Anderson invited Board members to attend the Labor Day Arts Festival and provided event maps. Mr. Anderson also shared the new layout and event changes for this year's event including extended hours. Volunteers are still needed especially for event clean up.

AGENDA ITEM- Directors Report

Director McLaughlin gave updates on the following items:

- Working with Police Department about motorized vehicles in the parks
- 2 playgrounds, Fancyburg and Northam have slides that need replaced
- No construction companies bid on the waterline for Thompson Park

AGENDA ITEM- Board Member Comments and Setting Future Agenda Items

October meeting will include PLAY UA update, summer recreation recap, new turf specialist introduction and turf plan update and was rescheduled to October 25.

ADJOURNMENT

Motioned: Duchi

Seconded: Thomas

Voting Aye: Caine, Christ, Duchi, Noble, O'Donnell, Smith, Thomas

Abstain: None

Motion Passed

Meeting was adjourned at 7:58 pm

Chairperson

Parks and Recreation Advisory Board Meeting Minutes
August 29, 2023

ATTEST: _____
Secretary

Northam Park Use Study

Parks & Recreation Advisory Board Update

August 29, 2023



PARKS & REC
City of Upper Arlington

Community Engagement Process



Schedule

- **Evaluation System Introduced at PRAB Meeting - July 17**
- **Online Community Engagement - July 18 to August 18**
 - **About 50 emails received**
- **Parks & Rec. Staff at Community Events**
 - **Summer Celebration - July 20**
 - **Northam Park Playground and Tremont Pool - July 21**
 - **Farmers Market - July 26**
 - **National Night Out - August 1**



Communication

- Updates on Northam improvements webpage
- Postcard, mailed to 540 homes around Northam Park, and distributed at libraries, pools, etc.
- Flyer Connection (UA Schools resource)
- Sign at Park Service Building
- City Insight and Activity Link e-news updates
- Blogs – July 7, 26, August 23



Next Steps

- PRAB Update - August 29 (Tonight)
- Project Bid Award Ordinance reviewed by City Council
 - November 13 and 20 (Tentative)

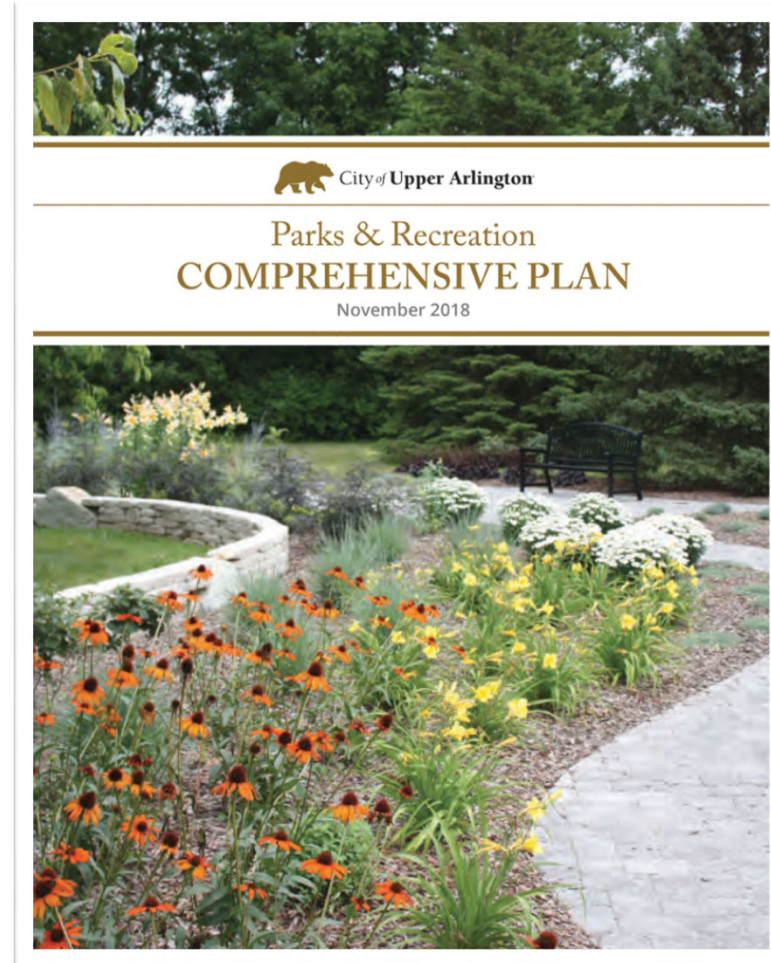


Evaluation Process



Potential Uses (Based on 2018 Comprehensive Plan)

- Asphalt Tennis Courts
- Basketball
- Dog Park
- Open Shelter
- Pickleball Courts
- Playground
- Sand Volleyball
- Skate Park



Weighted Evaluation Criteria

Weighted Evaluation Criteria	Scoring Weight
Does the use fit within the available space?	8
Is the location appropriate to the proposed use?	8
Does the use enhance the offering of other existing uses in the park?	8
Does the use support the goals of the 2018 Comprehensive Plan?	6
Does the use fulfill an unmet need from the 2018 Comprehensive Plan?	6
Is the use better accommodated in Northam than other City parks?	6
Does use address inquiries received since the Comprehensive Plan was finalized?	4
Is there a reasonable maintenance and operation impact?	2
Is the use consistent with national benchmarking?	2
Available Scoring Weight	50

Amenity Evaluation	Scoring Value
Yes	2
Maybe	1
No	0

Available Scoring Weight (50) x Amenity Evaluation (2) = 100 Possible Points



Open Shelter

	Base Score		Factor	=	Weighted Score	
Does the use fit within the available space?	2	x	8	=	16	Yes, a 30'x30' shelter can be accommodated with room left for other potential uses, shelter size is similar to those in Burbank and Northwest Kiwanis Parks
Is the location appropriate to the proposed use?	2	x	8	=	16	Yes, location is centrally located in the park with reasonable access to the parking area
Does the use enhance the offerings of other existing uses in the park?	2	x	8	=	16	Yes, the shelter would serve pool, tennis and athletic users in addition to casual park use
Does the use support the goals of the 2018 Comprehensive Plan?	2	x	6	=	12	Yes, Goal 2.3 specifically recommends the addition of a park shelter near the tennis complex
Does the use fulfill an unmet need from the 2018 Comprehensive Plan?	2	x	6	=	12	Yes, the 2018 Comprehensive Plan Level of Service Study recommends 1 to 2 additional shelters
Is the use better accommodated in Northam than other City parks?	2	x	6	=	12	Yes, several other parks already feature an open or enclosed shelter
Does use address inquiries received since the Comprehensive Plan was finalized?	2	x	4	=	8	Yes, during the 2020 Northam Park Vision Plan process, several residents requested an open air shelter
Is there a reasonable maintenance and operation impact?	2	x	2	=	4	Yes, there will be minimal operating and maintenance cost
Is the use consistent with national benchmarking?	2	x	2	=	4	Yes, 2 shelters would be needed to meet national benchmarking standard of 1/3,500 residents
Total Score:					100	

2 = Yes, 1 = Maybe, 0 = No



Pickleball Courts

	Base Score		Factor	=	Weighted Score	
Does the use fit within the available space?	2	x	8	=	16	Yes, 7 courts would require ±15,000 SF and would still leave room for an open shelter
Is the location appropriate to the proposed use?	2	x	8	=	16	Yes, area provides sufficient space for the proposed use, courts would be more than 600' from the nearest residence
Does the use enhance the offerings of other existing uses in the park?	1	x	8	=	8	Use would provide another option for paddle sport participants, some noise will be noticeable at adjacent uses
Does the use support the goals of the 2018 Comprehensive Plan?	2	x	6	=	12	Yes, Goal 1.2 recommends pickleball as a desired amenity, 2.4 recommends addressing needs based on the growth
Does the use fulfill an unmet need from the 2018 Comprehensive Plan?	2	x	6	=	12	Yes, the 2018 Comprehensive Plan Level of Service Study indicates a need for 4 pickleball courts
Is the use better accommodated in Northam than other City parks?	2	x	6	=	12	Yes, Northam provides more than 600' of separation from adjacent residences to minimize noise impacts, this is the greatest distance of any potential park locations
Does use address inquiries received since the Comprehensive Plan was finalized?	2	x	4	=	8	Yes, the City has received consistent inquiries since 2018 requesting dedicated pickleball courts
Is there a reasonable maintenance and operation impact?	2	x	2	=	4	Yes, there will be minimal operating and maintenance cost, color coat will need maintenance every few years.
Is the use consistent with national benchmarking?	2	x	2	=	4	Yes, 4 courts would be needed to meet national benchmarking standards of 1/10,000 residents
Total Score:					92	



Asphalt Tennis Courts

	Base Score		Factor	=	Weighted Score	
Does the use fit within the available space?	2	x	8	=	16	Yes, 2 courts would require ±13,000 SF and would still leave room for an open shelter
Is the location appropriate to the proposed use?	2	x	8	=	16	Yes, area is easily accessible and provides sufficient space. Consistent with current use.
Does the use enhance the offerings of other existing uses in the park?	2	x	8	=	16	8 or 9 courts meet needs in Northam, but additional courts could open up opportunities elsewhere and may help address peak demand at Northam
Does the use support the goals of the 2018 Comprehensive Plan?	1	x	6	=	6	Though not specifically addressed, the use generally supports 2.4 maximizing the use of City sport facilities
Does the use fulfill an unmet need from the 2018 Comprehensive Plan?	0	x	6	=	0	No, the 2018 Comprehensive Plan Level of Service Study does not show a need for additional tennis courts
Is the use better accommodated in Northam than other City parks?	1	x	6	=	6	There are not many opportunities in other parks to provide additional tennis courts without changing uses
Does use address inquiries received since the Comprehensive Plan was finalized?	1	x	4	=	4	Desire for additional hard court tennis expressed during 2023 Conceptual Design due to pickleball use, but no prior inquiries
Is there a reasonable maintenance and operation impact?	2	x	2	=	4	Yes, there will be minimal operating and maintenance cost, color coat will need maintenance every few years.
Is the use consistent with national benchmarking?	0	x	2	=	0	No, current Level of Service exceeds both national benchmarking standards of 1/5,000 residents
Total Score:					68	

2 = Yes, 1 = Maybe, 0 = No

*Note: If asphalt tennis courts are installed at Northam Park, staff would likely recommend that some tennis courts in other parks be converted to dedicated pickleball courts to meet community demand.



Other Uses

- Basketball - 52
- Sand Volleyball - 48
- Playground - 48
- Skate Park - 40
- Dog Park - 22



Community Feedback



Feedback Received

- Limited feedback on evaluation questions, weights or staff scoring
- Concern expressed about providing large open shelter and open space in an area with limited visibility
- Recommendations for other potential uses
 - Ping Pong Table
 - Diving Well
 - Sprayground
 - Outdoor Stage
 - BMX Course
 - Beer Garden



Feedback Received

- **Majority of feedback focused on pickleball, tennis and open space**
 - **Importance of green space and plantings**
 - **Importance of maintaining the neighborhood character of the park**
 - **Lots of support for an open shelter, but concern about character and location**
 - **Desire for a high quality pickleball complex with several courts**
 - **Desire to have pickleball courts constructed in the near future**
 - **Desire for a tennis hub with clay and asphalt**



Assessment



Key Considerations

- **Unique character of this specific space**
- **Potential future park development opportunities**
- **Mixed use character of Upper Arlington Parks and space limitations**
 - **Typical approach has been to provide smaller scale features in various parks instead of a single large venue**

Examples: 3 Outdoor Pool Locations vs. 1 Large Aquatic Center
Multi-use Athletic Field Areas vs. Sport Complex

- **This approach brings the amenity to the neighbors in various parts of the community without overwhelming a single location**



Recommendations

- Enhance the connection between Tremont Elementary and Park
- Provide additional open space
- Expand the buffer between Tremont Pool and the Tennis Complex
- Improve the park loop path for casual park use
- Look for ways to provide shelter in key locations to meet user needs
- Provide pickleball courts in the near future to meet ongoing demand
- Continue to explore future opportunities to provide additional pickleball courts in other parks



Alternate Consideration

Tennis Courts at Fancyburg or Thompson converted to dedicated pickleball

Pros

- Limits the number of different uses at Northam Park
- Asphalt tennis could compliment clay tennis

Cons

- There is not an overall immediate need for additional tennis courts
- Longer delay to providing dedicated pickleball courts
- Pickleball complex in other parks may need to be larger to accommodate overall demand
- Appropriate size, location and design of a larger complex would need additional study



Design and Construction Schedule

- **Bid Advertisement - October 4, 2023**
- **Bid Opening - October 23, 2023**
- **City Council - November 13 & November 20, 2023**
- **Notice to Proceed - January 8, 2024**
- **Building Demolition - Winter 2024**
- **Tennis Court Demolition - August 2024**
- **Project Complete - Winter 2025**



Questions?



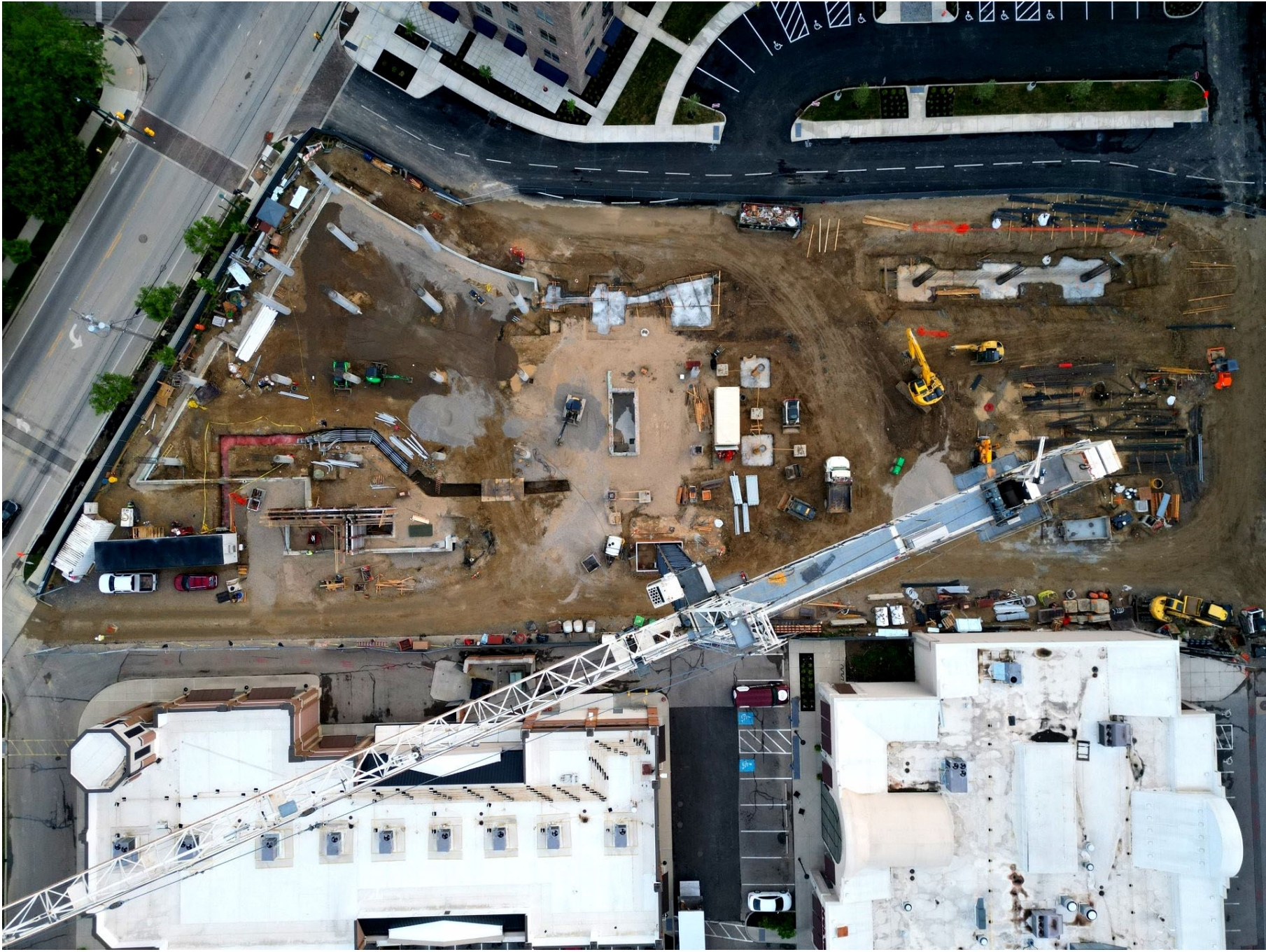
PARKS & REC
City of Upper Arlington

Bob Crane Community Center

Parks & Recreation Advisory Board Construction Update

August 29, 2023





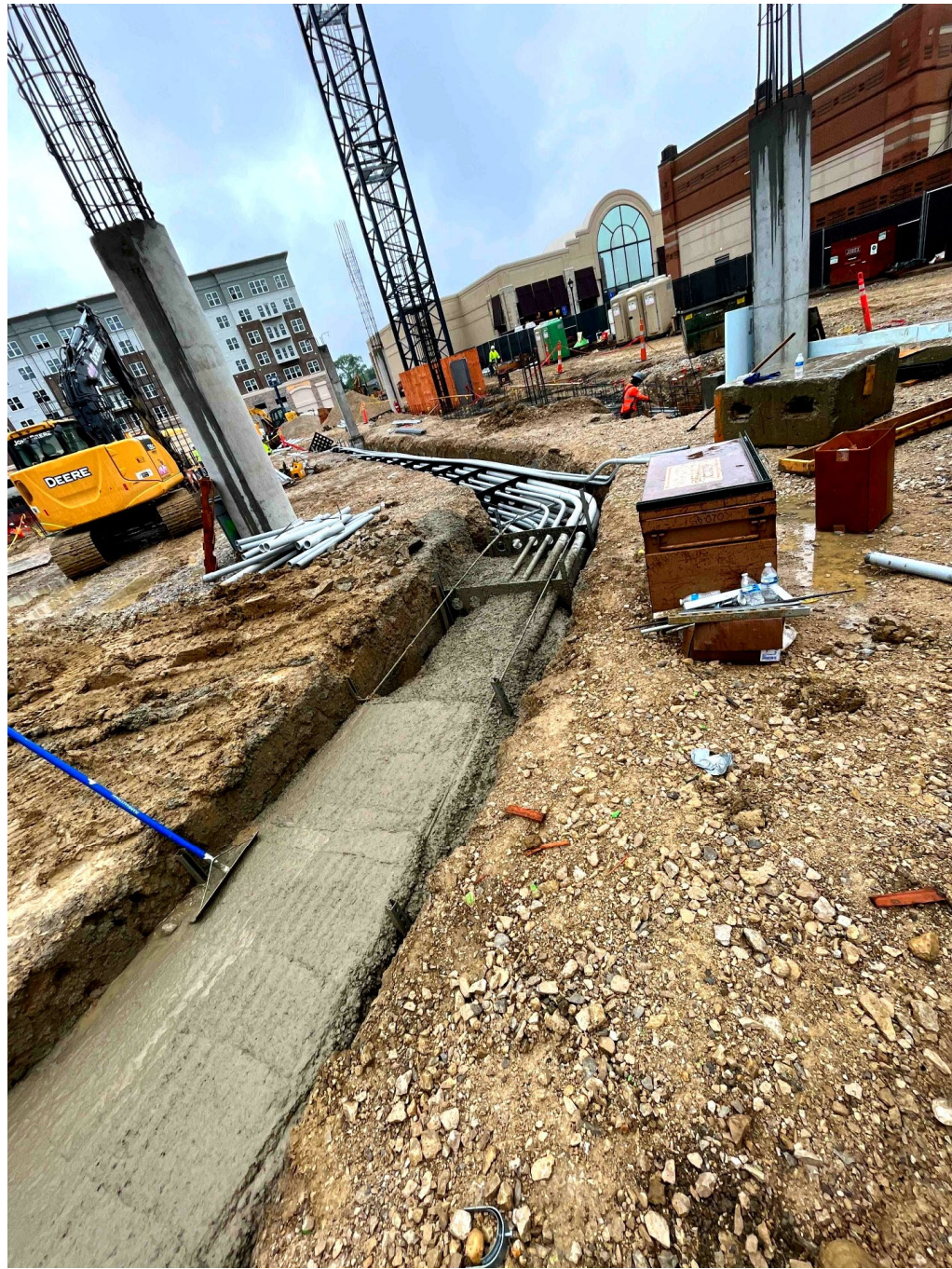
PARKS & REC
City of Upper Arlington



PARKS & REC
City of Upper Arlington



PARKS & REC
City of Upper Arlington



PARKS & REC
City of Upper Arlington



PARKS & REC
City of Upper Arlington



PARKS & REC
City of Upper Arlington



PARKS & REC
City of Upper Arlington

Labor Day Arts Festival

Parks & Recreation Advisory Board Update

August 29, 2023



PARKS & REC
City of Upper Arlington

LABOR DAY ARTS FESTIVAL



PARKS & REC
City of Upper Arlington

HANDICAP & ACCESSIBILITY
PARKING AT TREMONT CENTER

TREMONT RD

FOOD TRUCKS

ART VALET

SHUTTLE STOP



Main Performance Lineup

- 10:30 am**
Whirlybirds
- Noon**
Roots Society
- 1:30 pm**
Topher James and Biscuit Brigade
- 3 pm**
Andy Shaw Band
- 4:30 pm**
The British Invasion



PARKS & REC
City of Upper Arlington

Help keep the Festival green! Use our SWACO containers.