



TUESDAY NOVEMBER 25, 2025 7:30 A.M.
BOB CRANE COMMUNITY CENTER - BOARD ROOM
3200 TREMONT RD.

- 1) Welcome: call to order and roll call – Chair Kim Landsbergen / Staff Veronica Trommer
- 2) Approval of Minutes from October 7, 2025 – Chair Kim Landsbergen
- 3) Public Attendance - Chair Kim Landsbergen
- 4) Discussion items – Chair Kim Landsbergen and Staff Sam Simmons
 - a) Congratulations Commissioner Oldham
 - b) Tree Canopy Assessment – Update from Davey Resource Group
 - c) Education/Outreach
- 5) Updates from staff: - Staff Sam Simmons
 - a) General/Operational Forestry Updates
 - b) Contracts
 - c) Park Updates
 - d) CIP/Development
- 6) Friends of UA Parks Update
- 7) Horticulture Update – Libby Roach
- 8) Future meetings – Topics and location
- 9) Adjournment – Chair Kim Landsbergen

Next Meeting –February 3, 2026

THE PUBLIC IS CORDIALLY INVITED TO ATTEND ALL COMMISSION MEETINGS.

Upon request to the City Clerk’s office, special accommodations for people with disabilities (i.e., interpreting services, audio recording, etc.) will be arranged for any City meetings open to the public. Requests for special accommodations should be submitted at least 72 hours in advance.

OCTOBER 7, 2025, 7:30 A.M.
THE BOB CRANE COMMUNITY CENTER
3200 TREMONT RD

The City Tree Commission met at the board room of the Bob Crane Community Center and was called to order at 7:30 AM by Vice-Chair J.P. Ratajczak

1. Welcome: Call to order and roll call - Chair/Veronica Trommer

MEMBERS PRESENT:

<u> </u> Chair Kim Landsbergen	<u> X </u> Vice-Chair J.P. Ratajczak
<u> X </u> Kathy Duke	<u> X </u> Laura Oldham
<u> X </u> Scott Zanon	<u> X </u> Laura Fay
<u> X </u> Blythe Price	

ALSO PRESENT:

Associate member Karla Gengler-Nowak, Director Debbie McLaughlin, Park Development & Arts Superintendent Jeff Anderson, Parks & Forestry Superintendent Samantha Simmons, Forestry Supervisor Matt Stewart, Administrative Assistant Veronica Trommer and Forestry Specialists Corey Oancea and Bri Reading.

MEMBERS ABSENT: Chair Kim Landsbergen and associate member Libby Roach

Chair Kim Landsbergen' s excused absence

Note: Chair Landsbergen was able to connect virtually for a portion of the meeting including Davey Resource Group presentation- but in accordance with Ohio Revised Code she was not present as a commissioner.

Motioned: J.P.

First: Laura Oldham

Second: Scott Zanon

Motion passed

2. Approval of Minutes

Motion to approve the minutes of the Tree Commission meeting for August 5, 2025

Motioned: J.P.

First: Kathy
Second: Blythe
Motion passed

3. Public participation

Deb Marsh – discussion about upgrade/refresh Tree Treks and brochures

4. Discussion items

a) Tree Canopy Assessment - Update from Davey Resource Group.

- The change overtime when compared with prior data (2011 and 2021) showed that overall, there were canopy gains observed, particularly in residential areas.
- Current canopy coverage is approximately 41% citywide
- Annual environmental benefits: Estimated at \$2.3 million, including \$1.2 million in stormwater benefits and 38,000 tons of carbon sequestration.
- Completion of priority planting analysis by late November and final presentation planned for December, including submission to City Council and Parks & Recreation Department.
- Commission members discussed and asked questions.

b) Leaf Management - <https://www.upperarlingtonoh.gov/306/Leaf-Collection>

- Discussed the value of leaf mulching vs. collection. Planning to improve website and social media messaging promoting the importance of nutrient recycling.
- Proposal to enhance City website messaging to encourage nutrient recycling through mulching.
- Suggestion for future social media campaign emphasizing environmental benefits.

c) Westover Oak –

- The Oak is regarded as one of the community’s noble legacy trees.
- Provide public communication/messaging explaining the reason for the eventual removal of the tree.

d) The city plans to plant multiple new trees in the same area to replace canopy that will be lost from the prominent oak’s removal.

d.) Education Outreach/Review –

- FLOW is distributing 300 free trees to residents, with emphasis on planting in low-canopy neighborhoods.
- Greenfield Elementary is hosting a tree-planting event with 2nd and 3rd graders; staff are coordinating logistics to support the activity.
- A community suggestion proposed adopting an “Arlington Bug” (e.g., dragonfly) as a fun symbol for biodiversity education.

5. Updates from staff

a) General/Operational Forestry Updates

- Sam and Matt completed the ISA Prescription Training Course. The class started in the Florida Chapter and ISA has been adding classes to other states to try and standardize pruning techniques with emphasis on structural pruning for long-term tree health throughout the industry. The course was held at The Barn in Sunny 95 Park.

b) Contracts

- The tree removal contract is complete and stump grinding will begin next week.
- Fall planting is underway. We will be planting 324 trees this fall.

6. Friends of UA Parks – Karla Gengler-Nowak

FOUAP will be meeting this Saturday at Fancyburg, November at Smith Park, and in December at Northwest Kiwanis Park.

7. Future meetings – Topics and location

- Scott will try to get reservation for OSU Golf Course, but they don’t open until 8 a.m.
- We may move the December meeting to Tuesday November 25th to go over the Tree Canopy Assessment.

8. Adjournment

Motioned: J.P.

First: Scott

Second: Laura

Meeting adjourned: 9:06 a.m.

ATTEST:

Secretary Veronica Trommer

Vice-Chair J.P. Ratajczak

* * *

The next Commission meeting is scheduled for December 2nd at 7:30 a.m.



UPPER ARLINGTON, OH

TREE CANOPY ASSESSMENT

City Tree Commission
October 7, 2025

AGENDA

Introduction

Scope of Work

Preliminary Results



- Established in 1880 and headquartered in Kent, Ohio, Davey is in the top 10 largest employee-owned companies in the United States.
- DRG was formed in 1992 as a division of The Davey Tree Expert Company.
- Twenty-four regional brick and mortar offices with specialized mobile staff.
- DRG is the environmental consulting branch of the Davey Tree Expert Company
 - Utility Consulting
 - Urban Forestry
 - GIS Services
 - Software
 - Ecological Services

Company Background



SCOPE OF WORK

Scope of Work

- Land Cover Mapping (**Completed**)
- Tree Canopy Change Detection (**Completed**)
- Ecosystem Services (**Completed**)
- Tree Planting Map/Priority Planting Area (**In Progress**)
- TreeKeeper Canopy Software (**Not Started**)
- Report and Factsheet (**Not Started**)
- Presentation (**In Progress**)

Tree Canopy and Land Cover Mapping

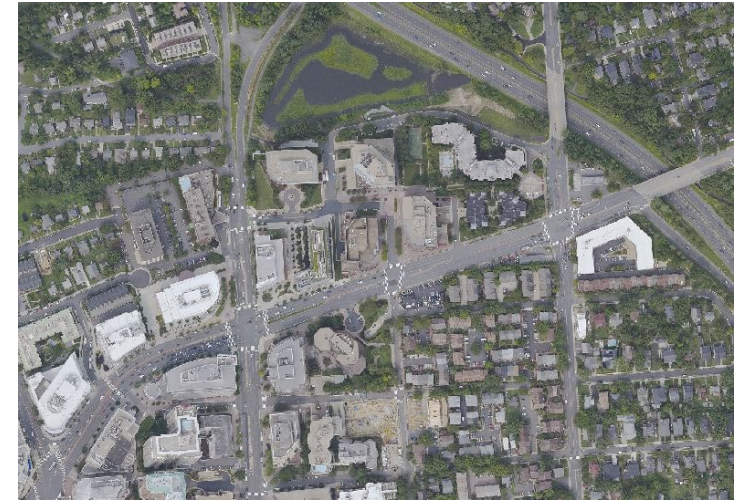
Source Data

Primary goals:

- To establish **baseline data** on the extent and function of the existing urban forest.
- **Compare** current canopy data to levels seen in the past.
- Provide a resource to guide **future** community forest management efforts.

GIS study of five land cover classes (at a minimum):

- **Tree Canopy (deciduous, coniferous, palms)**
- **Impervious Surfaces (buildings, roads, other impervious)**
- **Grass/Open Space**
- **Water**
- **Bare soils**



Tree Canopy and Land Cover Mapping

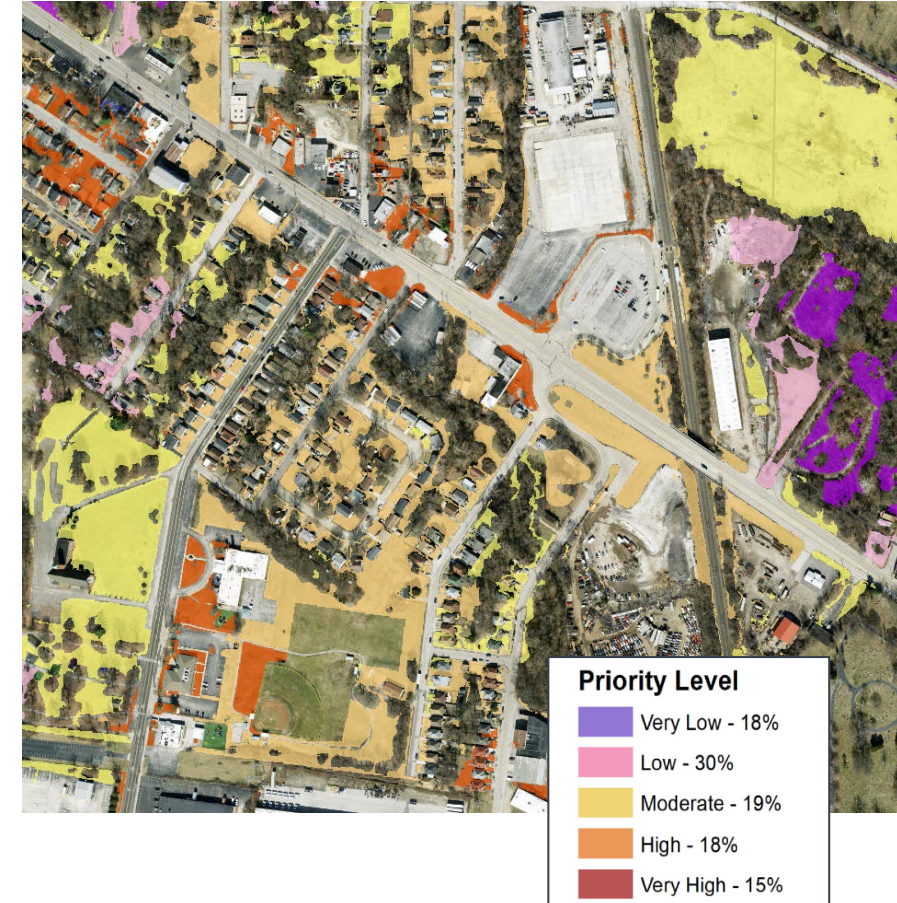
Source Data

Tree Canopy Assessments use multispectral (near-infrared) imagery or LiDAR data and artificial intelligence to extract meaningful insights.

- Imagery
 - **NAIP (60cm) - Free from USDA**
 - Nearmap (10cm) - Purchase, but included in pricing of tree mapping
 - Satellite (30cm - 1.5m) - Purchase, additional quote from satellite vendors
- LiDAR
 - Point cloud processing to create elevation and surface models - sometimes free from public data or for purchase if certain specifications are needed
 - Helicopter or fixed-wing acquisition (UAV as well, but not for city-wide mapping)
 - Usually 50cm - 1m resolution products

Tree Planting Map (Priority Planting Area)

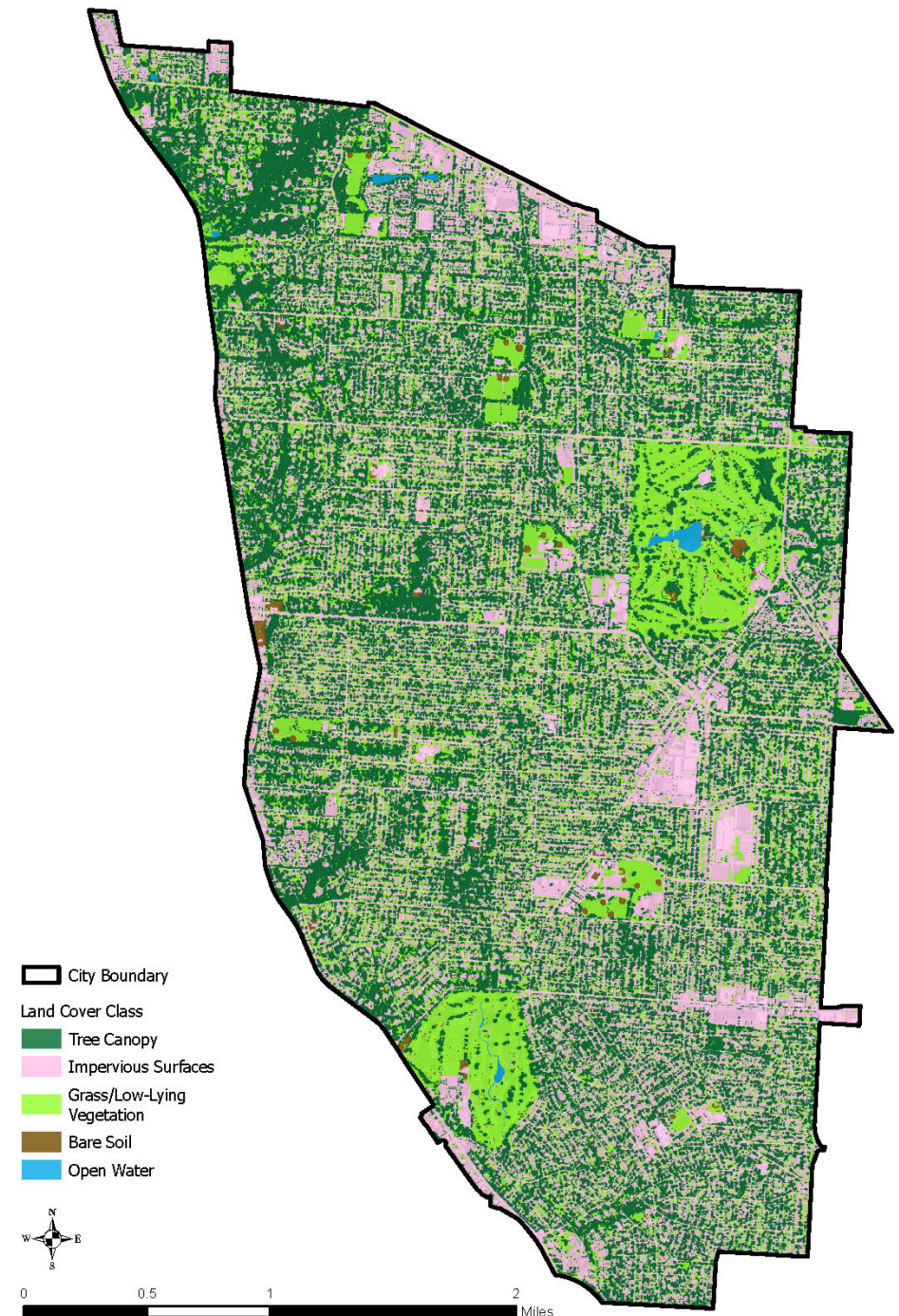
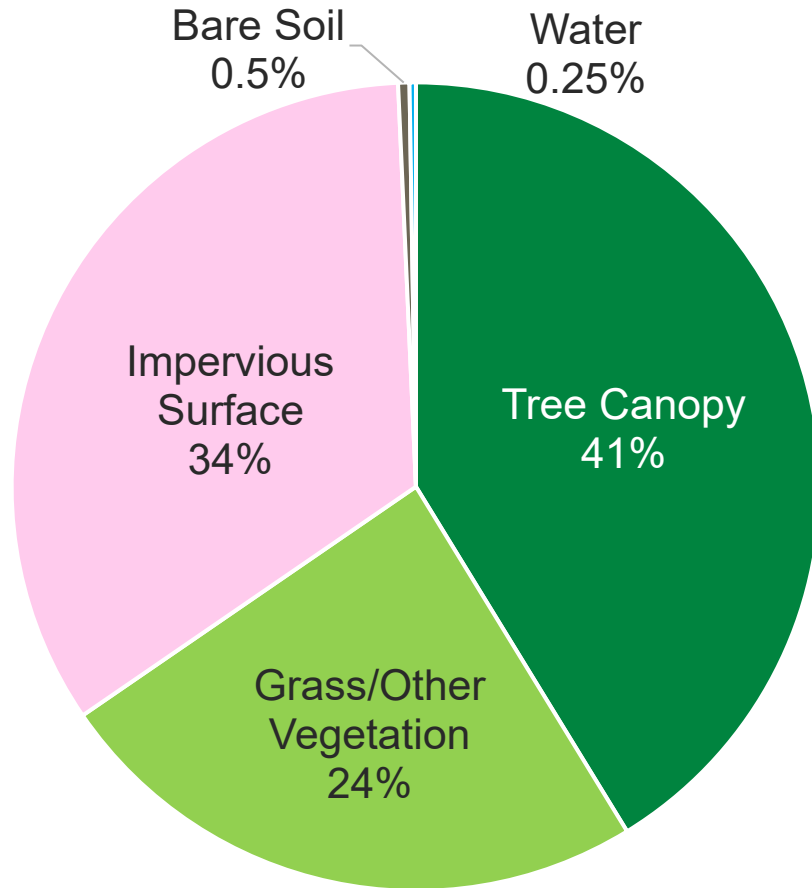
- Combining all grass/open space and bare soil areas.
- Removing non-feasible planting areas, such as agricultural, recreational fields, airports, and major utility corridors.
- Assessing environmental features, including proximity to hardscape, canopy fragmentation, floodplain proximity, slope, and urban heat island index.
- Assessing socio-economic equity, can be from a variety of state or local data sources depending on the region
- Through GIS modeling assigning a value from **Very Low to Very High** to areas on the map based on the calculated average.





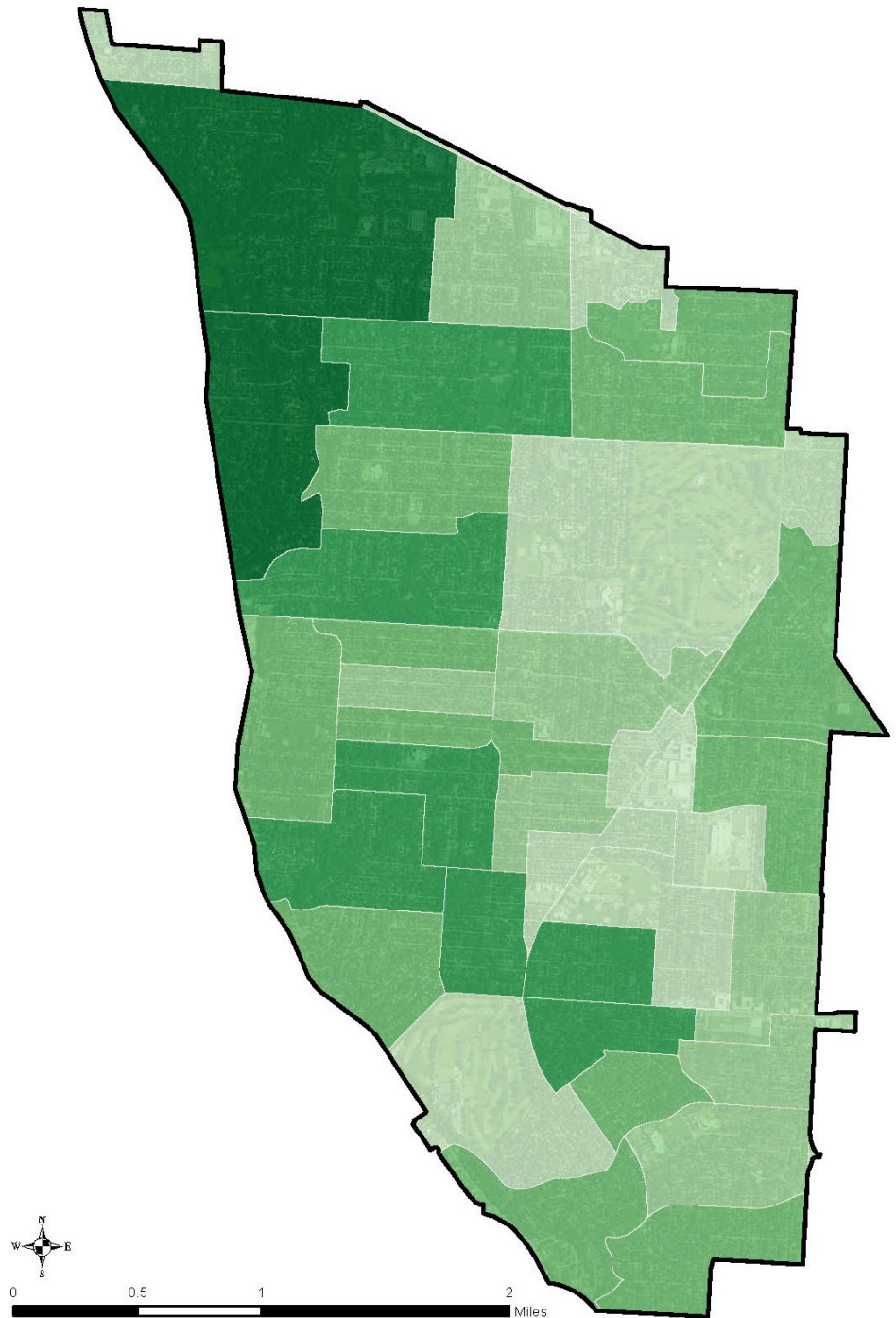
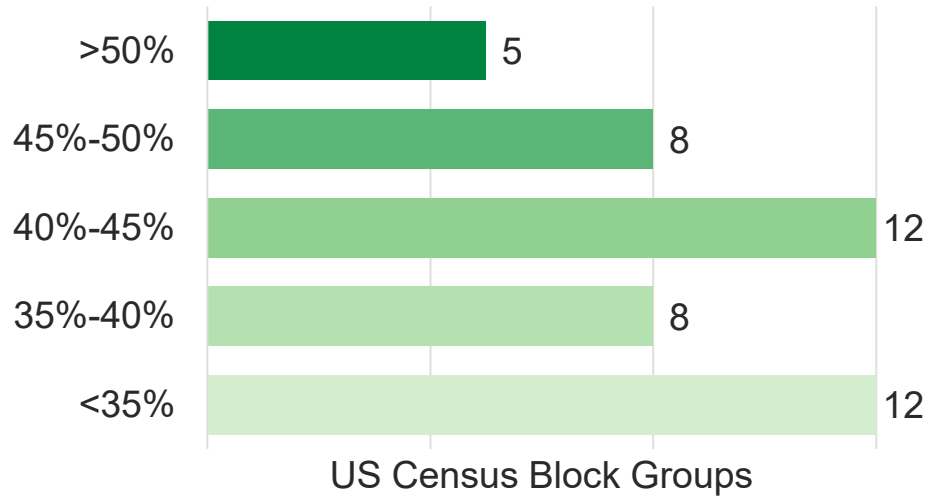
PRELIMINARY RESULTS

Upper Arlington Land Cover



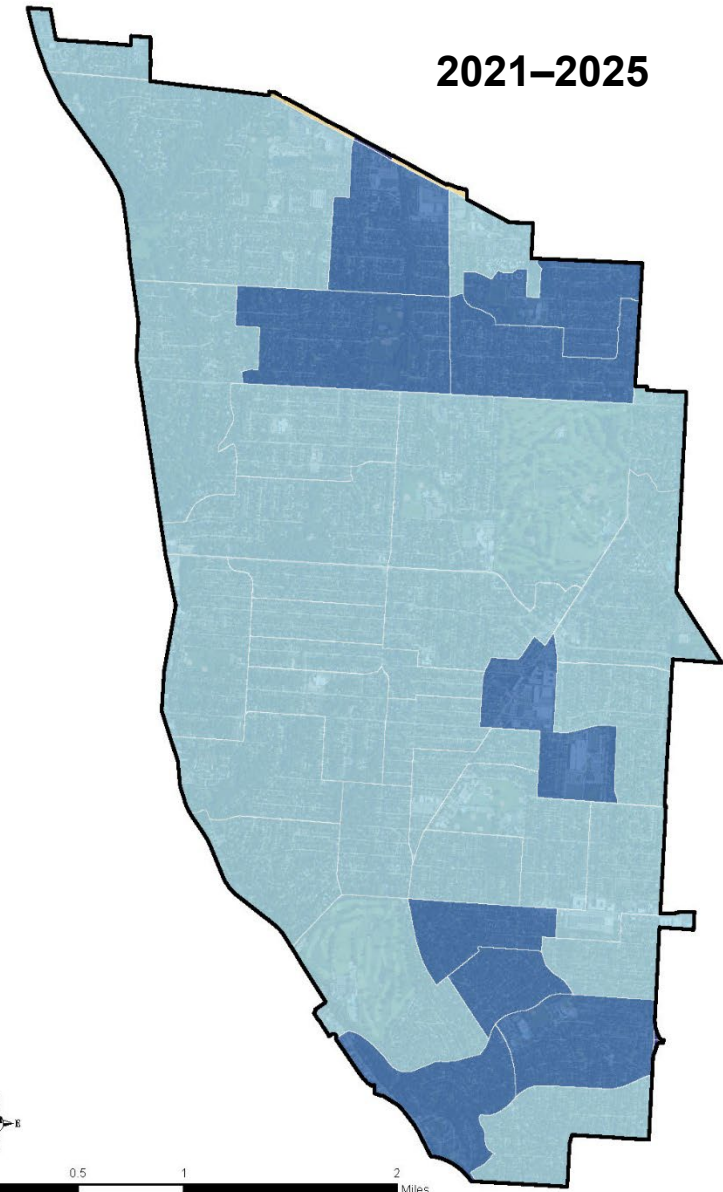
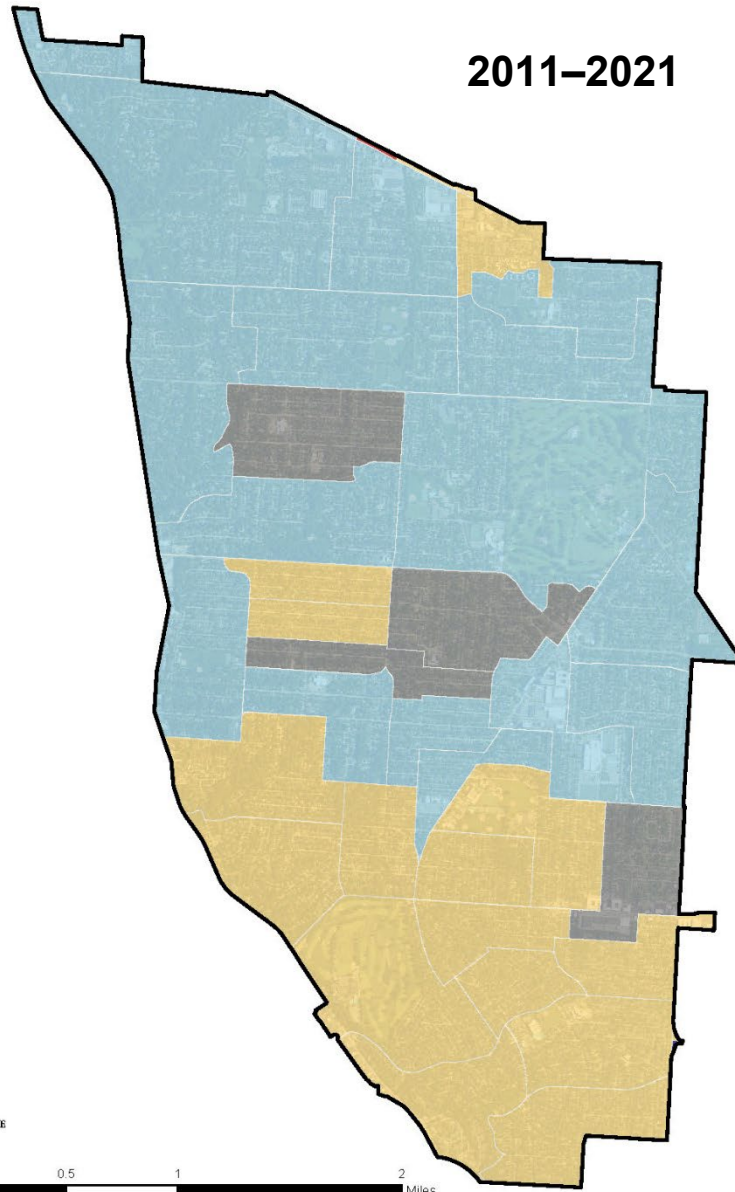
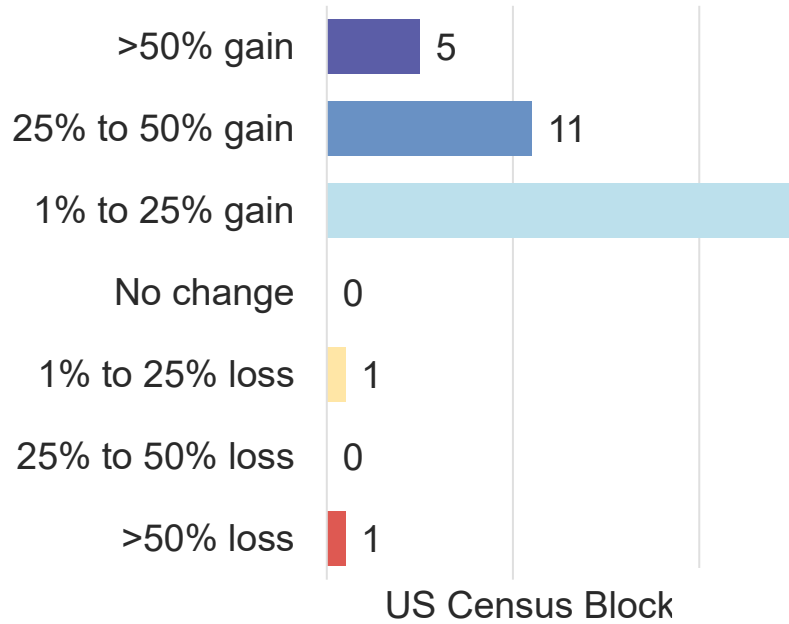
Tree Canopy Cover by Block Group

41%

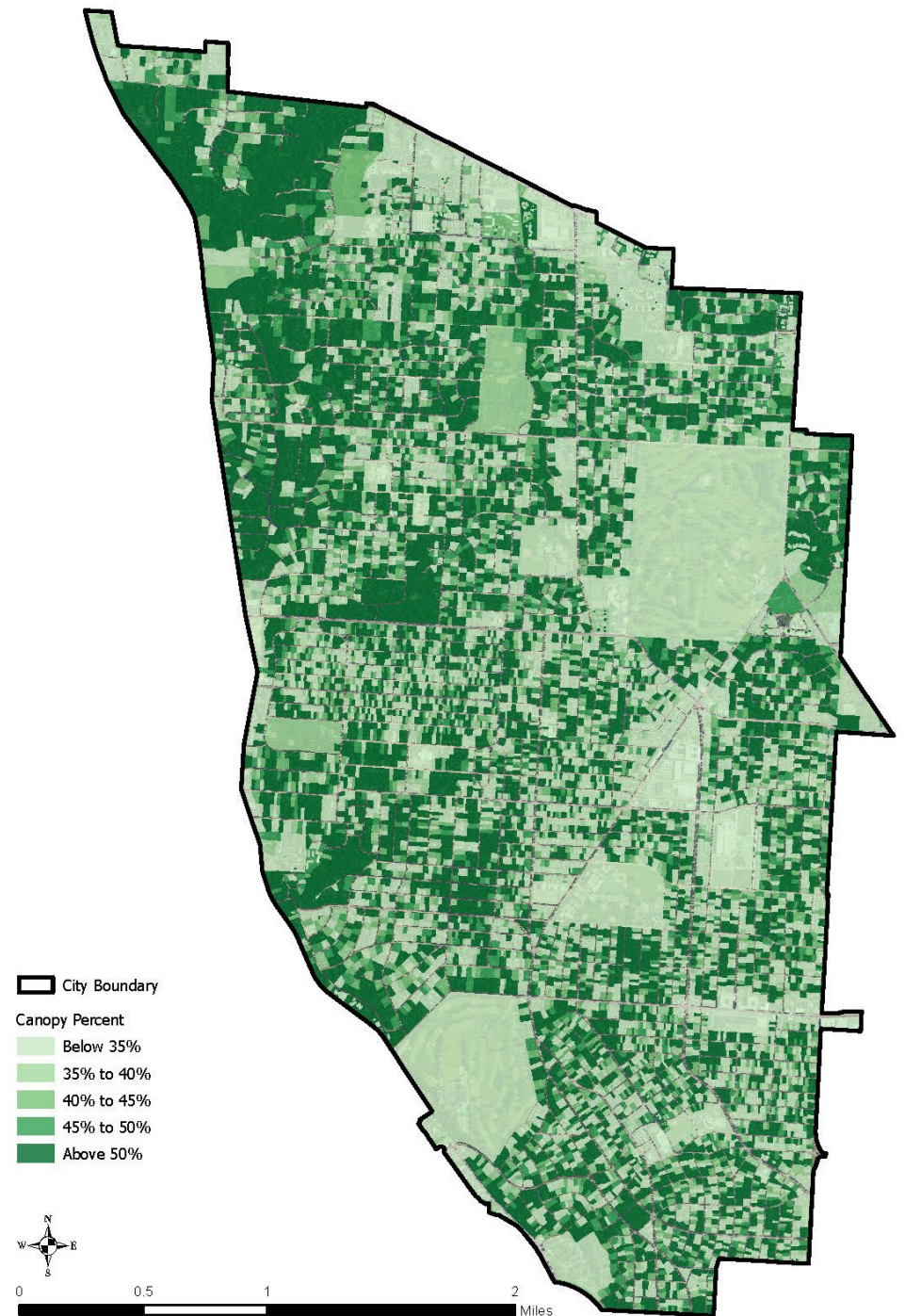
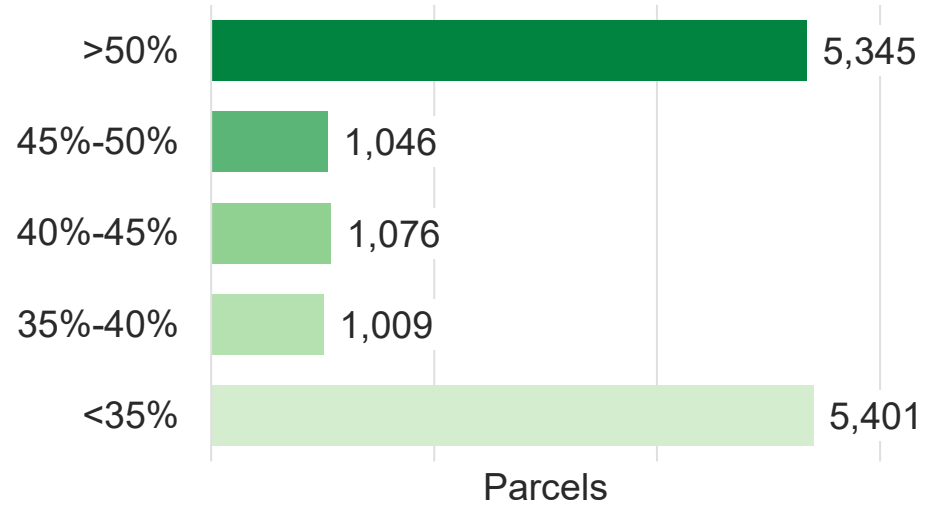


Tree Canopy Change, 2011–2025

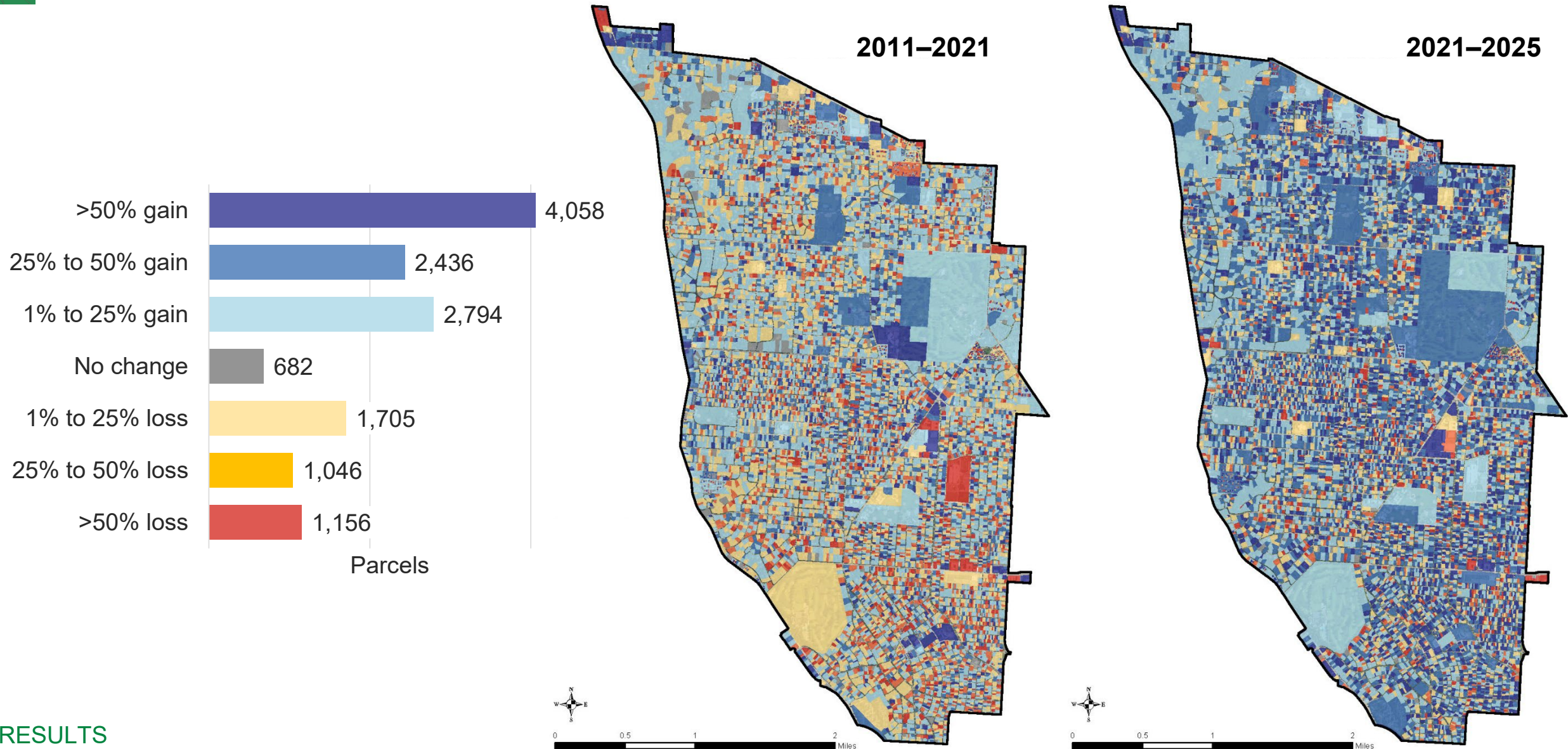
+22%



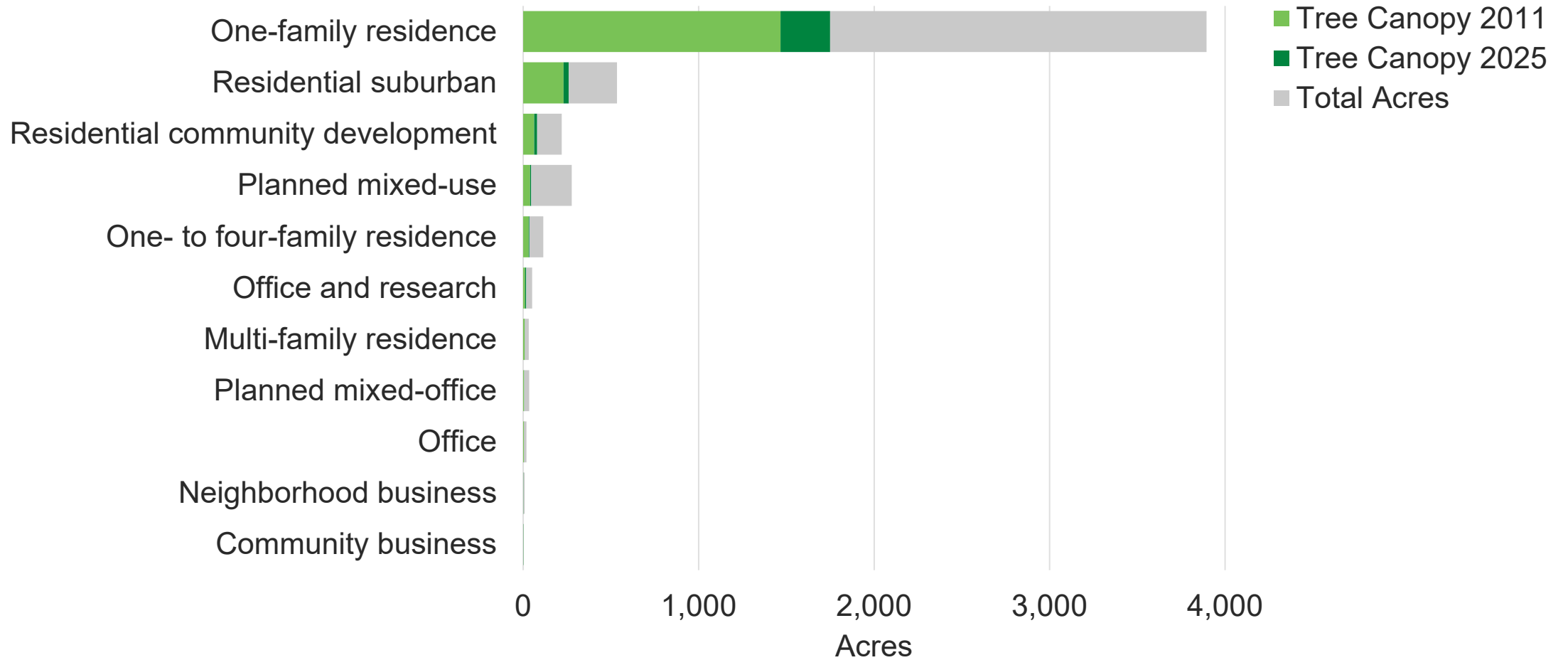
Tree Cover by Parcel



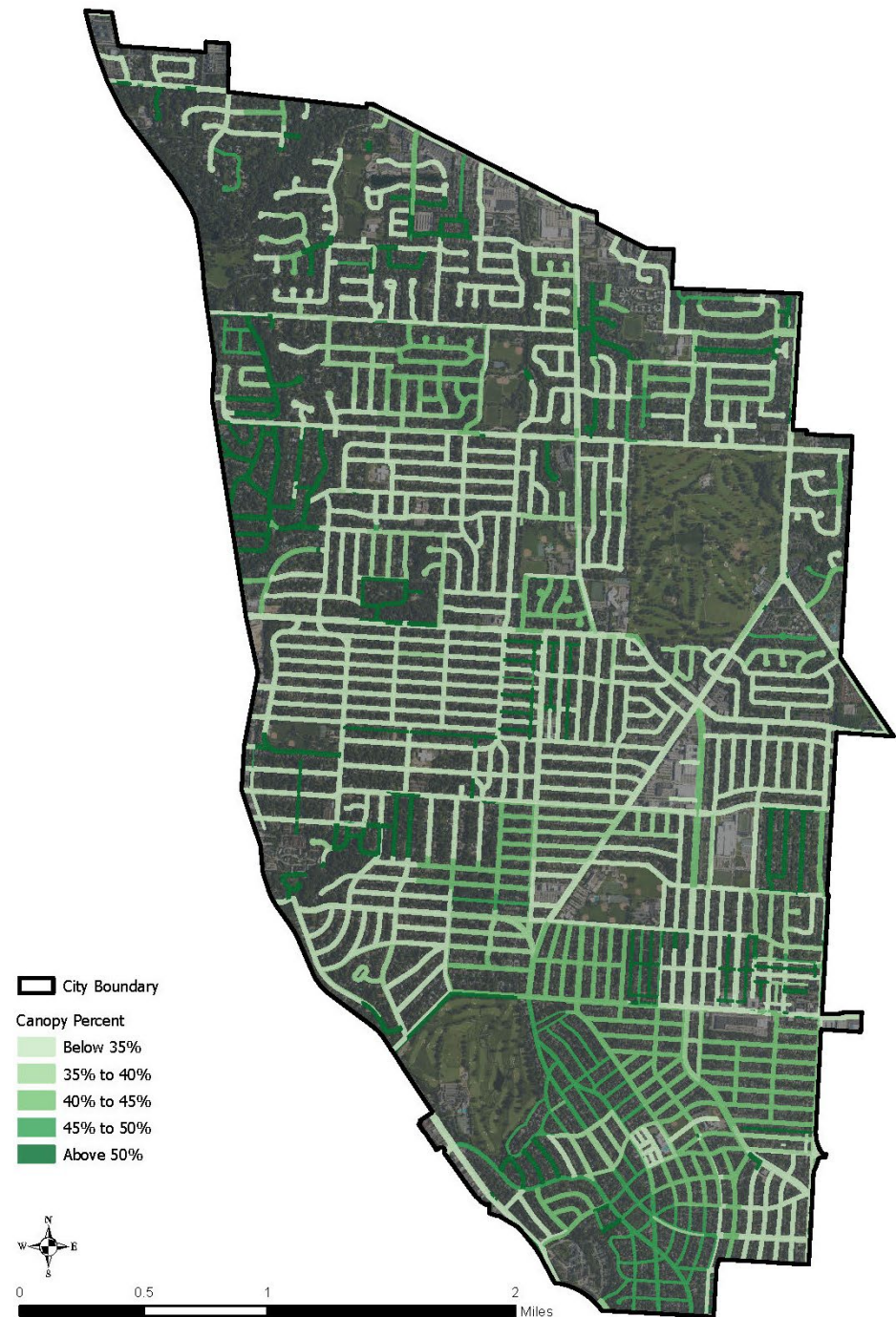
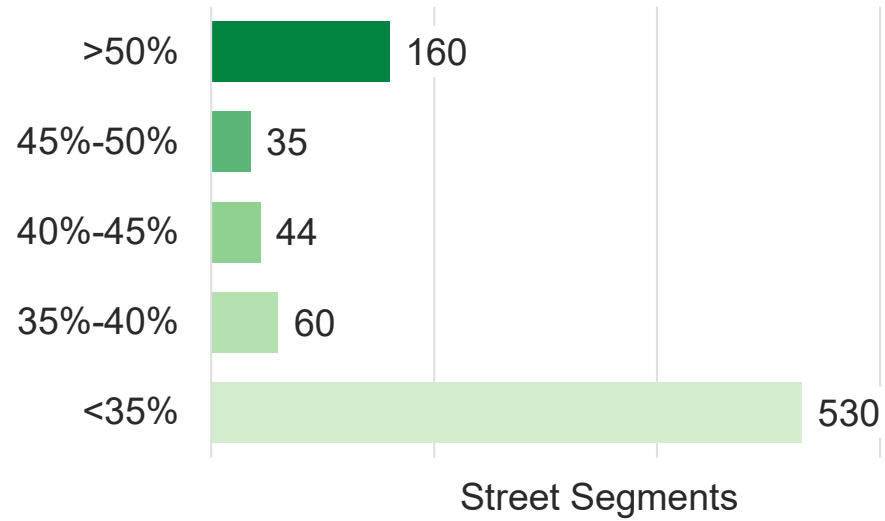
Tree Canopy Change by Parcel, 2011–2025



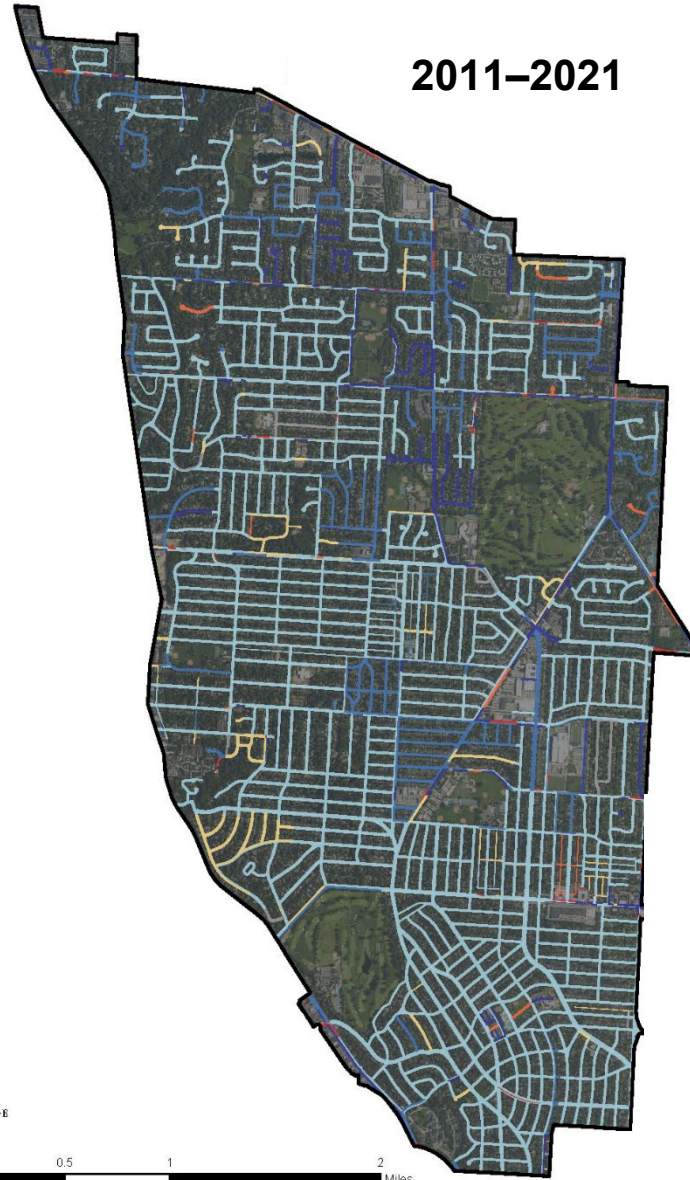
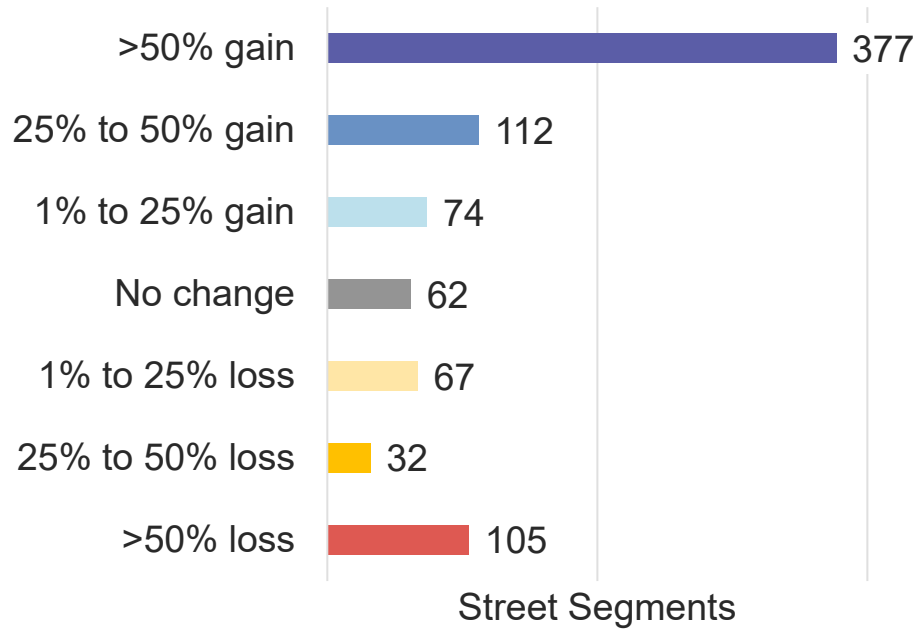
Tree Cover by Zoning District



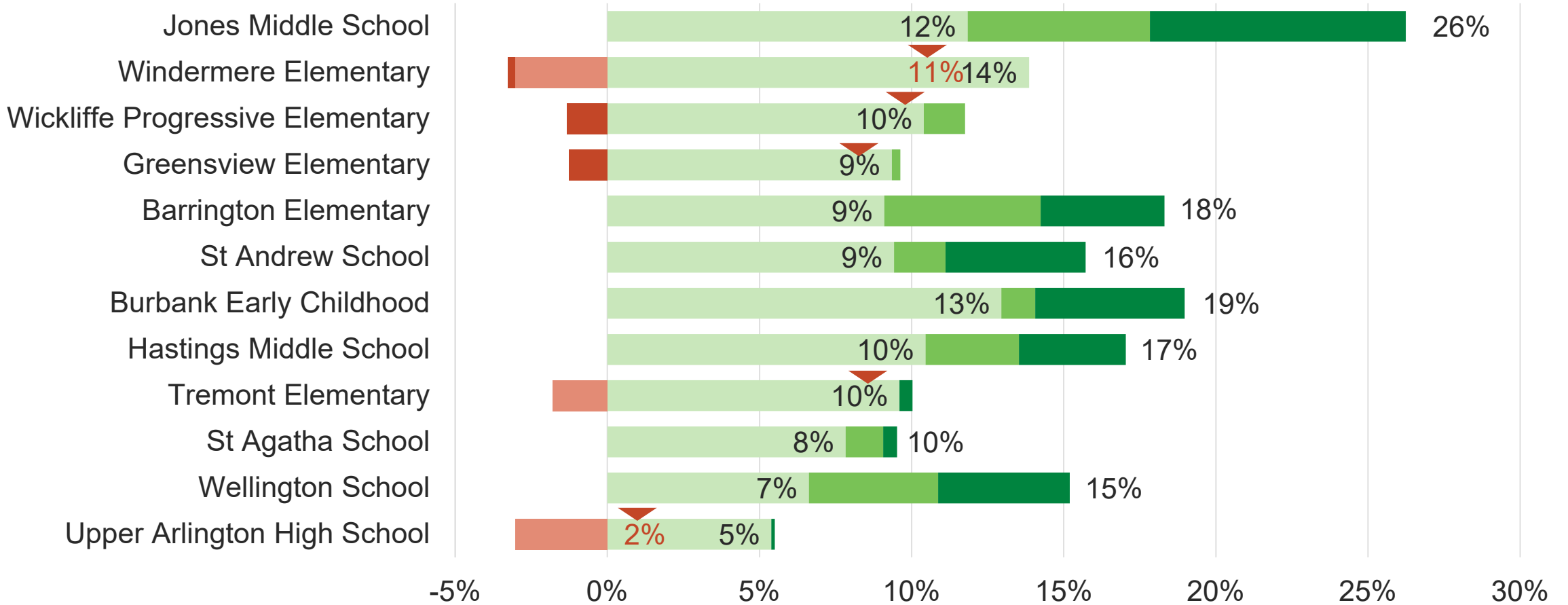
Street Segments



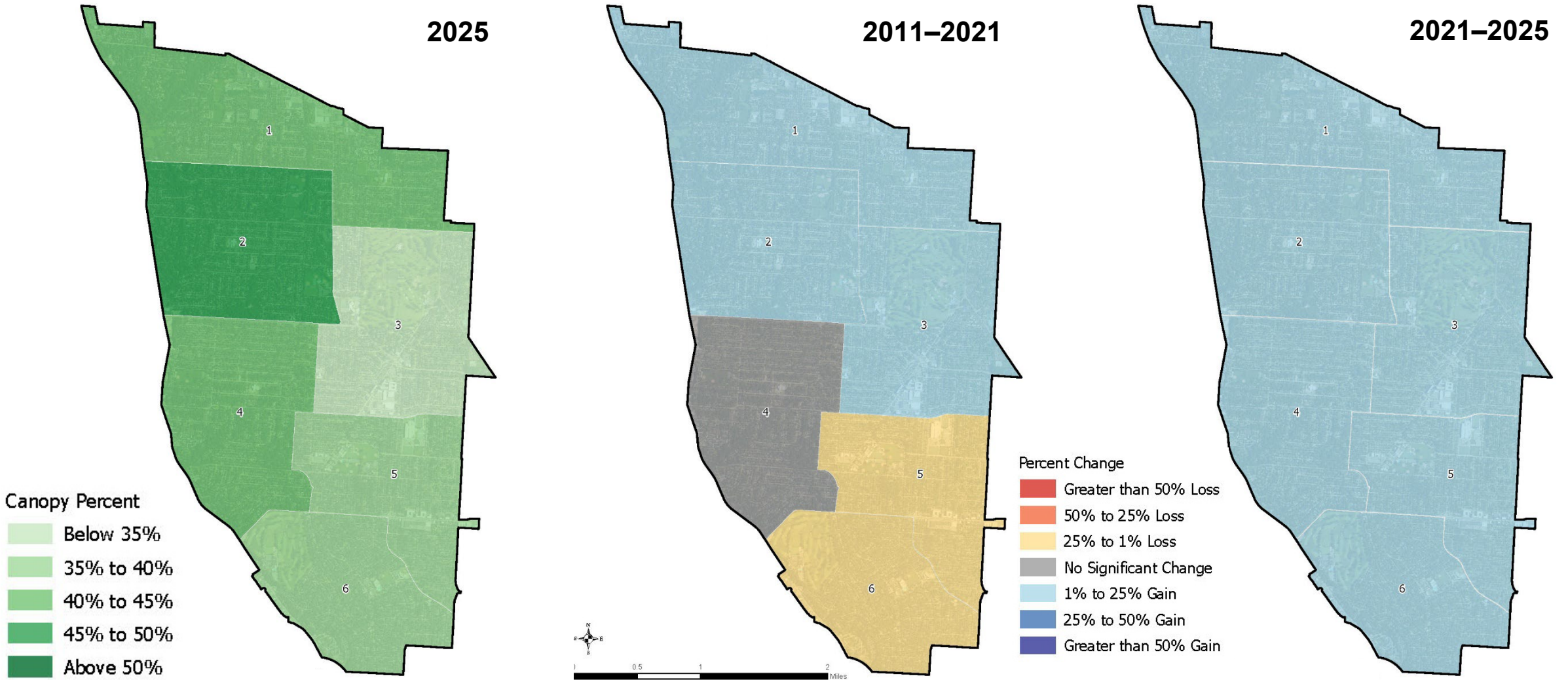
Street Segments



Tree Cover by School



UA Forestry Management Areas



RESULTS

Tree Cover at Parks

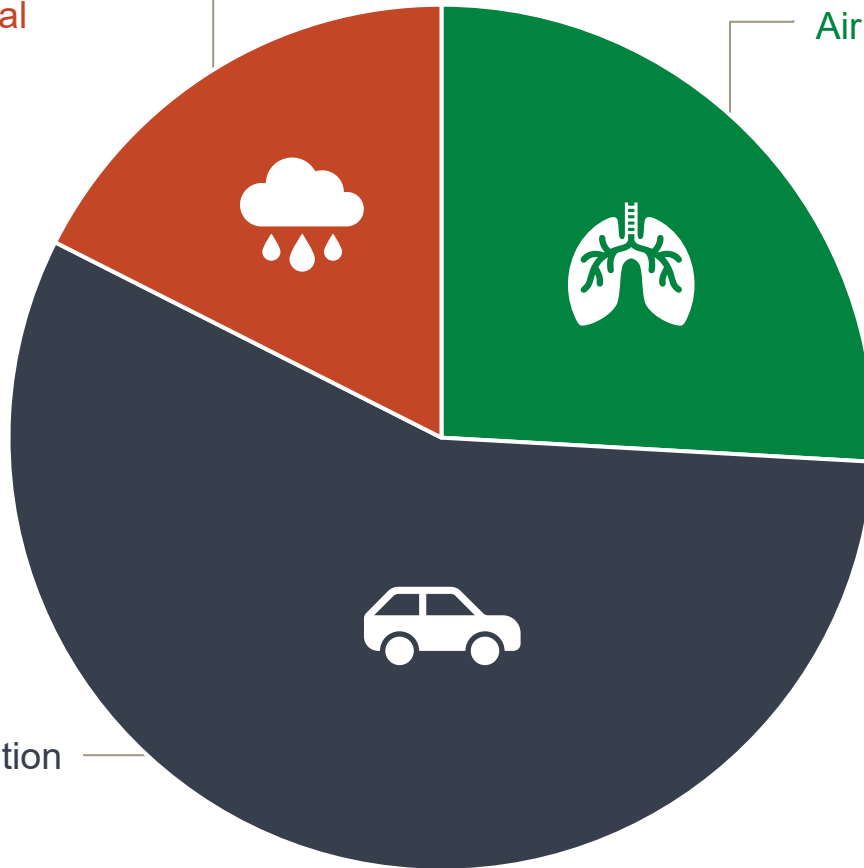
PARK	ACRES	TREE COVER			TREE COVER CHANGE		
		2011	2021	2025	2011-2021	2021-2025	2011-2025
Northwest Kiwanis Park	21	28%	33%	44%	15%	35%	55%
Thompson Park	49	22%	27%	38%	26%	39%	76%
Sunny 95 Park	14	11%	15%	25%	34%	62%	118%
Westover Park	1	40%	43%	62%	6%	43%	52%
Northam Park	21	16%	17%	23%	6%	35%	43%
Reed Road Park	17	15%	20%	27%	32%	38%	81%
Cardiff Woods Park	2	90%	92%	96%	1%	5%	6%
Miller Park	4	52%	51%	67%	-2%	32%	30%
Oxford Park	1	60%	65%	77%	8%	19%	29%
Smith Nature Park	3	94%	90%	99%	-4%	10%	6%
Tremont Fountain Park	1	17%	25%	49%	53%	92%	195%
Fancyburg Park	24	26%	33%	39%	25%	19%	49%
Mallway Park	1	19%	22%	34%	20%	52%	82%
Jack Nicklaus Park	2	55%	65%	89%	17%	37%	61%
Nursery Park	1	45%	51%	67%	15%	29%	49%
Stratford Park	1	57%	64%	73%	13%	15%	30%
Wyandot Park	3	51%	54%	61%	5%	13%	18%
Charing Ravine Park	2	95%	95%	97%	-1%	3%	2%
Crafton Park	1	53%	66%	85%	24%	30%	60%
Miller Park	1	98%	78%	94%	-20%	19%	-4%
Triangle Park	1	35%	36%	35%	1%	-2%	-1%
Devon/Cambridge Parkette	<1	26%	34%	57%	33%	66%	120%
Burbank Park	6	17%	15%	20%	-10%	36%	22%
Edgevale/Kioka Parkette	<1	41%	52%	72%	27%	39%	77%

Tree Benefits


Annual Benefits: \$2,281,575

Stormwater Runoff Reduction
44,810,000 gal
\$400,378

Air Pollution Removal
191,900 lb
\$590,656



Carbon Sequestration
2,980 ton
\$1,290,541



Lifetime Carbon Storage
88,150 tons CO₂
\$38,144,459

Deliverables

- **Urban Tree Canopy (UTC) Assessment Report** — Written document summarizing the results. Prioritized planting analysis to include stormwater, heat island, and equity data.
- **Data** — Expanded results of the study that can be independently analyzed and imported into existing systems.
 - GDB database files/Shapefiles
 - Spreadsheets
 - Methodology
- **High resolution maps** — print quality standalone maps for data both in the report and the expanded data set.
- **Presentation** — PowerPoint presentation for community leaders
- **Software** – TreeKeeper Canopy

Thank you!

Questions?

