

**8/13/2025 | 6:30 PM**

**Bob Crane Community Center, Board Room  
3200 Tremont Road**

- 1. Call to Order/Roll Call**
- 2. Approval of Minutes**
  - a. Approve June 4, 2025 Parks & Recreation Advisory Board Meeting Minutes
- 3. New Member Introduction**
- 4. Unfinished Business**
  - a. Fancyburg Master Plan Update
- 5. New Business**
  - a. National Church Residences Corporate Campus Redevelopment
  - b. Older Adult Services
- 6. Updates & Reports**
  - a. Director's Report
- 7. Board Member Comments and Setting Future Agenda Items**
- 8. Adjournment**

**Wednesday, June 4, 2024**  
**6:30 pm**  
**BCCC Event Center Room A**

**CALL TO ORDER**

Meeting was called to order by Chair Christ at 6:30 pm.

**Members Present:**

  x   Sean Caine                        X   Caroline O’Donnell (6:35pm)  
  X   Lindsey Christ                  X   Craig Smith  
  X   Brian Noble                      X   Allison Thomas

**Staff Present:**

  X   Parks & Recreation Director Debbie McLaughlin  
  X   Parks Development & Arts Superintendent, Jeff Anderson  
  X   Recreation Superintendent, Matt Leber

**Other Staff Present:** City Manager Steve Schoeny and Community Development Director Chad Gibson

**APPROVAL OF MEETING MINUTES**

Motion to approve minutes of the Parks & Recreation Advisory Board from the April 9, 2025, meeting.

**Motioned:** Noble

**Seconded:** Cain

**Board Discussion:**

**Voting Aye:** Cain, Christ, Noble, Smith, Thomas

**Abstain:**

**Motion Passed**

**ACTION/DISCUSSION ITEMS- ONGOING BUSINESS**

**AGENDA ITEM- Fancyburg Park Master Plan**

Director McLaughlin and Parks Development & Arts Superintendent Anderson introduced the Fancyburg Park Master Plan process. Doug Boyer, Associate Principal with the Edge Group presented information gathered in Phase 1 (Summer 2024) and Phase 2 (Spring 2025) and how the information shaped the design of the concept plan. The Phase 2 community engagement consisted of an open house in the park, table at the Farmer’s Market and a community survey. Over 600 respondents completed the online survey providing feedback on design concepts and amenities.

Some feed back received that is being reviewed in the concept plan update Includes:

- Playground – steel structure with ground play elements, more swings
- Pickleball - 4 courts, could expand to 5
- Practice wall between tennis and pickleball could provide space for practice for both sports, a sound barrier and potential location for a mural for public art in the park
- More opportunities for nature play – play opportunities and assist with stormwater needs along with park development
- Parking - expand from 42 up to 88 spaces, align curb cut with Wickliffe Road
- Amphitheatre – play areas with passive seating area
- Pavilion – accommodate up to 120 to serve as a future day camp location, year-round restrooms. Sleek and modern design preferred.

Mr. Anderson presented the upcoming schedule which will include a design and budget review as the master plan is finalized. The maintenance facility design process is scheduled to begin this summer.

Residents addressed the Board with comments about the park master plan. Several identified themselves as dog walkers that appreciate the park as it is with greenspace and mature trees. There were concerns with upgrading athletic fields, size of pavilion and location/use of maintenance facility.

Staff and consultants clarified that the athletic field upgrade is improving drainage on existing soccer fields keeping the fields open and the maintenance facility is relocating the same functions within the park.

While some are optimistic about the plan and park upgrade, others cautioned on scale of parking, potential reductions in greenspace for built areas and need for maintenance. There were comments about the need for better connections and safety in crossing the street.

Board Chair Christ thanks residents for providing their feedback at tonight’s meeting. The Board asked a few questions on the design.

- Clarify summer camp capacity, need/size for pavilion – plans are to relocate the fourth location that is currently utilizing a school facility to Fancyburg Park. This will allow three park camp sites, and one schools location with each site accommodating 80-120 participants.
- Nature walk/play - maintain existing and open up to expand area
- Walking paths – opportunities for more connectivity and study crosswalks
- Wetland is this a result of needing more area for drainage? - It is not intended to feel like drainage. It received a significant amount of support in Phase 1 community engagement. Detail design will determine park needs and capabilities.
- Service area – truck access, lighting to be studied – proposed site is slightly smaller than current location; can we study other areas in the park such as the west end – this moves the challenges to another section that is used for parking and does not have screening as proposed location.
- Mulch in playground challenges accessibility to swings – mulch is accessible and prevents wear and tear with poured-in-place surface.
- Could open air shelter be removed – it provides shade and seating space for parents near playground; the size is small, similar to new shelters at Northam Park
- Parking – could parking be added along streets into parks - that would cut more into the park and remove more useful space

The Board discussed the scale of pavilion and parking to determine needs for day camp and programs. Perhaps wording other than pavilion would best identify intended scale and usage of the facility. The parking could provide relief to on-street parking.

### **ACTION/DISCUSSION ITEMS- NEW BUSINESS**

#### **AGENDA ITEM- City Manager Overview of City Master Plan Process**

City Manager Steve Schoeny shared with the Board the City's Master Plan process. This process will provide a City land use plan and master plan to guide what the city wants to be over the next 50 years. In conjunction with this process, a new Parks & Recreation Comprehensive Plan will be established since it is getting close to 10 years old. The current City Master Plan, adopted in 2001, guided several city planning efforts.

The schedule is to present project and overview of the Request for Proposals to City Council next week, release RFP, and select firm in fall 2025. City Council is appointing a Master Plan Steering Committee to provide community leadership. One item for the City leadership and selected firm is to determine the role for this Board and BZAP in the process.

#### **AGENDA ITEM- Summer Operations**

Recreation Superintendent Matt Leber provided an overview of seasonal programs and operations:

- Pools – cool start to season, allows staff training. Sales are currently lower than usual, hopeful they improve as weather gets hot. Swim lessons started and are doing well. Changed hours at Tremont Pool Noon-9 for late swim based on resident feedback and kept Devon Pool and RRWP 11-8.
- Northam – tennis players enjoying conditions with underground irrigation. League play began and fits within court usage. Memberships are down by 12 from this time last year. Sports storage is working between the organizations. Pickleball courts are heavily used; typically, at least 4 courts in play; reservation available for four courts with two courts for drop-in.
- Summer Day Camp – four locations this year with 420 children, camp started this week. Twelve children in TR camp
- Adaptive workshop – staff conducted a discussion with parents while children were engaged in activities. Learned key types of programs between recreation, enrichment and skill development. Starting point with discussion and awareness of interests and resources. Discussed adaptive programs for all and inclusive opportunities for individuals in traditional programs. We currently employ two part-time employees with 30 years of experience in therapeutic recreation.
- Field Sports – wrapped up soccer season, this year provided specific time slots for fields. Baseball tournament last weekend was challenging with rain. All the work over past years paid off with some fields being playable.
- Bob Crane Community Center – membership is current over 6,000 for fee-based members and over 2,000 for Silver Sneakers and Renew Active. Age 10-17 largest age group. Overwhelming response from seniors on the facility and amenities. Modifications – removed reservations in child watch, eliminated time blocks fees in e-sports to a membership add-on or unlimited per day play. In e-sports it is challenging to get players linked up to all the necessary accounts.

Added staffing at entrances during peak times, building attendants and fitness areas. Averaging 1058 pass visits and 50 daily admissions.

- Safety Town – starts next week
- Movie in the Park at Thompson Park next Friday
- Arts on Arlington – next Thursday from 6-9, two bands, arts vendors, community groups and beer and wine garden.

**ACTION/DISCUSSION ITEMS- Updates & Reports**

**AGENDA ITEM- Board Member Comments and Setting Future Agenda Items**

**ADJOURNMENT**

**Motioned:** smith

**Seconded:** thomas

**Voting Aye:**

**Abstain:**

**Motion Passed**

**Meeting was adjourned at 8:55 pm**

---

**Chairperson**

**ATTEST:** \_\_\_\_\_



# Community Engagement



# Community Engagement

## Process

### Phase I

The first phase of community outreach for the renovation of Fancyburg Park returned valuable insights and countless thoughtful neighborly conversations.

Step One consisted of two open houses: one at the August 6th National Night Out in Fancyburg Park and a second at the August 7th Upper Arlington Farmer's Market at the Tremont Center. Visitors were asked to vote on their preferred park amenities as well as provide any additional thoughts and ideas on how to improve Fancyburg Park.

Step Two consisted of an online survey, compiled by EDGE and Upper Arlington Parks & Recreation staff and distributed via their email database. Similar questions to the open houses were posed, gathering feedback on amenities and preferences. Over 900 survey responses were recorded.

### Phase I Outreach

- National Night Out
- Farmer's Market
- Online Survey
- PRAB Meeting
- City Council

### Phase II

Phase II of the master planning process engaged residents via additional open houses and a second survey. Upper Arlington Parks & Recreation staff as well as members of the design team held an open house at the Fancyburg Park shelter on May 7, and Parks and Recreation Staff also displayed project boards and answered questions at the Spring Fling at Sunny 95 Park. Residents were asked to assist with design decisions regarding the playground and park pavilion, in addition to gather their general thoughts and input on the overall park master plan. A second online survey was also released, garnering over 600 responses.

### Phase II Outreach

- Spring Fling
- Fancyburg Park Open House
- Online Survey
- PRAB Meeting
- City Council



# Community Engagement - Fall 2024 (Phase 1)

## In Person Feedback

### Play Character



THEMED PLAY STRUCTURES



ROPE STRUCTURES



PLAY TOWERS



MUSICAL PLAY EQUIPMENT



LOG CLIMBERS



TREE HOUSE



GROUND / ACCESSIBLE PLAY



NATURE PLAY

### Architecture Character



OPEN AIR SHELTER (TRADITIONAL)



SHADE STRUCTURES



OPEN AIR SHELTER (GEOMETRIC)



FOUR SEASON PAVILION (MODERN)

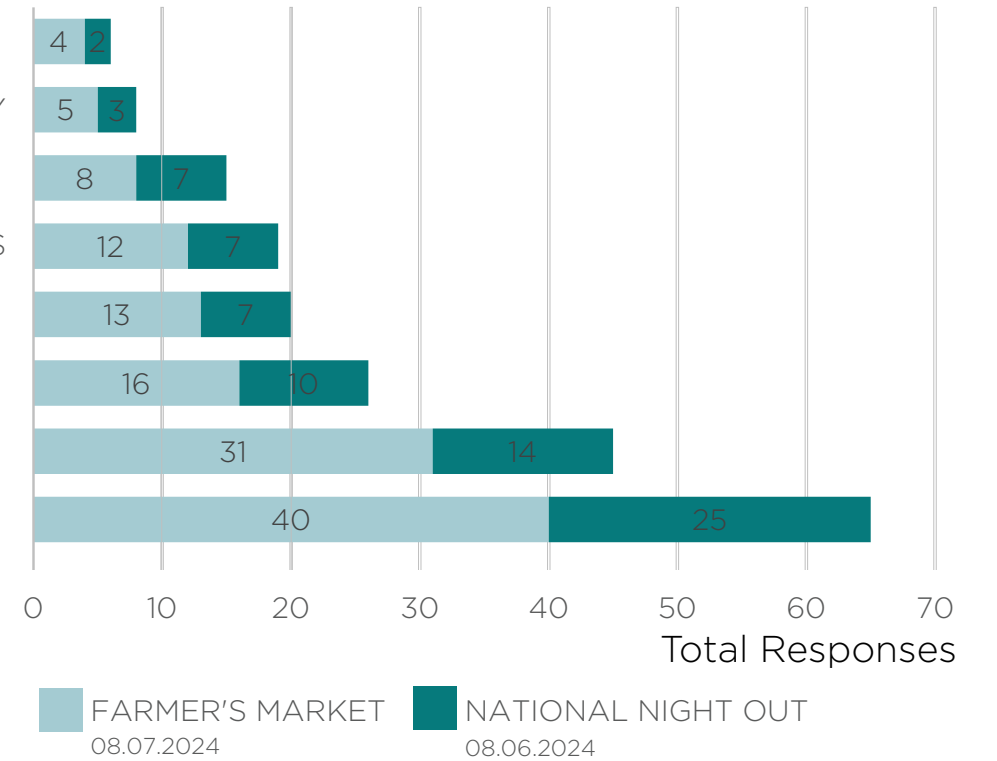


FOUR SEASON PAVILION (TRADITIONAL)

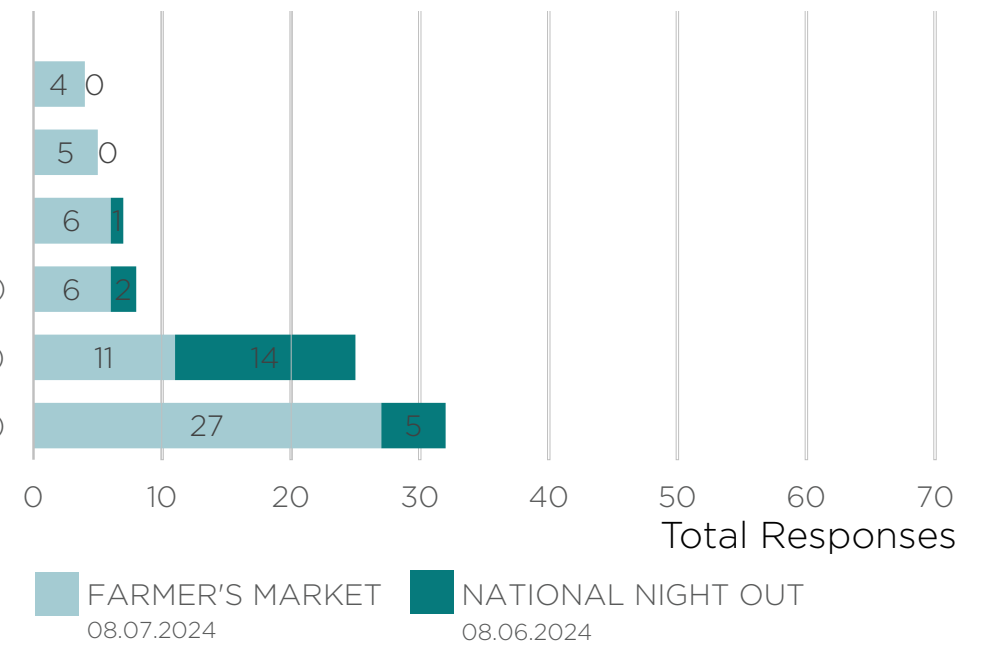


PUBLIC MURALS

- MUSICAL PLAY EQUIPMENT
- GROUND / ACCESSIBLE PLAY
- ROPE STRUCTURES
- LOG CLIMBERS
- PLAY TOWERS
- THEMED PLAY STRUCTURES
- NATURE PLAY
- TREE HOUSE



- OPEN AIR SHELTER (GEOMETRIC)
- SHADE STRUCTURES
- PUBLIC MURALS
- OPEN AIR SHELTER (TRADITIONAL)
- FOUR SEASON PAVILION (TRADITIONAL)
- FOUR SEASON PAVILION (MODERN)



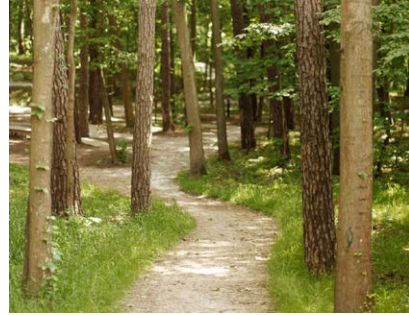
# Community Engagement - Fall 2024 (Phase 1)

## In Person Feedback

### Passive Recreation Activities



NATURE PATH / BOARDWALK



WOODLAND PATH



POLLINATOR MEADOW



WALKING TRAIL



INTERACTIVE WETLAND



SMALL GROUP SEATING

### Active Recreation Activities



BASEBALL / SOFTBALL



TENNIS



MEASURED RUN / WALK ROUTES



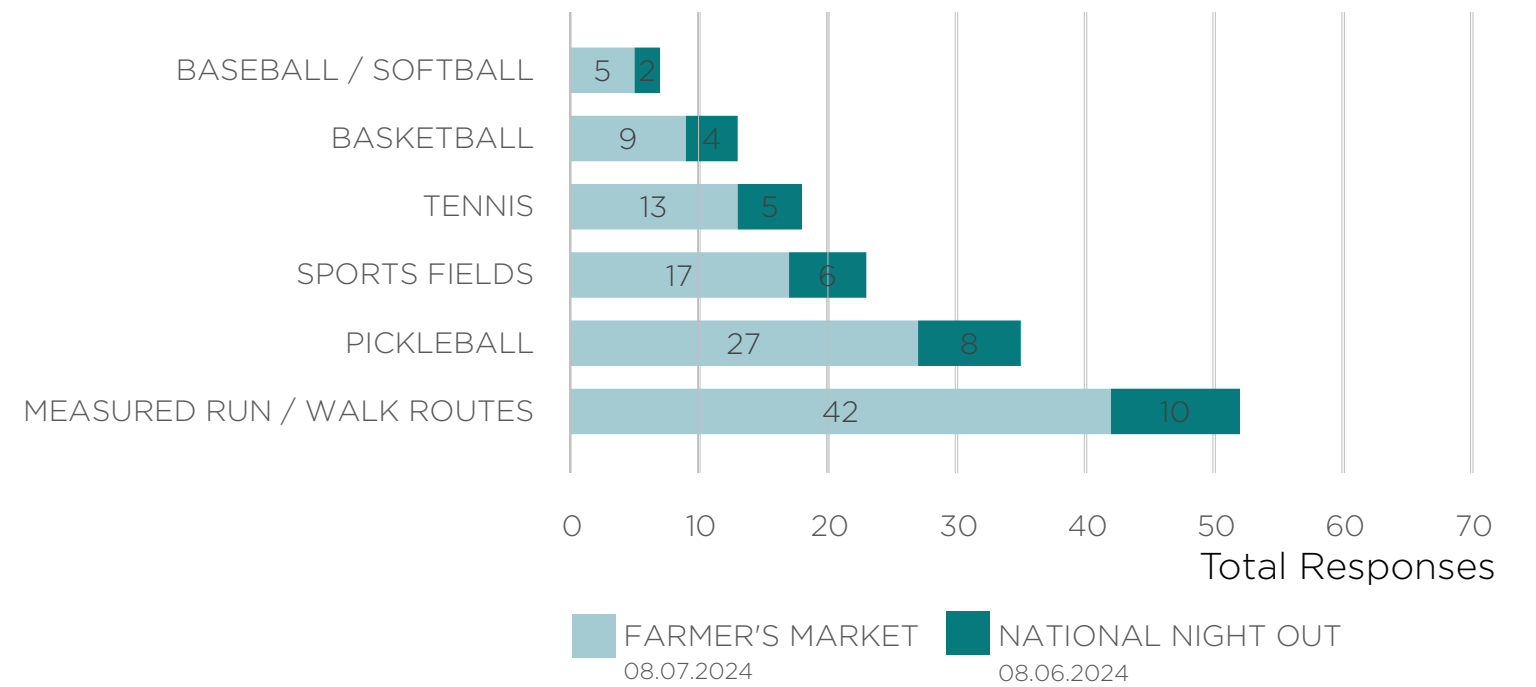
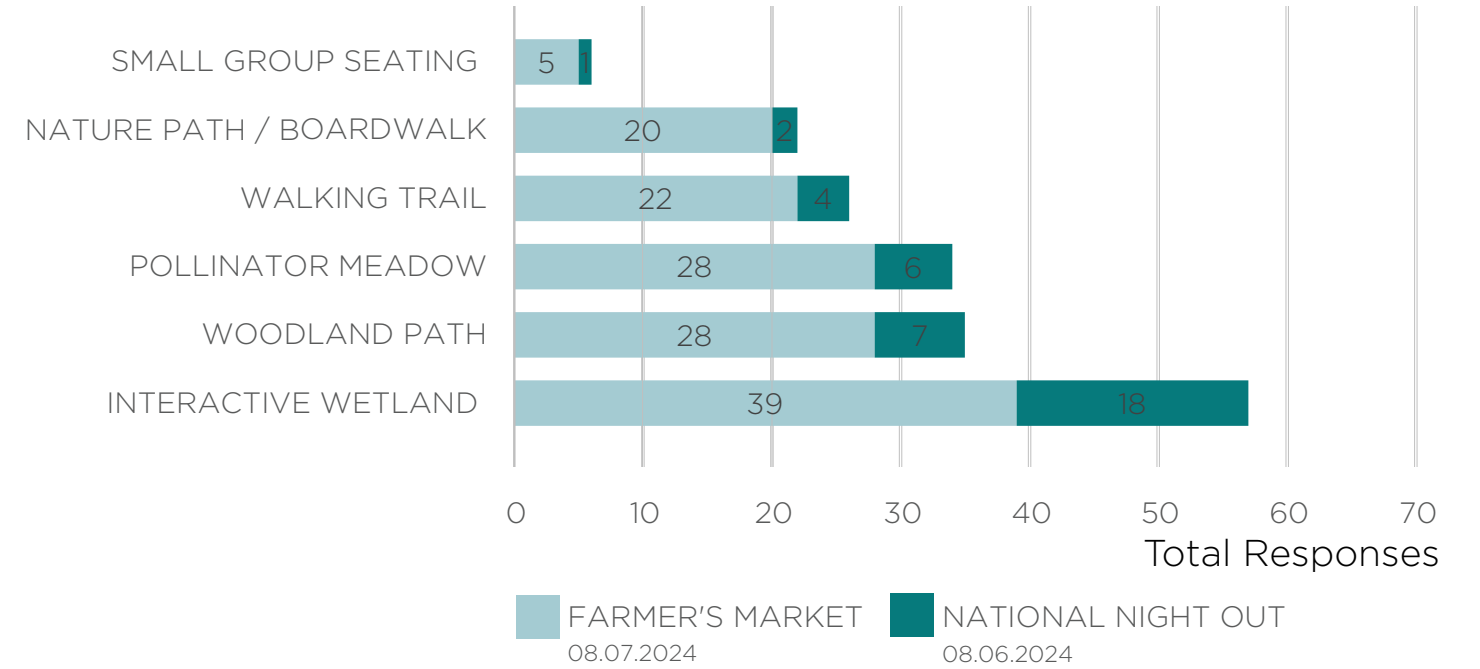
BASKETBALL



SPORTS FIELDS



PICKLEBALL



# *Tell us what you would like to see at Fancyburg Park*



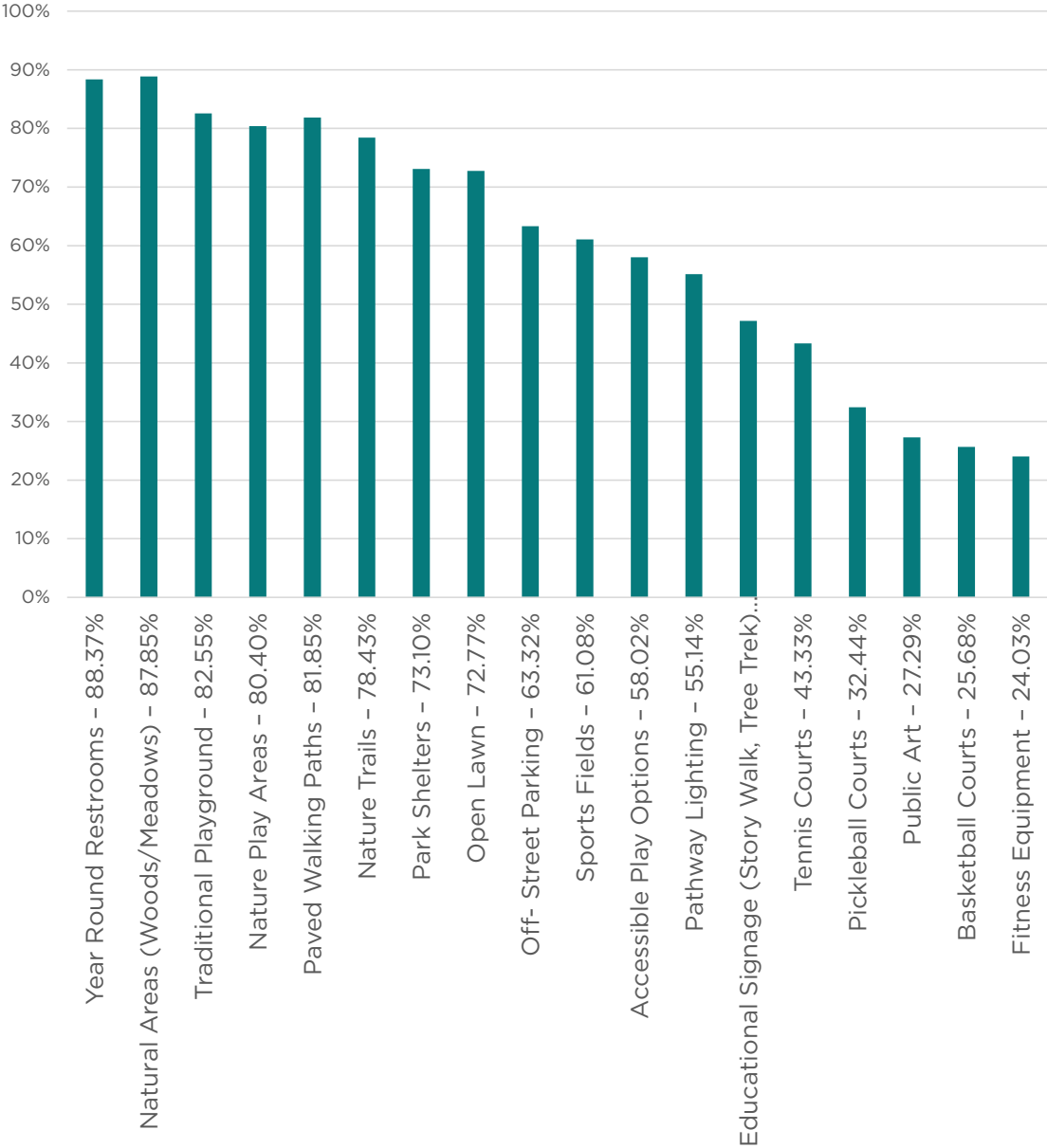
# Community Engagement - Fall 2024 (Phase 1)

Online Survey Results

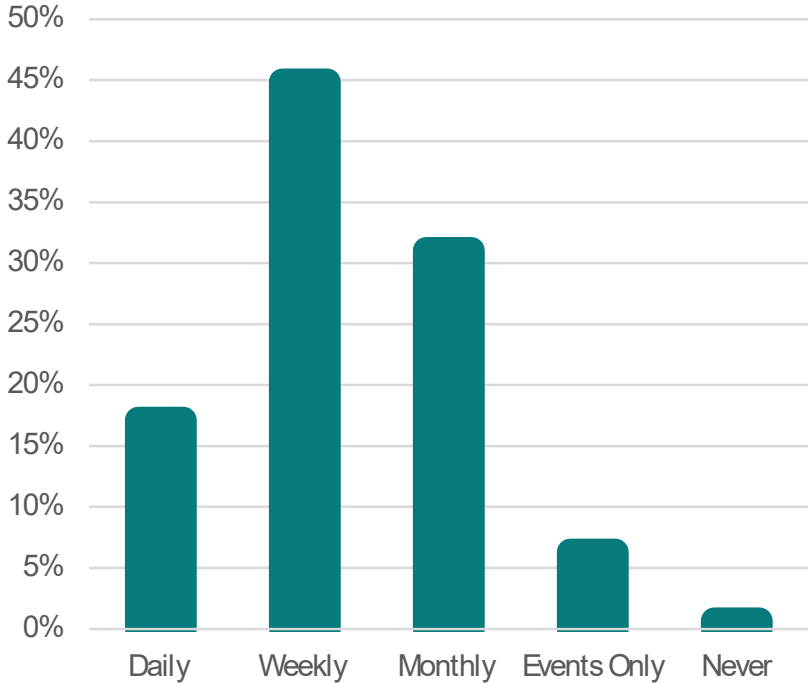
**905** total responses

**97%** of responses were UA residents

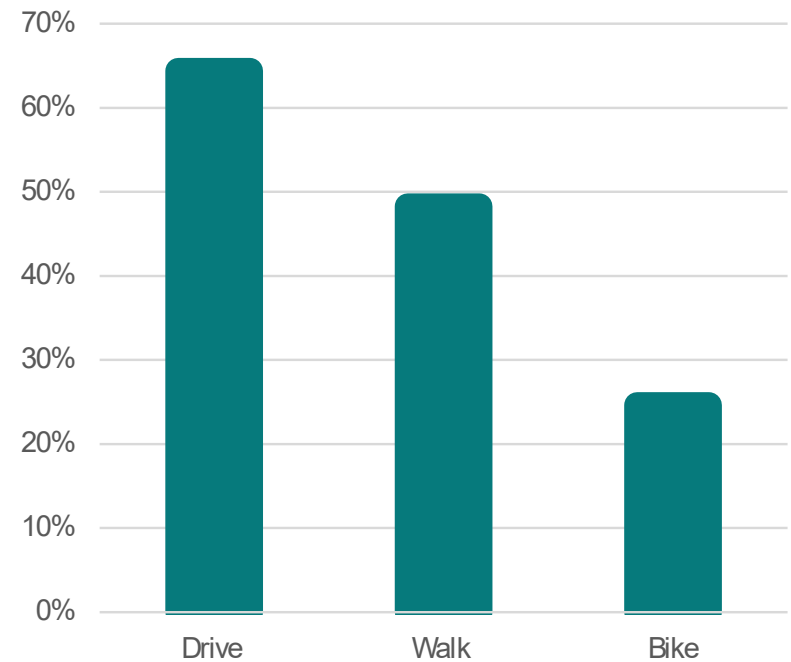
## Please share your level of interest in each of these possible amenities:



## How often do you visit Fancyburg Park?



## How do you and/or your family typically get to Fancyburg Park? (Select all that apply)



# Community Engagement - Fall 2024 (Phase 1)

## Online Survey Results - Top Takeaways

### Splash Pad

- A significant number of responses requested a splash pad.

### Drinking Fountains

- Drinking fountains and water bottle refill stations are also suggested, especially in multiple locations across the park.

### Dog-Friendly Amenities

- There are numerous requests for a fenced dog park, ensuring dogs have a safe, dedicated space.
- Dog water fountains and waste bag stations are also mentioned.

### Play Areas

- Many appreciate the natural elements for play, preferring logs, sticks, and branches over traditional equipment.
- Improved or expanded playgrounds, including shaded areas, are commonly requested.
- Separate areas for younger and older children are appreciated, with some suggesting more accessible play options.
- The inclusion of a splash pad is a recurrent theme.

### Environmental Enhancements

- Shade for playgrounds and seating areas is frequently mentioned, along with the preservation of natural areas.
- Many comments focus on maintaining or increasing green spaces, planting more native trees, and creating rain gardens.
- There are also requests to keep the park's natural feel and not overload it with too many amenities.

### Restrooms

- Requests for more toilets and bathrooms, especially on the opposite end of the park near sports fields.

### Sports and Recreation

- There's interest in adding more sports facilities, such as baseball diamonds, pickleball courts, and fitness areas.
- Requests for preserving existing features like the sledding hill, shuffleboard courts, and open fields are noted.

### Pickleball Courts

- There's a strong demand for dedicated pickleball courts, separate from tennis.

### Benches and Picnic Areas

- More benches, picnic tables, and covered shelters are commonly suggested.

### Trails

- Nature trails, walking paths, and a small hiking trail are popular ideas, along with requests to maintain the forested area.

### Accessibility and Infrastructure

- Enhanced parking, especially environmentally friendly options, and additional restrooms are commonly suggested.
- Pathways and seating improvements, along with increased accessibility for people with disabilities, are emphasized.

### Community Spaces

- There's interest in gathering spaces, such as an amphitheater, picnic areas, and outdoor classrooms.
- Some also suggest automated learning stations or QR code-based educational experiences about local flora and fauna.



# Community Engagement - Spring 2025 (Phase 2)

In Person Feedback

## Let us know your thoughts!

Green Dot indicates a person's vote ●

### Aerial Looking Southwest



### Play Areas



### Nature Stage and Pavilion



### Interactive Wetland



# Community Engagement - Spring 2025 (Phase 2)

In Person Feedback

## Let us know your thoughts!

Green Dot indicates a person's vote ●

### Playground Option 1



PLAY OPTION 1 EQUIPMENT  
Timber Play Structures and Rubberized Play Surfacing



PLAY OPTION 1

### Playground Option 2



PLAY OPTION 2 EQUIPMENT  
Steel and Fabric Play Structures and Rubberized Play Surfacing



PLAY OPTION 2



PLAY OPTION 1



PLAY OPTION 1



PLAY OPTION 2



PLAY OPTION 2

# Community Engagement - Spring 2025 (Phase 2)

In Person Feedback

## Let us know your thoughts!

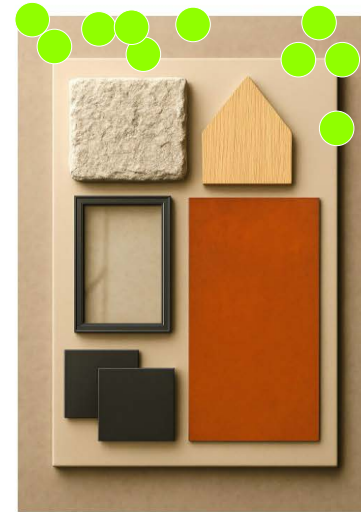
Green Dot indicates a person's vote ●

### Pavilion Materials Options



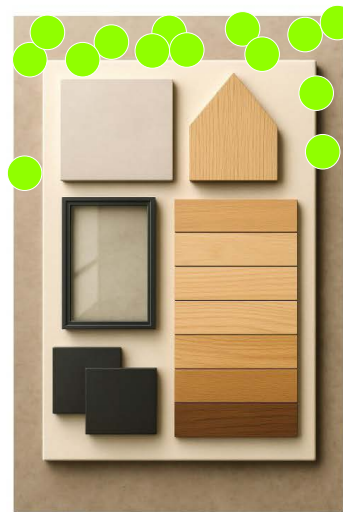
1. Clean & Traditional

A balanced mix of gray brick, dark metals, and cool horizontal siding - inspired by existing neighborhood park structures - creates a familiar palette. Storefront glass adds openness, blending durability with inviting warmth.



2. Stones & Steel

This palette pairs rugged split-face limestone with warm wood, sleek storefront glass, and durable weathered steel, balancing natural texture and industrial strength for a grounded, enduring material expression.



3. Sleek & Modern

This palette combines clean-lined materials, smooth concrete, warm-toned wood, and dark metal, with storefront glazing to create a contemporary, refined aesthetic rooted in simplicity and contrast.

### Pavilion A



### Pavilion B



### Pavilion C



Community Engagement - Spring 2025 (Phase 2)

In Person Feedback

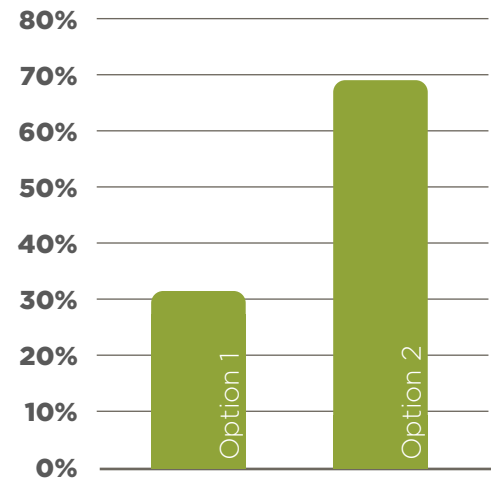
Let us know your thoughts!

Have additional comments? Grab a sticky note

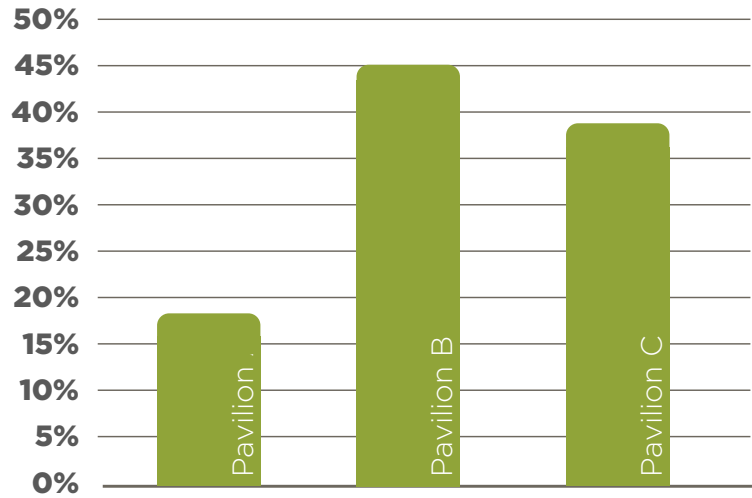


# Community Engagement - Spring 2025 (Phase 2)

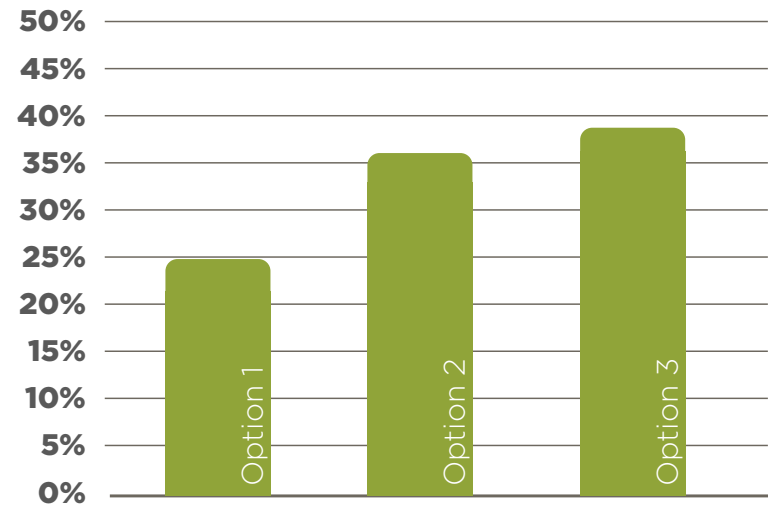
## Online Survey Results



Please select your preferred design between the following two playground alternatives:



Please rank the following park pavilion designs:



Please rank the following pavilion materials:



Option 1  
Timber Play Structures



Option 2  
Steel & Fabric Play Structures



Pavilion A  
Tall Hip Roof



Pavilion B  
Craftsman Roof



Pavilion C  
Single Pitch Roof



Option 1  
Clean & Traditional



Option 2  
Stones & Steel



Option 3  
Sleek & Modern

## Community Engagement - Spring 2025 (Phase 2)

### Online Survey Results

**602** total  
responses

**96%** of responses were  
UA residents

### Please share your thoughts on the following overall park master plan:

- Many respondents appreciate the inclusion of natural play areas, an amphitheater, and a four-season pavilion.
- Concerns were raised about the interactive wetland, with some fearing it could attract mosquitoes or pose a safety risk for children.
- Several commenters suggested adding more pickleball courts and basketball courts.
- There were mixed feelings about the amphitheater, with some questioning its necessity and potential noise impact on neighbors.
- Many emphasized the importance of maintaining green space and preserving existing trees.
- Suggestions included adding a splash pad instead of wetlands, ensuring ample parking, and improving pedestrian safety with better crosswalks and sidewalks.
- Some commenters expressed the need for more shaded areas, especially over play structures, and more accessible playground equipment for children with disabilities.
- Additional amenities like dog parks, water features, and picnic areas were also suggested by several respondents.

### Please share your thoughts on these park pavilion designs and materials.

- Many respondents prefer a design that blends with the natural surroundings and maintains a traditional, classic appearance.
- There is a significant preference for natural and earthy materials, such as wood and stone, which are perceived as warm and inviting.
- Several participants expressed concerns that sleek and modern designs may look dated over time.
- Option 3, with its lower roof profile and natural wood aesthetic, received positive feedback for its ability to blend into the park environment.
- Options 2 and 3 were favored for their modern design elements and extensive use of glass, providing a bright and open feel.
- Some respondents disliked the use of gray tones and excessive modernity, associating these with trends that might quickly become outdated.
- Participants appreciated designs that are functional, sustainable, and provide ample natural light.
- There were also specific preferences for the durability and maintenance requirements of the materials used.

### Please share your thoughts on why you selected one versus the other and provide any other input on desired playground elements.

- Preference for natural look: Many respondents preferred the timber structures for their natural appearance and ability to blend with the park's surroundings.
- Concerns about durability: There were worries about the longevity and maintenance of timber structures, including potential issues with splinters and weather damage.
- Variety and engagement: Option 2, the steel and fabric structures, was favored for its variety of play elements, perceived durability, and shaded areas.
- Safety considerations: Some respondents mentioned the importance of safety features, such as avoiding splinters and providing shaded areas to prevent equipment from getting too hot.
- Inclusive play: There was an emphasis on the importance of inclusive play options, ensuring that children of all abilities can enjoy the playground.
- Preference for existing features: Several respondents expressed a preference for maintaining the current playground features, which they found to be excellent and well-suited for a wide age range.
- Mixed feelings about both options: Some respondents had mixed feelings, appreciating aspects of both options, but also expressing concerns about each.



# Site Plan Enlargement

September 2024 Plan



### PARK ELEMENTS LEGEND

- 1 Existing Parking Lot (42 Spaces)
- 2 Four-Season Pavilion
- 3 Open-Air Shelter
- 4 Satellite Maintenance Area (Relocation of Existing in Park Maintenance)
- 5 Playground
- 6 Story Book Walk
- 7 Nature Play Area
- 8 Woodland Path
- 9 Meadow Buffer
- 10 Interactive Wetland
- 11 Existing Athletic Fields
- 12 Park Plaza
- 13 Tennis & Pickleball Courts
- 14 Pollinator Meadow
- 15 Nature Stage
- 16 Trash / Recycling Enclosure
- 17 Compost Drop-off



# Site Plan Enlargement

June 2025 Plan



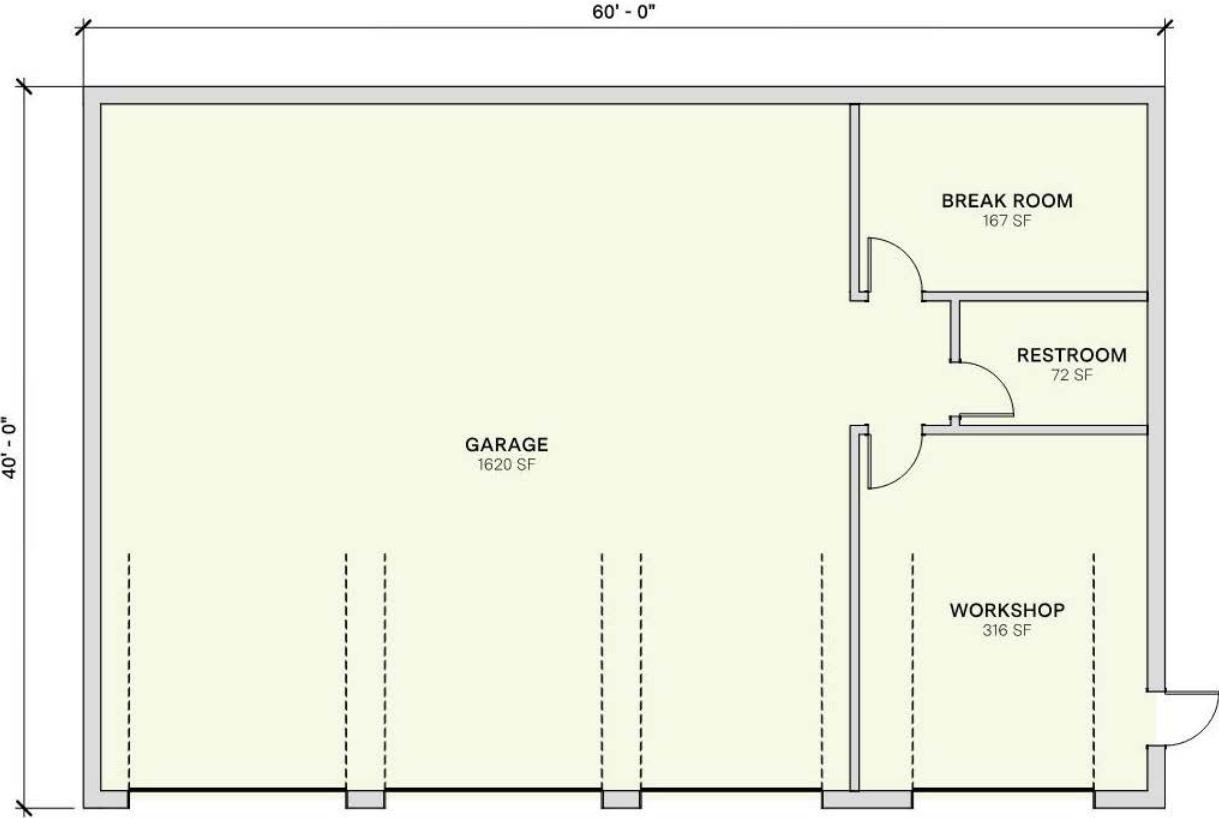
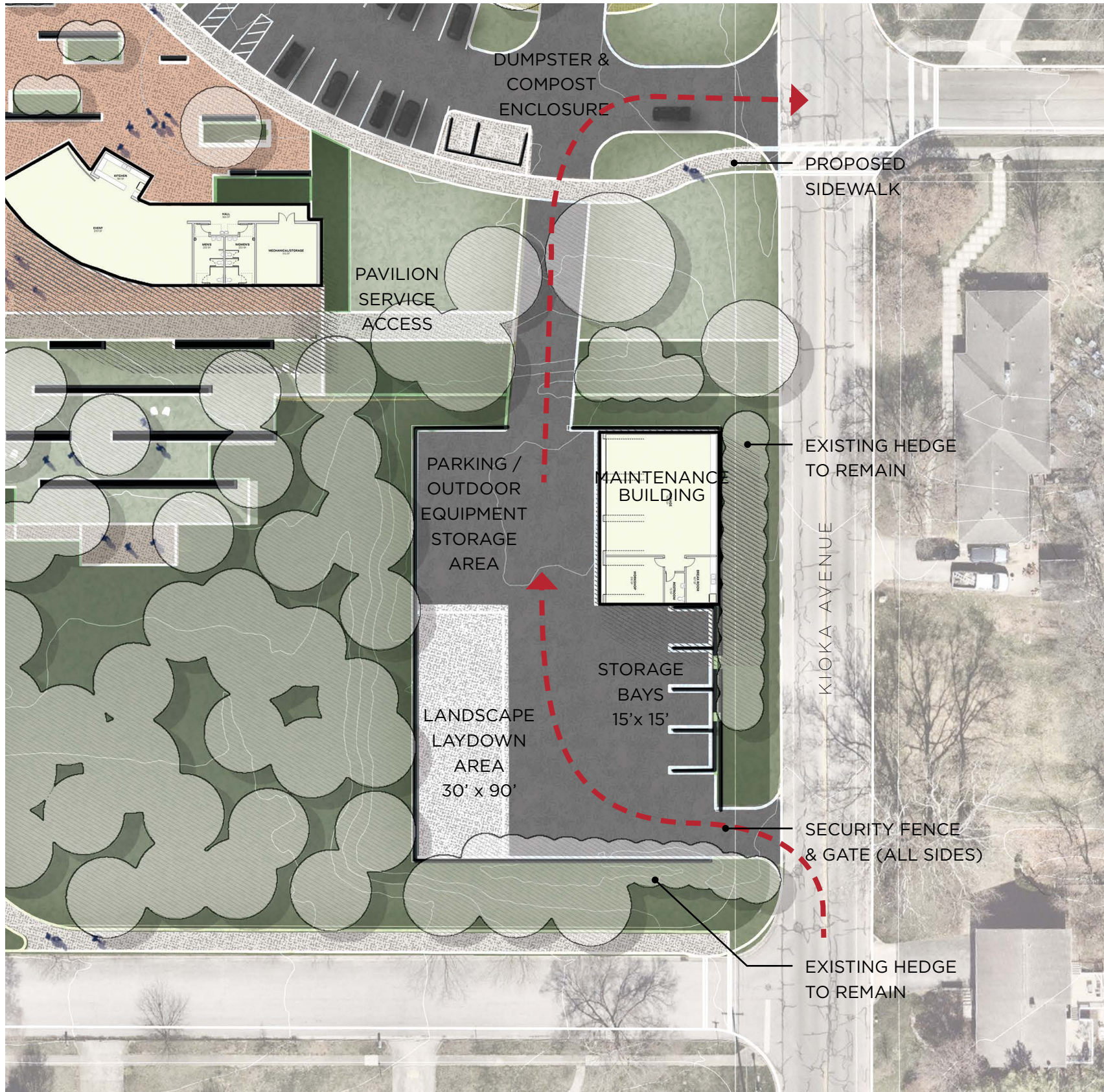
### PARK ELEMENTS LEGEND

- 1 Parking Lot (88 Spaces)
- 2 Four-Season Pavilion
- 3 Open-Air Shelter
- 4 Stormwater Detention Area
- 5 Satellite Maintenance Area (Relocation of Existing in Park Maintenance)
- 6 Playground
- 7 Story Book Walk
- 8 Nature Play Area
- 9 Woodland Path
- 10 Meadow Buffer
- 11 Interactive Wetland
- 12 Renovated Athletic Fields
- 13 Park Plaza
- 14 Tennis Courts
- 15 Pickleball Courts
- 16 Courts Hitting Wall
- 17 Bioswale (in parking lot)
- 18 Pollinator Meadow
- 19 Nature Stage
- 20 Trash / Recycling Enclosure
- 21 Compost Drop-off



# Satellite Maintenance Area (Phase I)

Relocation of Existing in Park Maintenance

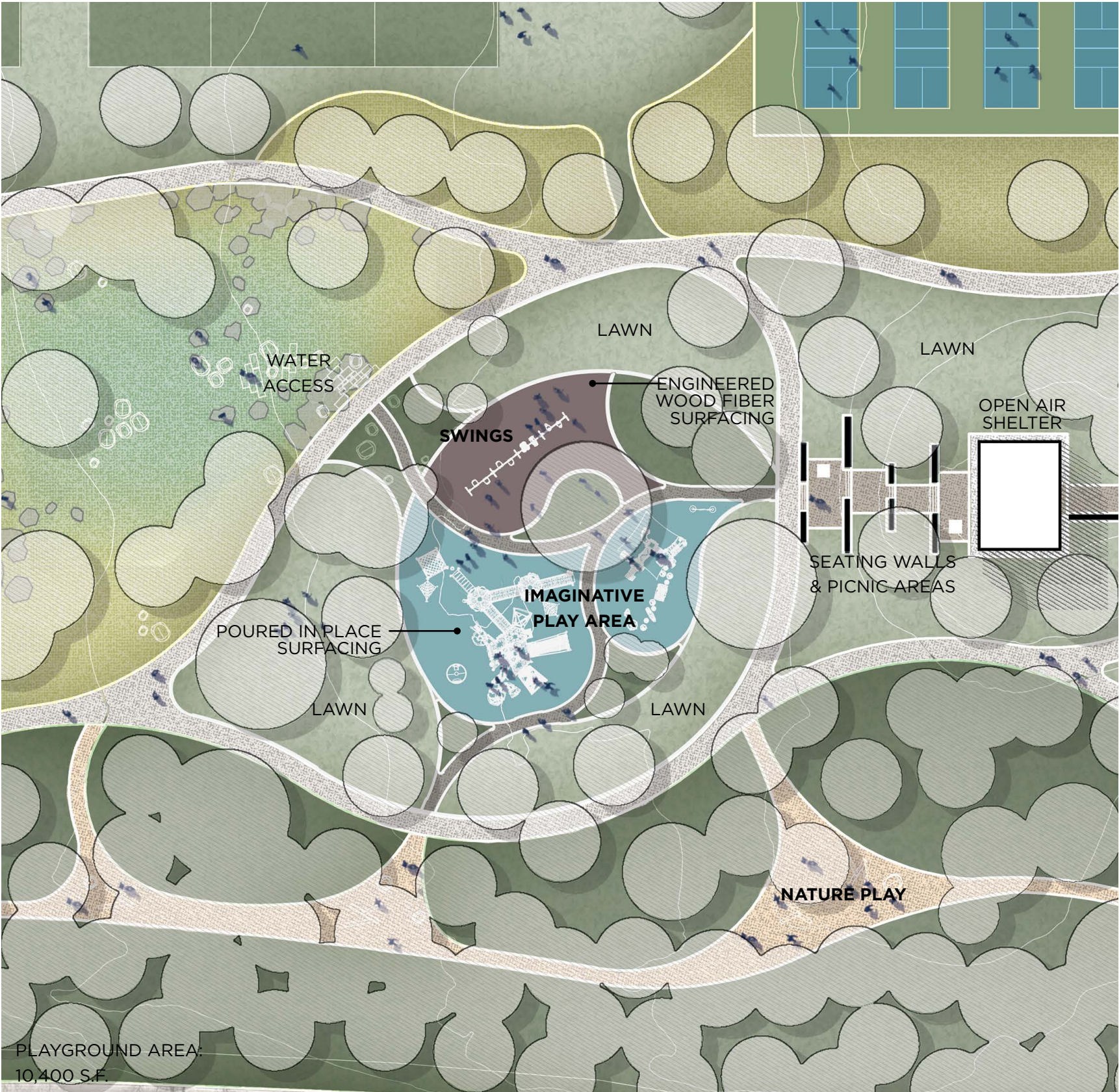


Service Building Concept Plan



Satellite Maintenance Area (Wickliffe / Kioka)

Playground (Phase II)



**Playground (Phase II)**  
Imaginative Play Area: Age 2-5



**Playground (Phase II)**  
Imaginative Play Area: Age 5-12

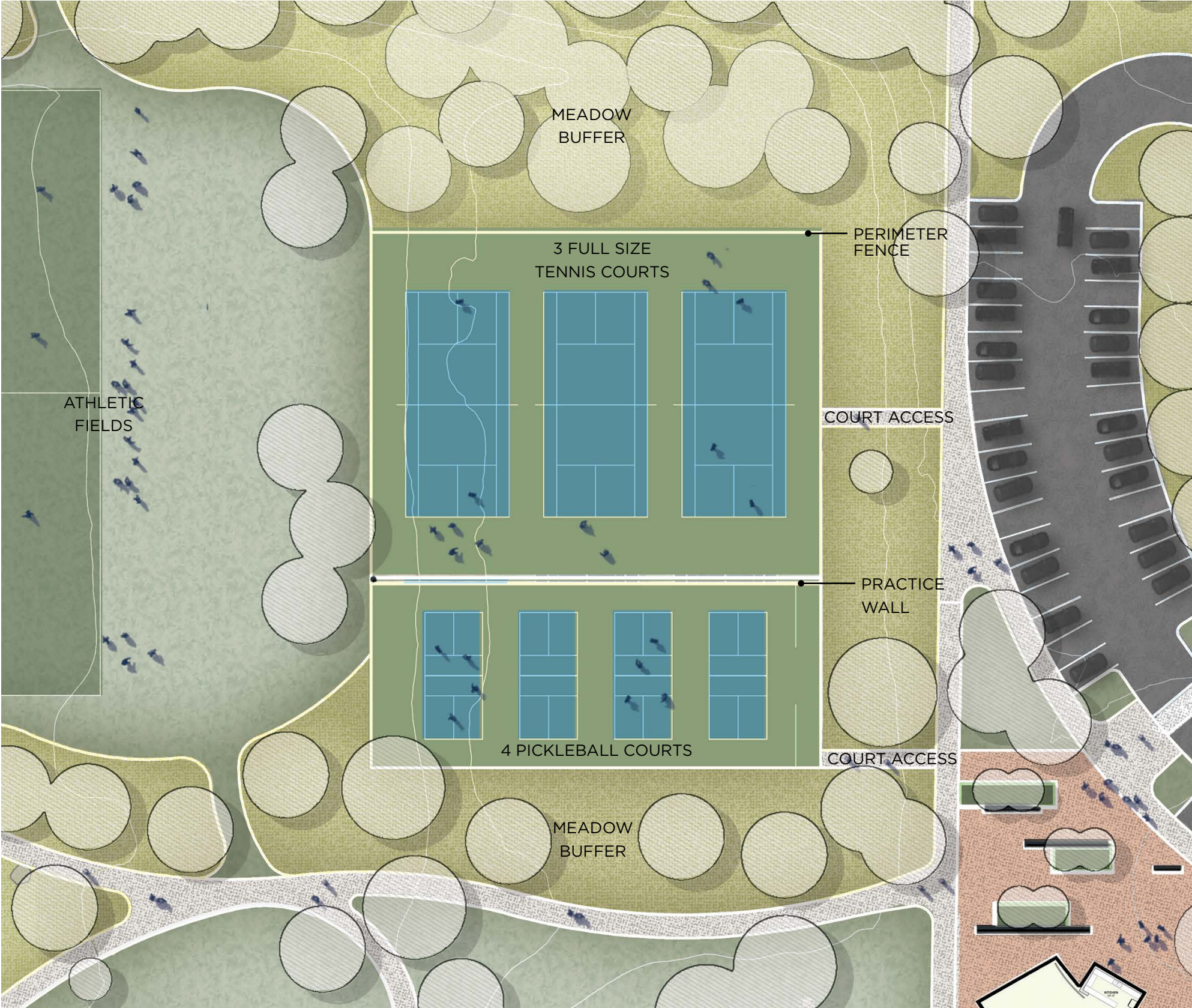


# Playground (Phase II)

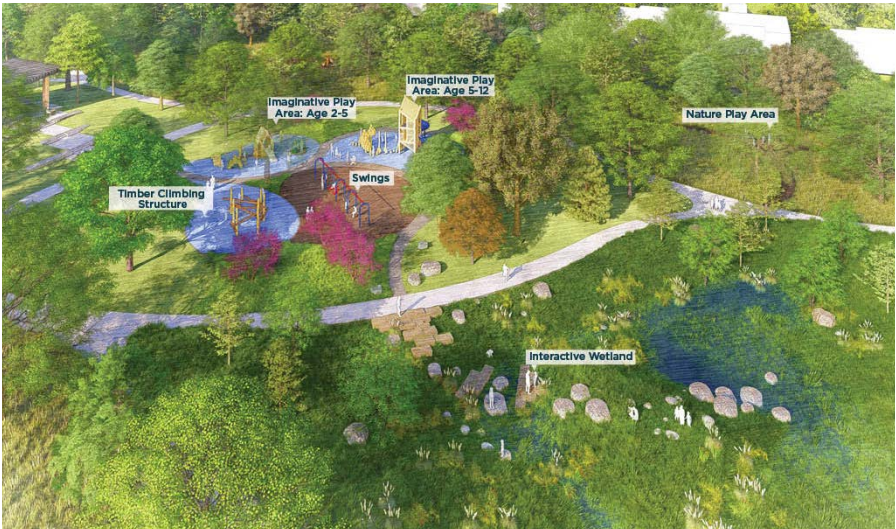
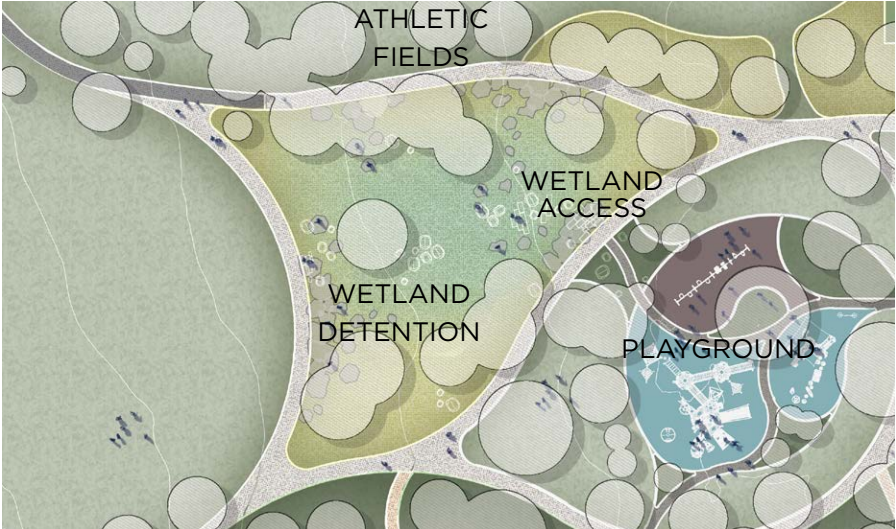
## Swings



# Tennis & Pickleball (Phase II)



Interactive Wetland (Phase II)

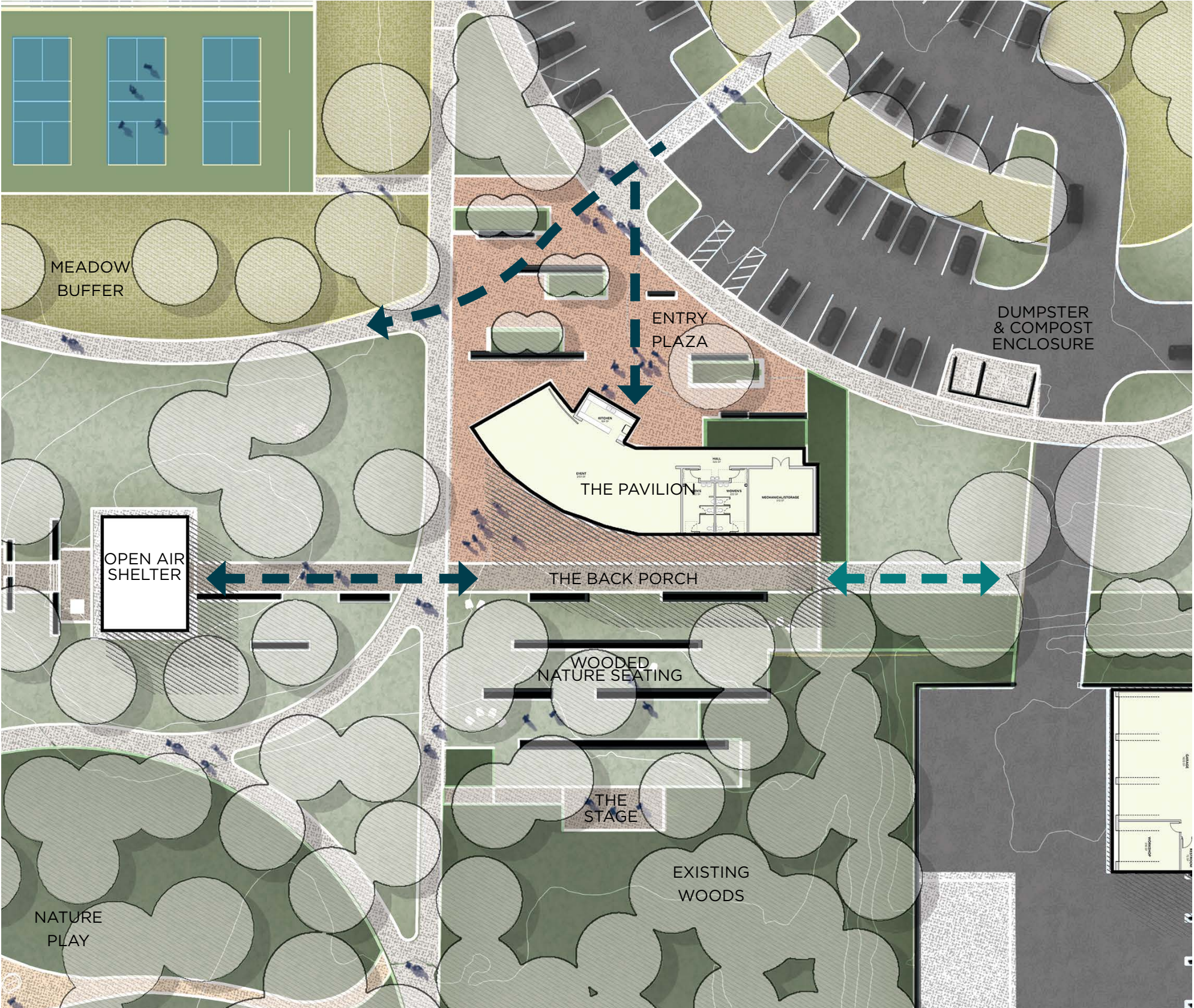


Parking (Phase III)

EXISTING SPACES: 42  
 PROPOSED SPACES: 88

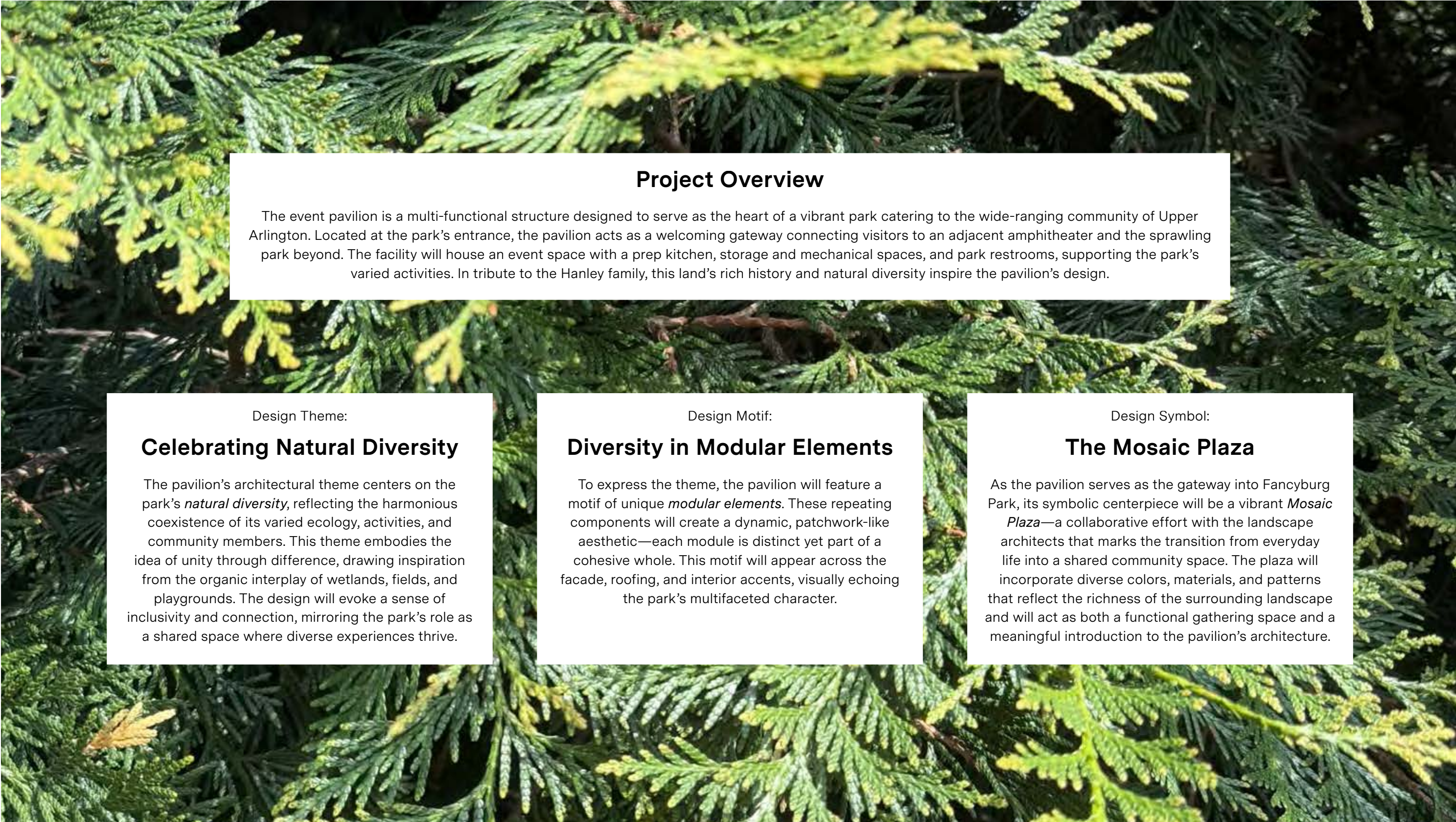


Four Season Pavilion (Phase III)



# Four Season Pavilion (Phase III)

## Architecture Overview



### Project Overview

The event pavilion is a multi-functional structure designed to serve as the heart of a vibrant park catering to the wide-ranging community of Upper Arlington. Located at the park’s entrance, the pavilion acts as a welcoming gateway connecting visitors to an adjacent amphitheater and the sprawling park beyond. The facility will house an event space with a prep kitchen, storage and mechanical spaces, and park restrooms, supporting the park’s varied activities. In tribute to the Hanley family, this land’s rich history and natural diversity inspire the pavilion’s design.

Design Theme:

### Celebrating Natural Diversity

The pavilion’s architectural theme centers on the park’s *natural diversity*, reflecting the harmonious coexistence of its varied ecology, activities, and community members. This theme embodies the idea of unity through difference, drawing inspiration from the organic interplay of wetlands, fields, and playgrounds. The design will evoke a sense of inclusivity and connection, mirroring the park’s role as a shared space where diverse experiences thrive.

Design Motif:

### Diversity in Modular Elements

To express the theme, the pavilion will feature a motif of unique *modular elements*. These repeating components will create a dynamic, patchwork-like aesthetic—each module is distinct yet part of a cohesive whole. This motif will appear across the facade, roofing, and interior accents, visually echoing the park’s multifaceted character.

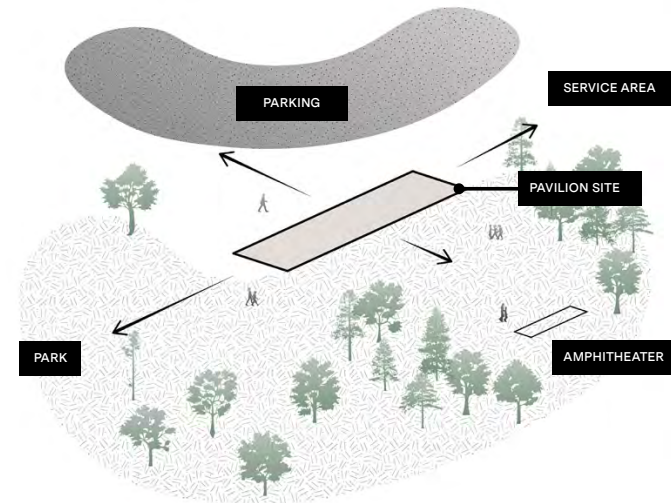
Design Symbol:

### The Mosaic Plaza

As the pavilion serves as the gateway into Fancyburg Park, its symbolic centerpiece will be a vibrant *Mosaic Plaza*—a collaborative effort with the landscape architects that marks the transition from everyday life into a shared community space. The plaza will incorporate diverse colors, materials, and patterns that reflect the richness of the surrounding landscape and will act as both a functional gathering space and a meaningful introduction to the pavilion’s architecture.

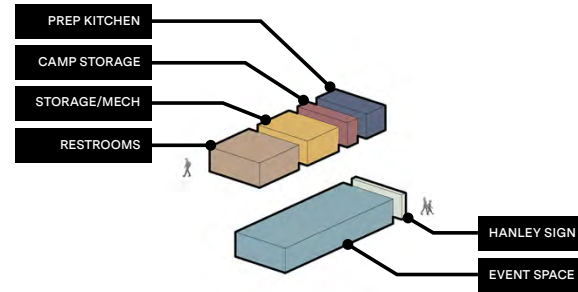
# Four Season Pavilion (Phase III)

## Concept Diagrams



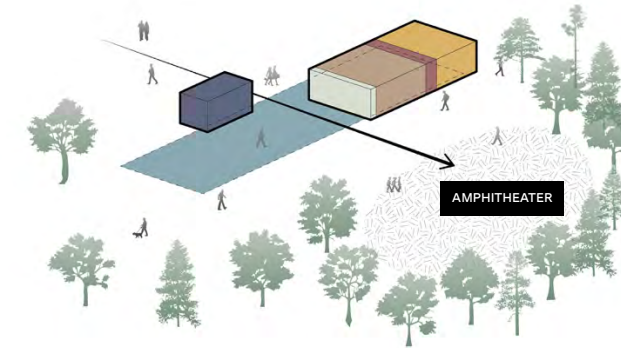
Orientation

The event pavilion is perfectly located at the entry to the park. The pavilion site sits at the center of the activity, acting as a hub to help visitors and park staff transition from parking to amphitheater, or service area to the greater park beyond.



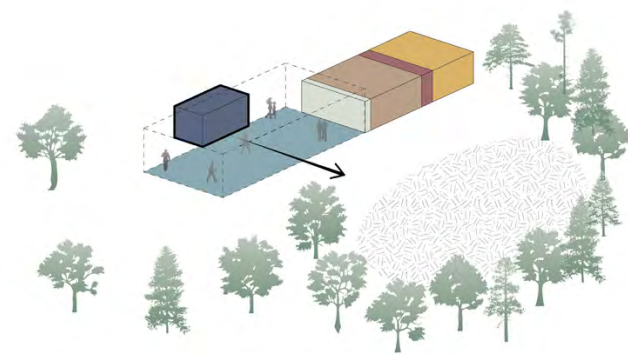
Program

The event pavilion will be an efficient structure housing program spaces to support the greater park including public restrooms, storage and mechanical space, camp storage space, a prep kitch, a large event space, and signage in tribute to the Hanley family.



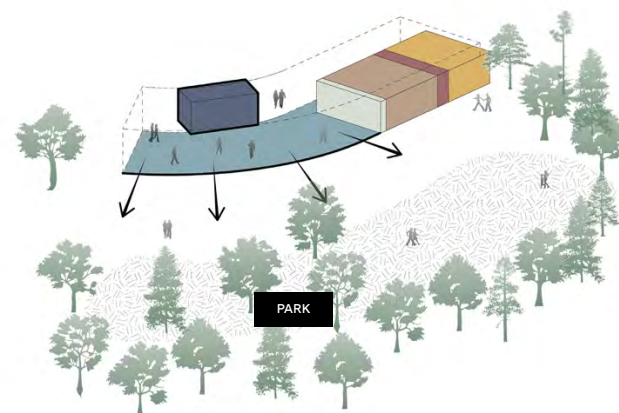
Gateway

The program spaces are combined into blocks and positioned in such a way to create a gateway that frames the amphitheater and park space beyond the pavilion. The gateway creates clear entry and guides the primary circulation route through the pavilion.



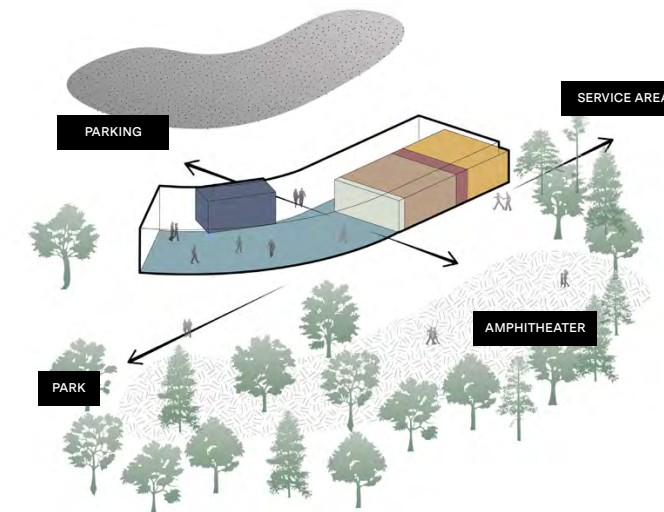
Events

The prep kitchen acts as both the edge of the gateway and the anchor for the event space. The kitchen massing is centered on the event space and acts as a back-drop providing support for camps, community events, and various rental programming within the space.



Panorama

In concert with the dynamic nature of the park, the event space bends to provide a wider panorama for viewing the park from the event space. Leaving the event space open and surrounded by glass, the interior of the pavilion becomes part of the park itself.

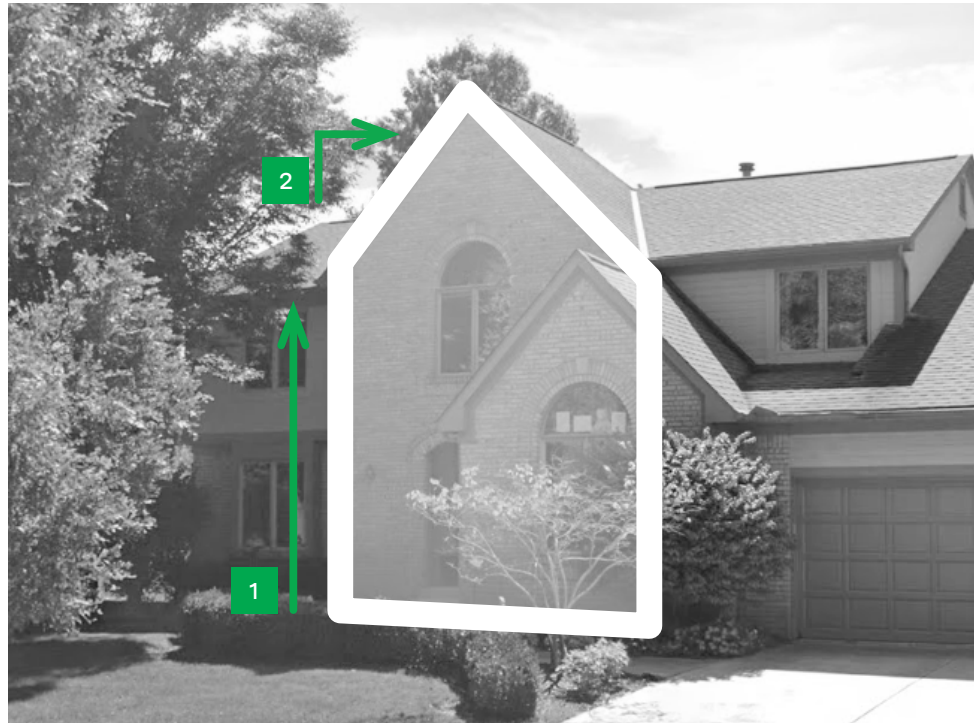


Connections

The pavilion becomes a space where the natural diversity of the park and the community takes center stage. With direct connections to parking, service areas, the adjacent amphitheater, and the park beyond, the pavilion provides the flexibility to serve the community for any occasion.

# Four Season Pavilion (Phase III)

## Massing Development



Traditional

One formal language observed repeatedly throughout the community is the traditional English style residence. This form features tall elevations and steeply pitched roofs that can accommodate more active spaces within where higher ceilings are favored.



Craftsman

A second formal language observed throughout the community is the craftsman style residence. This form features long elevations with shallow roof pitches that create a more comfortable interior environment and help blend the building more seamlessly into the landscape.



Modern

A third formal language not observed throughout the community is the modern style residence. This form features a simple single pitched roof that can accommodate flexible spaces with higher and lower ceilings where the roof pitch can help focus views to the surrounding landscape.



Pavilion A - Tall Hip Roof



Pavilion B - Craftsman Roof



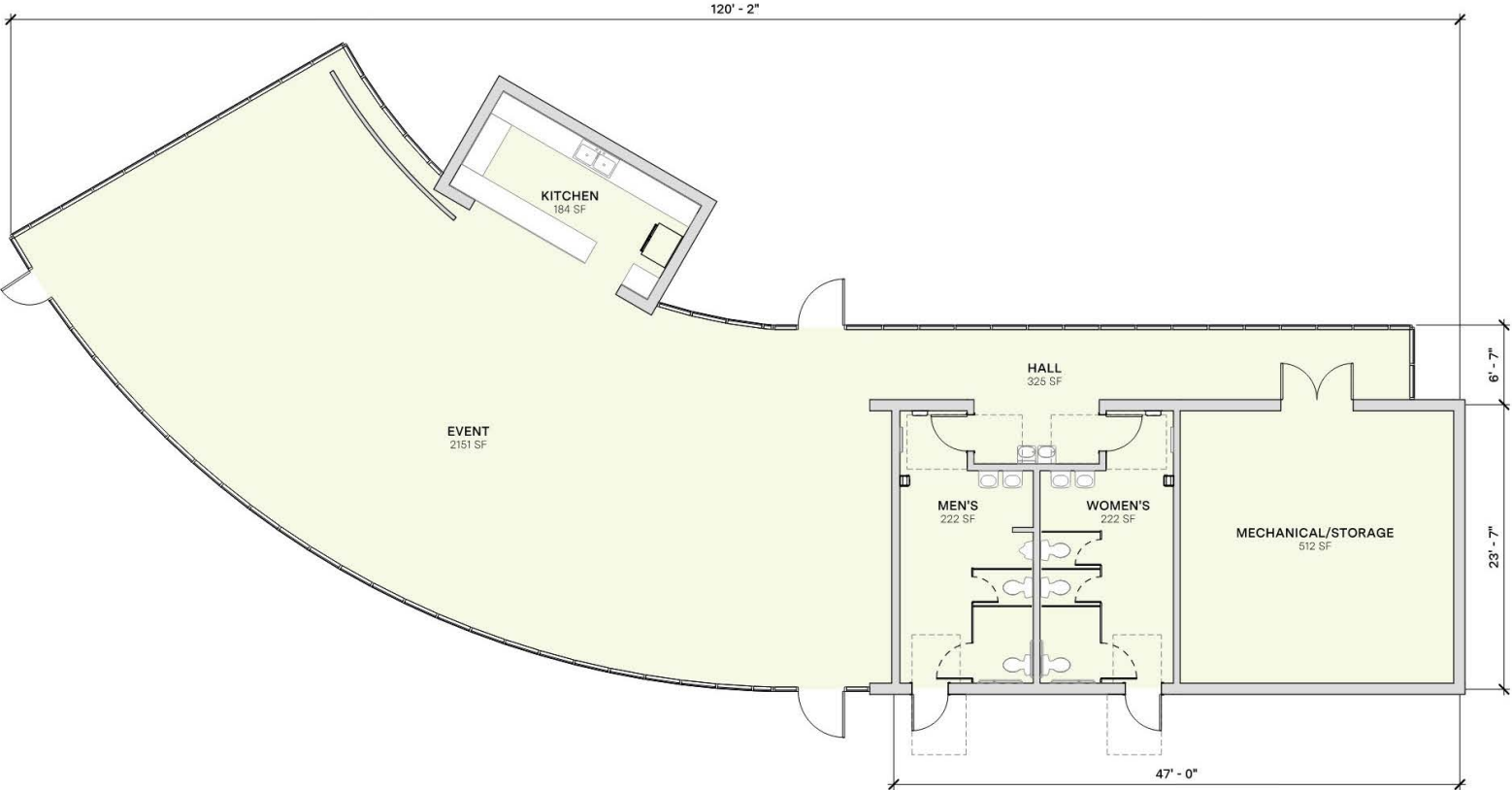
Pavilion C - Single Pitch Roof

Four Season Pavilion (Phase III)



3. Sleek & Modern

This palette combines clean-lined materials, smooth concrete, warm-toned wood, and dark metal, with storefront glazing to create a contemporary, refined aesthetic rooted in simplicity and contrast.



# Site Plan Enlargement

June 2025 Plan



### PARK ELEMENTS LEGEND

- 1 Parking Lot (88 Spaces)
- 2 Four-Season Shelter
- 3 Open-Air Shelter
- 4 Stormwater Detention Area
- 5 Satellite Maintenance Area (Relocation of Existing in Park Maintenance)
- 6 Playground
- 7 Story Book Walk
- 8 Nature Play Area
- 9 Woodland Path
- 10 Meadow Buffer
- 11 Expanded Nature Play
- 12 Renovated Athletic Fields
- 13 Park Plaza
- 14 Tennis Courts
- 15 Pickleball Courts
- 16 Courts Hitting Wall
- 17 Bioswale (in parking lot)
- 18 Pollinator Meadow
- 19 Nature Stage
- 20 Trash / Recycling Enclosure
- 21 Compost Drop-off
- 22 Sidewalk
- ← Pedestrian Access





# Table of Contents

- 1** Introduction .....3
- 2** Existing Conditions .....5
  - Location..... 6
  - Existing Infrastructure ..... 7
  - Existing Site Elements ..... 8
  - Existing Passive Recreation..... 9
  - Existing Active Recreation..... 10
- 3** Community Engagement..... 11
  - Fall 2024 (Phase 1).....12
  - Spring 2025 (Phase 2).....18
- 4** Park Master plan..... 25
  - Site Plan.....26
  - Park Features .....29
  - Four Season Shelter .....36
- 5** Next Steps ..... 41
  - Schedule.....42

## Introduction

Why a Master Plan for Fancyburg Park?

- Renovation of Northam Park completed in 2025 and Devon Pool in 2026 after multiple phases of construction
- Fancyburg will be the next capital focus after these facilities
- Several amenities in Fancyburg are nearing the end of their service life including the playground, shelter, shuffleboard courts, and maintenance yard
- Fancyburg is loved for its open spaces and natural areas, but there is a need to bring amenities up to current standards (year round restrooms, safe paths, functional parking)
- City recognizes the importance of having consensus on necessary improvements and a clear plan for implementation



## Master Plan

EDGE, a Columbus-based landscape architecture and urban design firm, has been contracted by Upper Arlington Parks & Recreation to undertake the master planning process for Fancyburg Park.

Throughout the visioning process, Upper Arlington Parks & Recreation will be focused on improving the park's amenities while still preserving the unique character of this popular destination for residents and neighbors. The City of Upper Arlington will be closely following the 2018 Parks & Recreation Comprehensive Plan that was adopted to serve as a guide on future decision-making on how to get the most value from the City's limited park land and the facilities within them, while fulfilling residents' recreational wants and needs.

## The Process

Launched in the fall of 2024, the first phase included a detailed study of existing conditions and uses in the park, accompanied by a community engagement process that measured residents' thoughts on the current facilities and gathered ideas for potential improvements. The next phase of planning, taking place in spring and summer 2025, will focus on gathering additional community input to help refine the Master Plan for the park.

EDGE will then develop concepts for park improvements that will be shared with the community before proceeding to the final design. Funding for improvements to the park are scheduled within the 2027 and 2028 Parks Capital Improvements Program.

## The Goal

The goal of the park master plan is to enhance Fancyburg's versatility and appeal, ensuring it remains a welcoming space for all community members by blending recreational opportunities with the beauty of its natural surroundings.

Planning will continue in 2025, as more detailed concepts are developed, along with additional opportunities for public input. The park is scheduled for renovation in 2027 and 2028.



# Existing Conditions



Location



# Existing Infrastructure



Existing Satellite Maintenance Area  
*Equipment Storage Lot*



Parking Lot  
*49 Spaces in East Lot / 43 Spaces in West Lot*



Shelter & Seasonal Restrooms  
*Garage Door Openings / Two (2) Single Use Restrooms*



On Site Well  
*West of Soccer Fields*



Bus Stop  
*Kioka Avenue*



Community Compost Drop-off  
*East Parking Lot*

## Existing Site Elements



Park Signage  
*Sunset Drive*



Bicycle Parking  
*West of Soccer Fields*



Flag Pole



Litter / Recycling Receptacles



Various Benches / Picnic Tables



Drinking Fountain

# Existing Passive Recreation



Internal Walking Paths



Exterior Multiuse Path



Small Seating Areas



Woodland Area



Nature Paths



Storybook Walk

# Existing Active Recreation



Playground  
*9,900 S.F.: 2-5 Zone, 5-12 Tower, Mixed Ground Play, 4 Swings*



Nature Play Area



Shuffle Board Courts



Baseball / Softball Fields



Pickleball / Tennis Courts



Boulder Wall

# Community Engagement



# Community Engagement

## Process

### Phase I

The first phase of community outreach for the renovation of Fancyburg Park returned valuable insights and countless thoughtful neighborly conversations.

Step One consisted of two open houses: one at the August 6th National Night Out in Fancyburg Park and a second at the August 7th Upper Arlington Farmer's Market at the Tremont Center. Visitors were asked to vote on their preferred park amenities as well as provide any additional thoughts and ideas on how to improve Fancyburg Park.

Step Two consisted of an online survey, compiled by EDGE and Upper Arlington Parks & Recreation staff and distributed via their email database. Similar questions to the open houses were posed, gathering feedback on amenities and preferences. Over 900 survey responses were recorded.

### Phase I Outreach

- National Night Out
- Farmer's Market
- Online Survey
- PRAB Meeting
- City Council

### Phase II

Phase II of the master planning process engaged residents via additional open houses and a second survey. Upper Arlington Parks & Recreation staff as well as members of the design team held an open house at the Fancyburg Park shelter on May 7, and Parks and Recreation Staff also displayed project boards and answered questions at the Spring Fling at Sunny 95 Park. Residents were asked to assist with design decisions regarding the playground and park pavilion, in addition to gather their general thoughts and input on the overall park master plan. A second online survey was also released, garnering over 600 responses.

### Phase II Outreach

- Spring Fling
- Fancyburg Park Open House
- Online Survey
- PRAB Meeting
- City Council



# Community Engagement - Fall 2024 (Phase 1)

## In Person Feedback

### Play Character



THEMED PLAY STRUCTURES



ROPE STRUCTURES



PLAY TOWERS



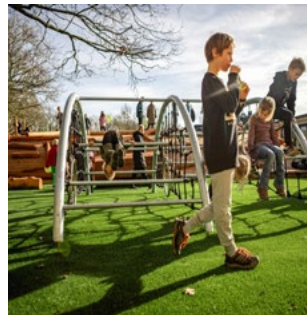
MUSICAL PLAY EQUIPMENT



LOG CLIMBERS



TREE HOUSE

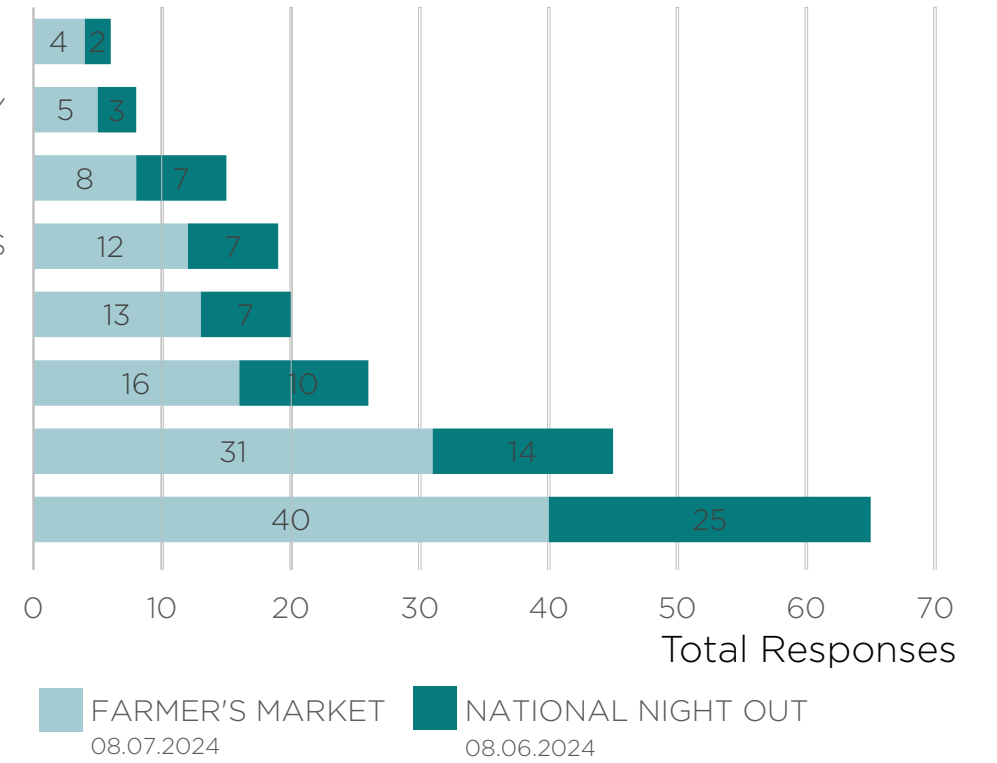


GROUND / ACCESSIBLE PLAY



NATURE PLAY

- MUSICAL PLAY EQUIPMENT
- GROUND / ACCESSIBLE PLAY
- ROPE STRUCTURES
- LOG CLIMBERS
- PLAY TOWERS
- THEMED PLAY STRUCTURES
- NATURE PLAY
- TREE HOUSE



### Architecture Character



OPEN AIR SHELTER (TRADITIONAL)



SHADE STRUCTURES



OPEN AIR SHELTER (GEOMETRIC)



FOUR SEASON PAVILION (MODERN)

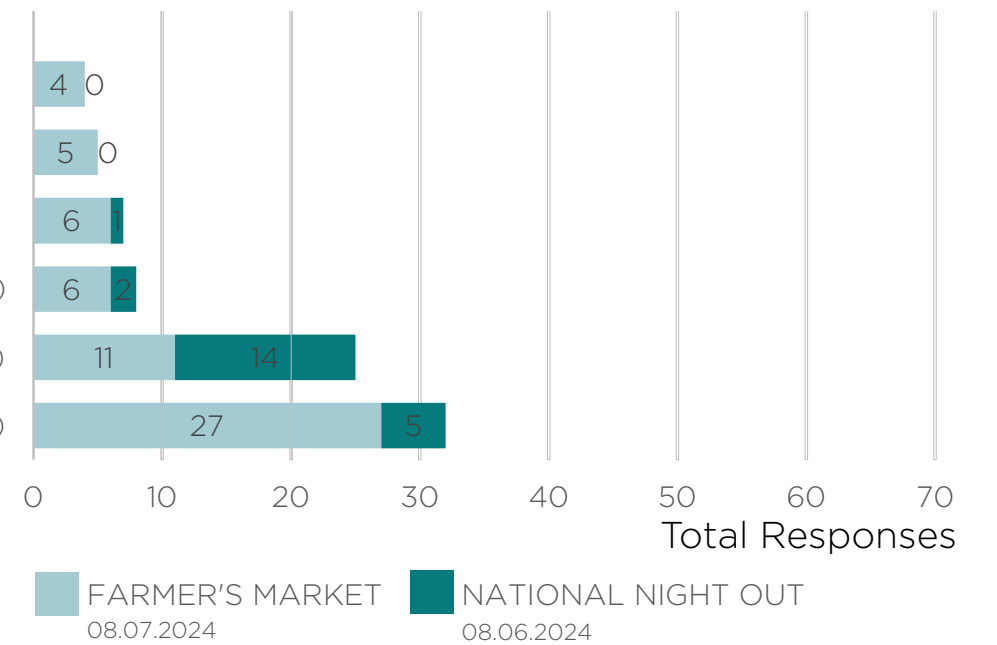


FOUR SEASON PAVILION (TRADITIONAL)



PUBLIC MURALS

- OPEN AIR SHELTER (GEOMETRIC)
- SHADE STRUCTURES
- PUBLIC MURALS
- OPEN AIR SHELTER (TRADITIONAL)
- FOUR SEASON PAVILION (TRADITIONAL)
- FOUR SEASON PAVILION (MODERN)



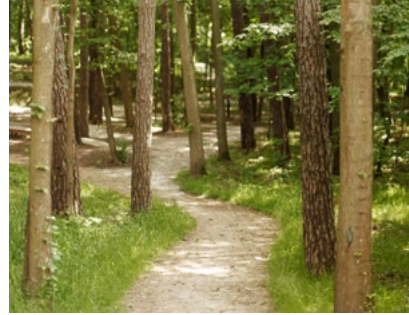
# Community Engagement - Fall 2024 (Phase 1)

## In Person Feedback

### Passive Recreation Activities



NATURE PATH / BOARDWALK



WOODLAND PATH



POLLINATOR MEADOW



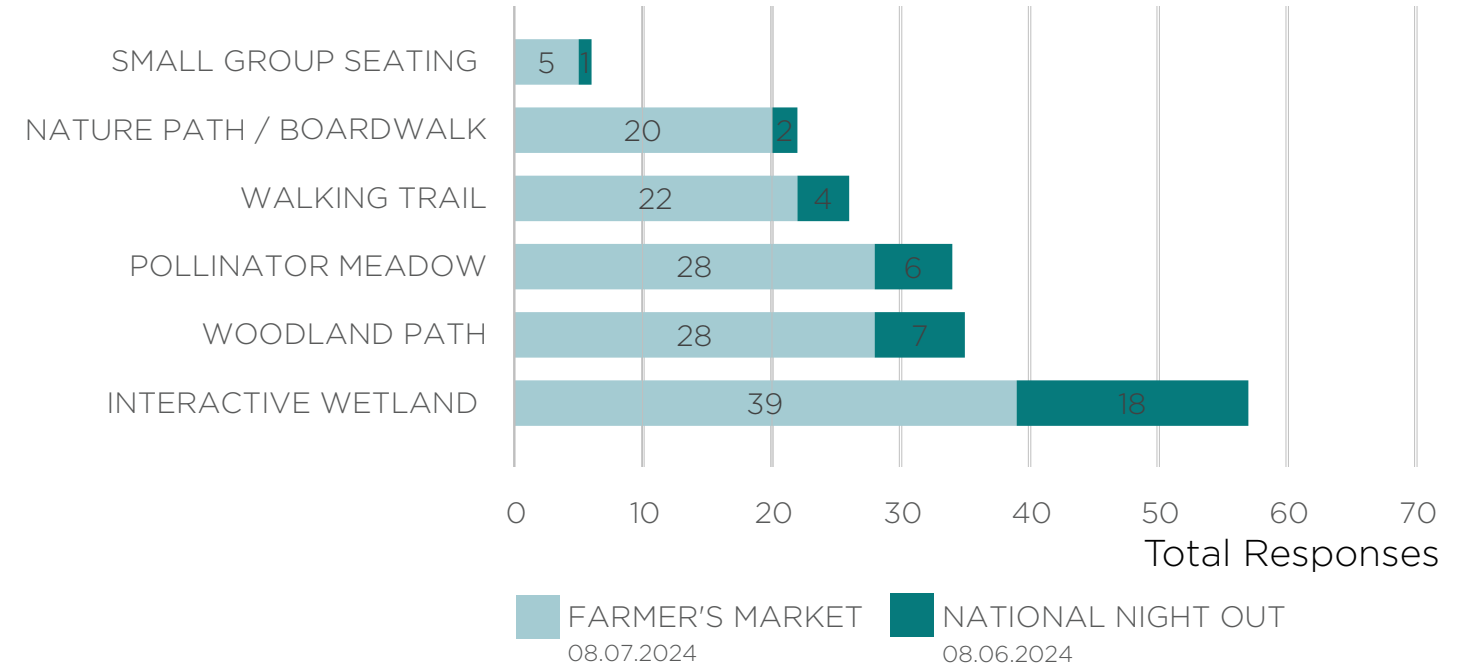
WALKING TRAIL



INTERACTIVE WETLAND



SMALL GROUP SEATING



### Active Recreation Activities



BASEBALL / SOFTBALL



TENNIS



MEASURED RUN / WALK ROUTES



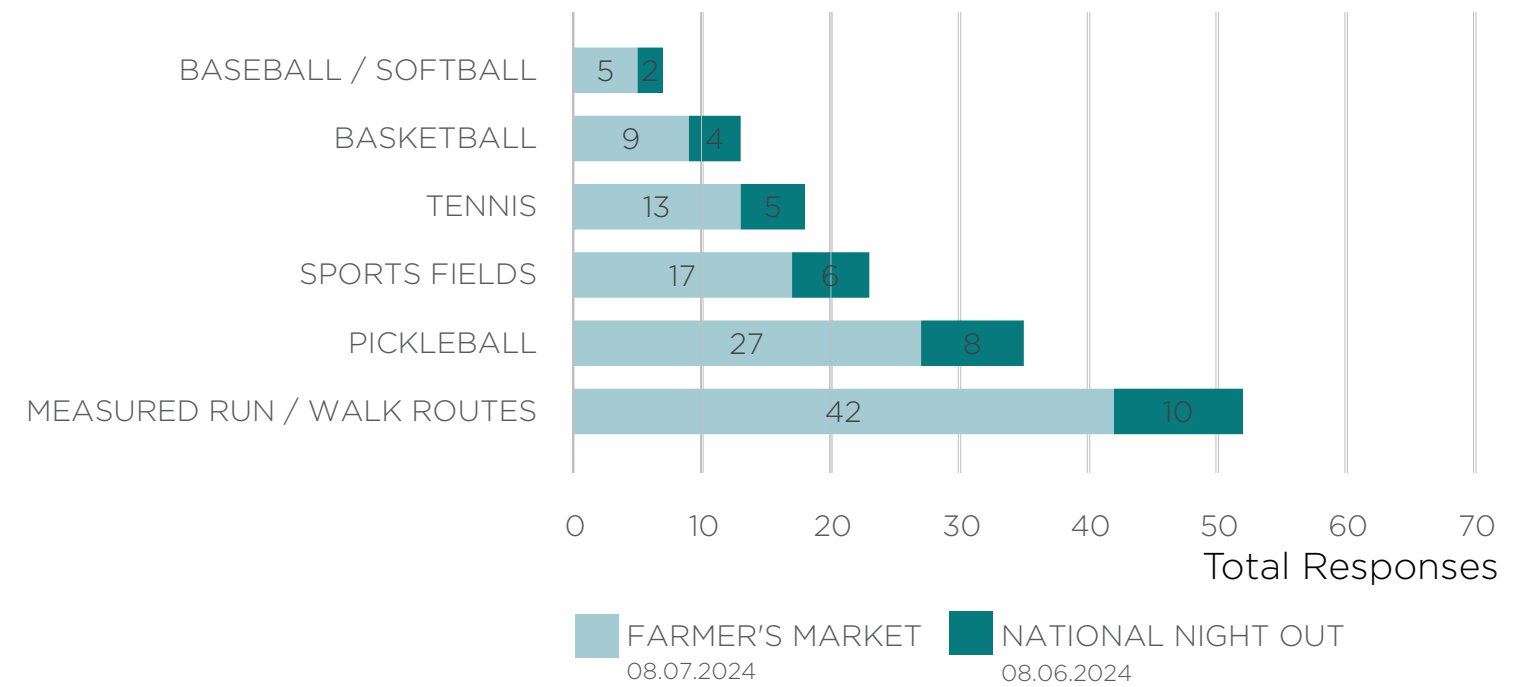
BASKETBALL



SPORTS FIELDS



PICKLEBALL



# *Tell us what you would like to see at Fancyburg Park*



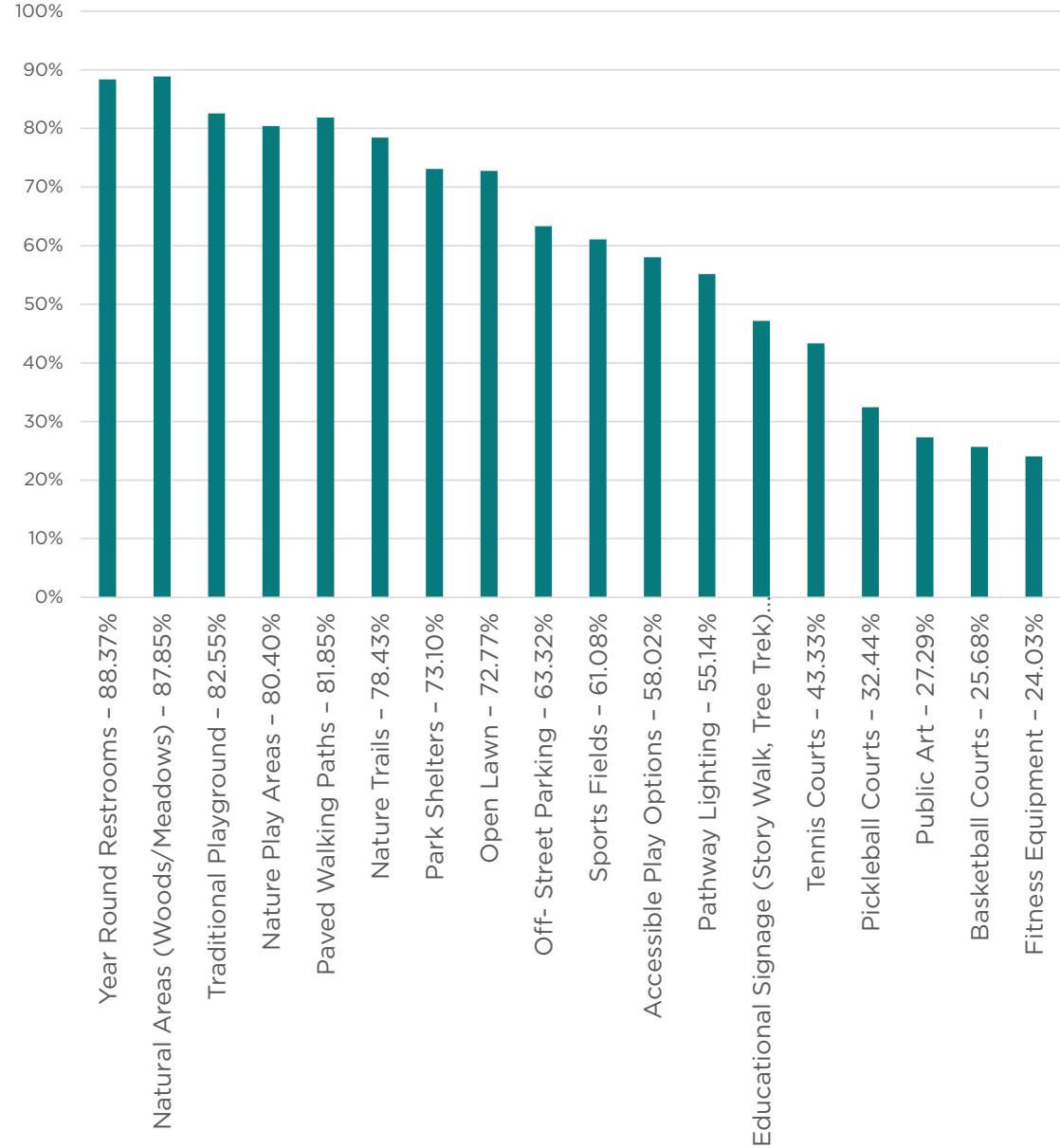
# Community Engagement - Fall 2024 (Phase 1)

Online Survey Results

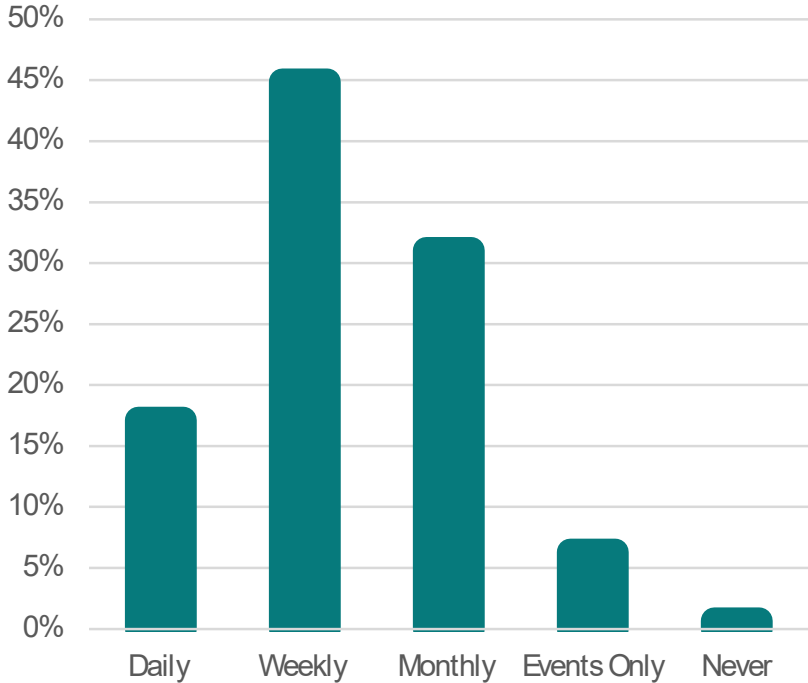
**905** total responses

**97%** of responses were UA residents

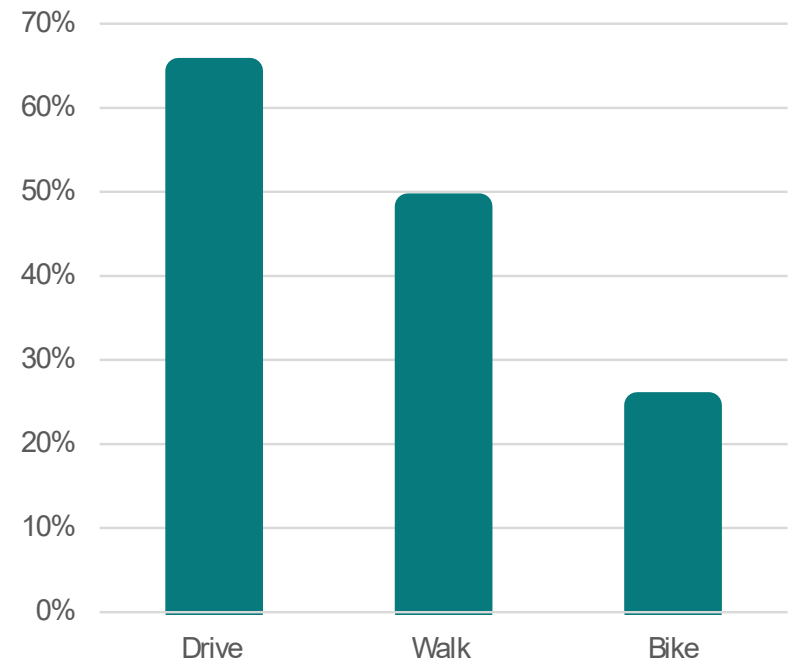
## Please share your level of interest in each of these possible amenities:



## How often do you visit Fancyburg Park?



## How do you and/or your family typically get to Fancyburg Park? (Select all that apply)



# Community Engagement - Fall 2024 (Phase 1)

## Top Takeaways

### Public Input

- More restrooms
- Maintain green space - don't overload it with amenities
- More native trees and pollinator plants
- Dog water fountains and waste bag stations
- Natural play elements
- Expanded playground, with plenty of shade, more swings, and accessible play features
- Strong demand for dedicated pickleball courts, separate from Tennis
- More benches, picnic tables, and covered shelters for shade
- More nature trails - maintain the forested area
- More parking to reduce demand for on-street parking
- More community gathering spaces, such as an amphitheater and picnic areas
- Maintain and improve the StoryWalk and Tree Trek

### Functional Requirements

- Improved Maintenance Facility to support existing park uses
- Simplified truck access for plant deliveries
- Improved athletic field drainage
- Additional location for Day Camp
- Analyze functionality and capacity of current parking layout



# Community Engagement - Spring 2025 (Phase 2)

In Person Feedback

## Let us know your thoughts!

Green Dot indicates a person's vote ●

### Aerial Looking Southwest



### Play Areas



### Nature Stage and Four-Season Shelter



### Expanded Nature Play



# Community Engagement - Spring 2025 (Phase 2)

In Person Feedback

## Let us know your thoughts!

Green Dot indicates a person's vote ●

### Playground Option 1



PLAY OPTION 1 EQUIPMENT  
Timber Play Structures and Rubberized Play Surfacing



PLAY OPTION 1

### Playground Option 2



PLAY OPTION 2 EQUIPMENT  
Steel and Fabric Play Structures and Rubberized Play Surfacing



PLAY OPTION 2



PLAY OPTION 1



PLAY OPTION 1



PLAY OPTION 2



PLAY OPTION 2

# Community Engagement - Spring 2025 (Phase 2)

In Person Feedback

## Let us know your thoughts!

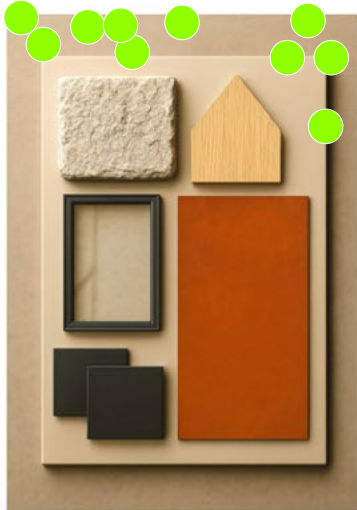
Green Dot indicates a person's vote ●

### Shelter Materials Options



1. Clean & Traditional

A balanced mix of gray brick, dark metals, and cool horizontal siding - inspired by existing neighborhood park structures - creates a familiar palette. Storefront glass adds openness, blending durability with inviting warmth.



2. Stones & Steel

This palette pairs rugged split-face limestone with warm wood, sleek storefront glass, and durable weathered steel, balancing natural texture and industrial strength for a grounded, enduring material expression.



3. Sleek & Modern

This palette combines clean-lined materials, smooth concrete, warm-toned wood, and dark metal, with storefront glazing to create a contemporary, refined aesthetic rooted in simplicity and contrast.

### Shelter A



### Shelter B



### Shelter C



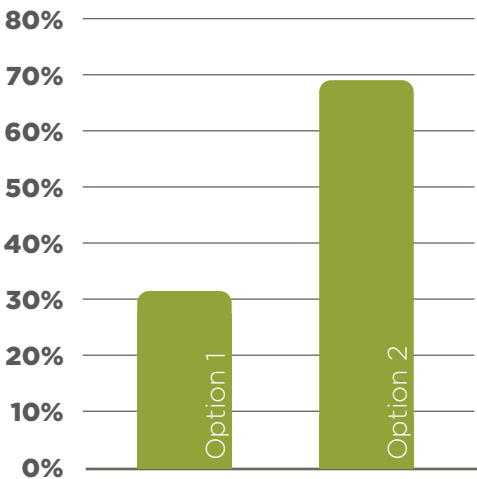
# Let us know your thoughts!

Have additional comments? Grab a sticky note



# Community Engagement - Spring 2025 (Phase 2)

Online Survey Results



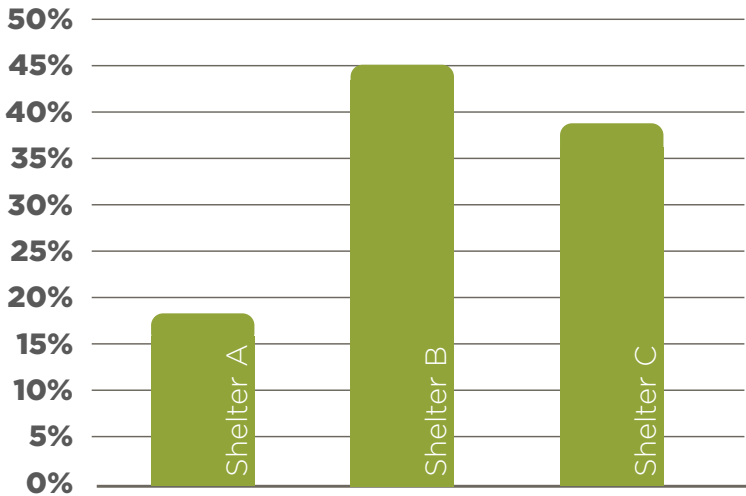
Please select your preferred design between the following two playground alternatives:



Option 1  
Timber Play Structures



Option 2  
Steel & Fabric Play Structures



Please rank the following park shelter designs:



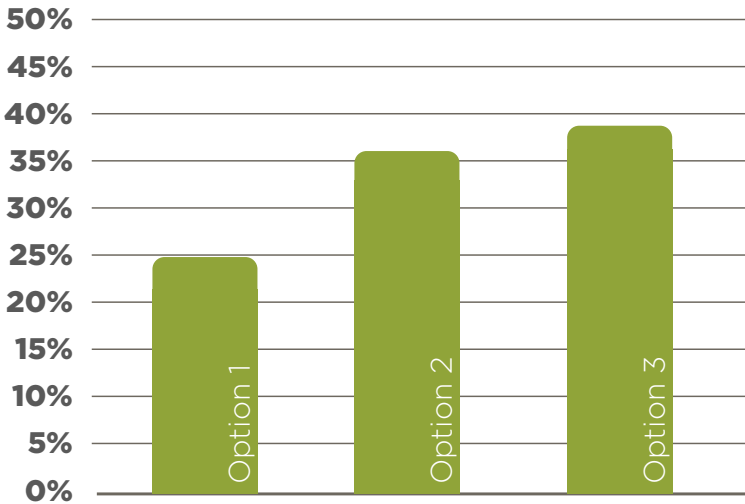
Shelter A  
Tall Hip Roof



Shelter B  
Craftsman Roof



Shelter C  
Single Pitch Roof



Please rank the following shelter materials:



Option 1  
Clean & Traditional



Option 2  
Stones & Steel



Option 3  
Sleek & Modern

## Community Engagement - Spring 2025 (Phase 2)

### Online Survey Results

**602** total  
responses

**96%** of responses were  
UA residents

### Please share your thoughts on the following overall park master plan:

- Many respondents appreciate the inclusion of natural play areas, an amphitheater, and a four-season pavilion.
- Concerns were raised about the interactive wetland, with some fearing it could attract mosquitoes or pose a safety risk for children.
- Several commenters suggested adding more pickleball courts and basketball courts.
- There were mixed feelings about the amphitheater, with some questioning its necessity and potential noise impact on neighbors.
- Many emphasized the importance of maintaining green space and preserving existing trees.
- Suggestions included adding a splash pad instead of wetlands, ensuring ample parking, and improving pedestrian safety with better crosswalks and sidewalks.
- Some commenters expressed the need for more shaded areas, especially over play structures, and more accessible playground equipment for children with disabilities.
- Additional amenities like dog parks, water features, and picnic areas were also suggested by several respondents.

### Please share your thoughts on these park pavilion designs and materials.

- Many respondents prefer a design that blends with the natural surroundings and maintains a traditional, classic appearance.
- There is a significant preference for natural and earthy materials, such as wood and stone, which are perceived as warm and inviting.
- Several participants expressed concerns that sleek and modern designs may look dated over time.
- Option 3, with its lower roof profile and natural wood aesthetic, received positive feedback for its ability to blend into the park environment.
- Options 2 and 3 were favored for their modern design elements and extensive use of glass, providing a bright and open feel.
- Some respondents disliked the use of gray tones and excessive modernity, associating these with trends that might quickly become outdated.
- Participants appreciated designs that are functional, sustainable, and provide ample natural light.
- There were also specific preferences for the durability and maintenance requirements of the materials used.

### Please share your thoughts on why you selected one versus the other and provide any other input on desired playground elements.

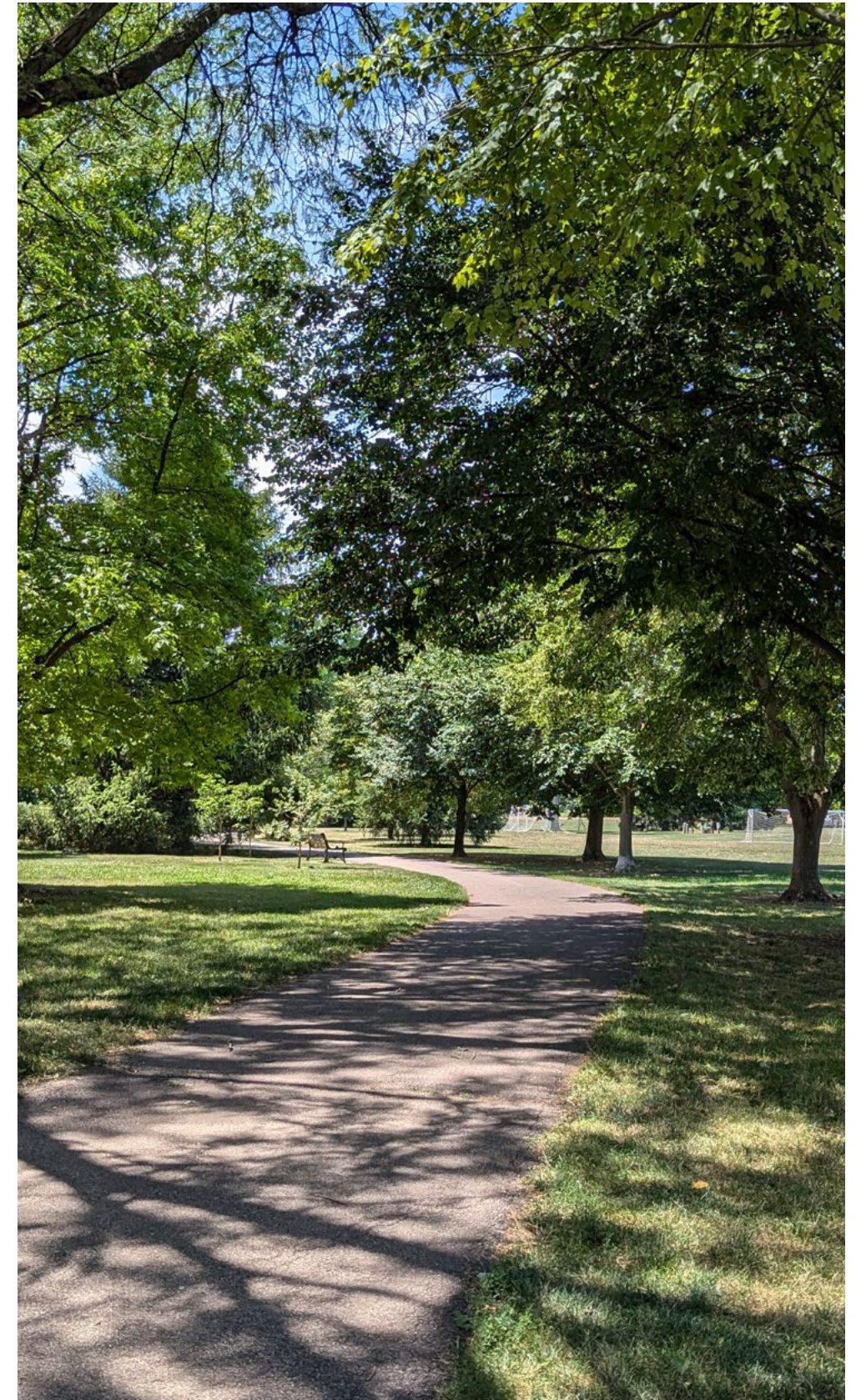
- Preference for natural look: Many respondents preferred the timber structures for their natural appearance and ability to blend with the park's surroundings.
- Concerns about durability: There were worries about the longevity and maintenance of timber structures, including potential issues with splinters and weather damage.
- Variety and engagement: Option 2, the steel and fabric structures, was favored for its variety of play elements, perceived durability, and shaded areas.
- Safety considerations: Some respondents mentioned the importance of safety features, such as avoiding splinters and providing shaded areas to prevent equipment from getting too hot.
- Inclusive play: There was an emphasis on the importance of inclusive play options, ensuring that children of all abilities can enjoy the playground.
- Preference for existing features: Several respondents expressed a preference for maintaining the current playground features, which they found to be excellent and well-suited for a wide age range.
- Mixed feelings about both options: Some respondents had mixed feelings, appreciating aspects of both options, but also expressing concerns about each.

## Community Engagement - Spring 2025 (Phase 2)

### Online Survey Results - Top Takeaways

#### Public Input

- More parking to reduce demand for on-street parking
- Maintain green space and preserve mature trees
- More native trees and pollinator plants
- Steel and fabric play structures are preferred for their durability and shade
- Four-Season Shelter and nature stage were generally supported but concerns were raised about ensuring that the design is appropriate for the neighborhood
- Expanded nature play was appreciated, but concern was expressed about safety and mosquitos
- Separated pickleball courts are appreciated, but concern was expressed about sound
- Craftsman-style was the preferred Four-Season Shelter design
- Sleek & Modern was the preferred materials palette, although many also appreciated the warmth and durability of wood and stone over more modern elements





# Existing Conditions



### PARK ELEMENTS LEGEND

- 1 Existing Parking Lot (49 Spaces)
- 2 Seasonal Shelter
- 3 Shuffleboard Courts
- 4 Satellite Maintenance Area
- 5 Playground
- 6 Story Book Walk
- 7 Nature Play Area
- 8 Woodland Path
- 9 Existing Athletic Fields
- 10 Fitness Equipment
- 11 Park Plaza
- 12 Tennis & Pickleball Courts
- 13 Trash / Recycling Enclosure
- 14 Compost Drop-off



# Site Plan Enlargement

September 2024 Plan



### PARK ELEMENTS LEGEND

- 1 Existing Parking Lot (49 Spaces)
- 2 Four-Season Shelter
- 3 Open-Air Shelter
- 4 Satellite Maintenance Area (Relocation of Existing in Park Maintenance)
- 5 Playground
- 6 Story Book Walk
- 7 Nature Play Area
- 8 Woodland Path
- 9 Meadow Buffer
- 10 Expanded Nature Play
- 11 Existing Athletic Fields
- 12 Park Plaza
- 13 Tennis & Pickleball Courts
- 14 Pollinator Meadow
- 15 Nature Stage
- 16 Trash / Recycling Enclosure
- 17 Compost Drop-off

# Site Plan Enlargement

June 2025 Plan



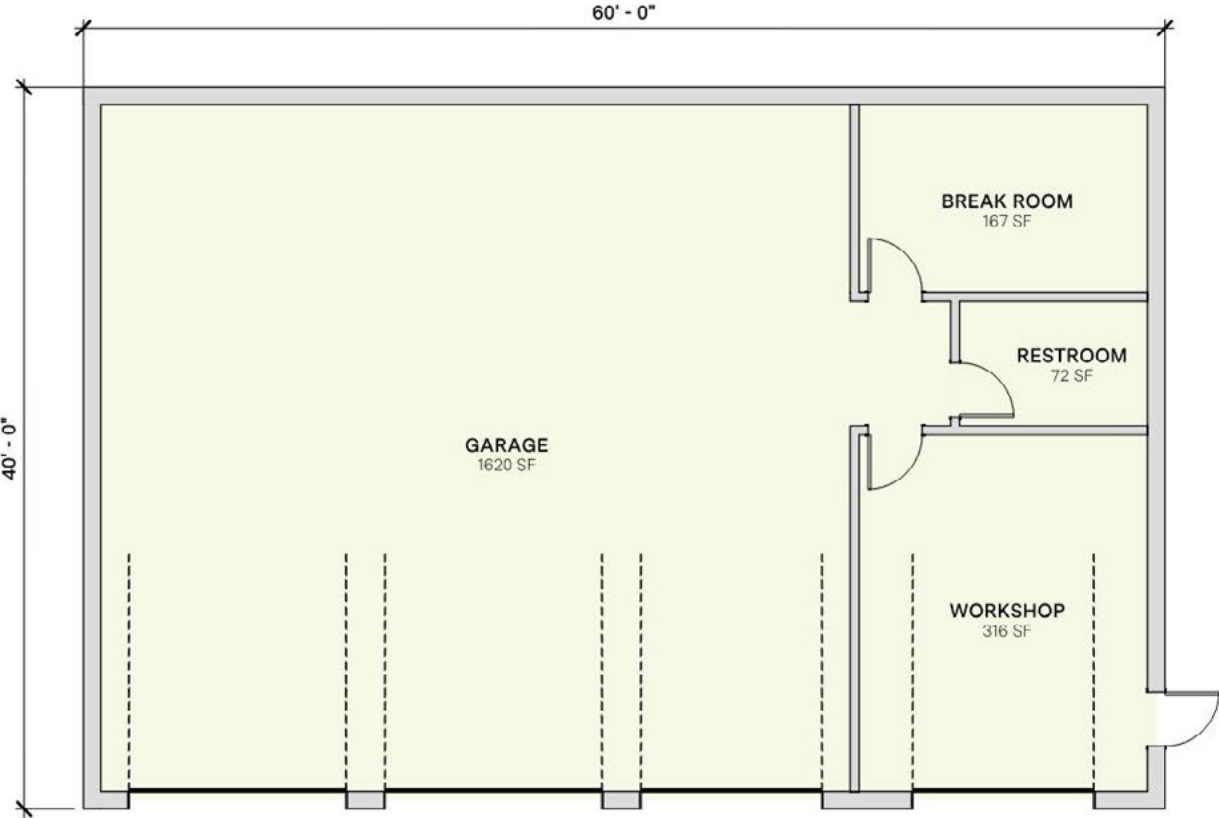
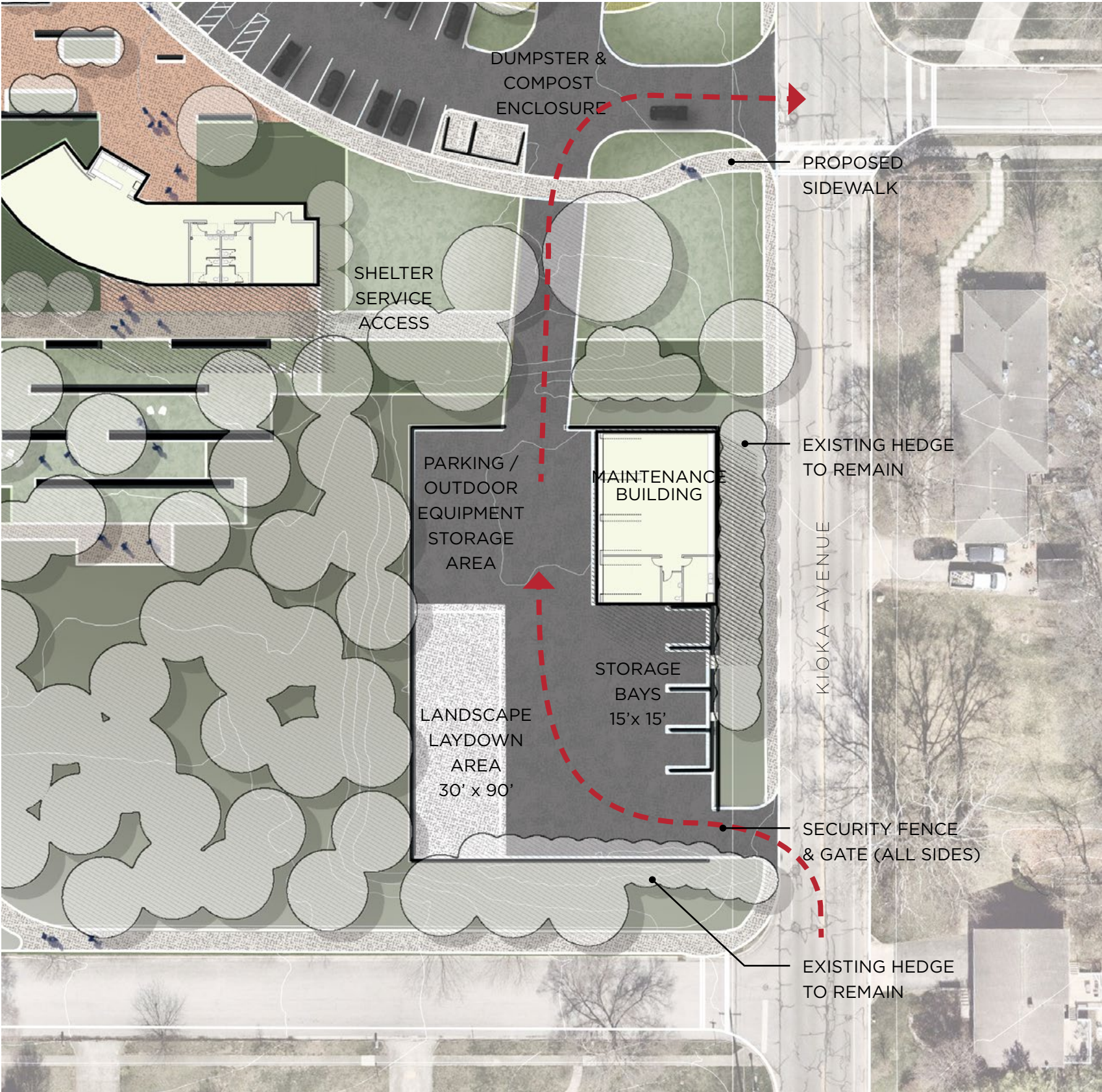
### PARK ELEMENTS LEGEND

- 1 Parking Lot (88 Spaces)
- 2 Four-Season Shelter
- 3 Open-Air Shelter
- 4 Stormwater Detention Area
- 5 Satellite Maintenance Area (Relocation of Existing in Park Maintenance)
- 6 Playground
- 7 Story Book Walk
- 8 Nature Play Area
- 9 Woodland Path
- 10 Meadow Buffer
- 11 Expanded Nature Play
- 12 Renovated Athletic Fields
- 13 Park Plaza
- 14 Tennis Courts
- 15 Pickleball Courts
- 16 Courts Hitting Wall
- 17 Bioswale (in parking lot)
- 18 Pollinator Meadow
- 19 Nature Stage
- 20 Trash / Recycling Enclosure
- 21 Compost Drop-off
- 22 Sidewalk
- ← Pedestrian Access



# Satellite Maintenance Area (Phase I)

Relocation of Existing in Park Maintenance

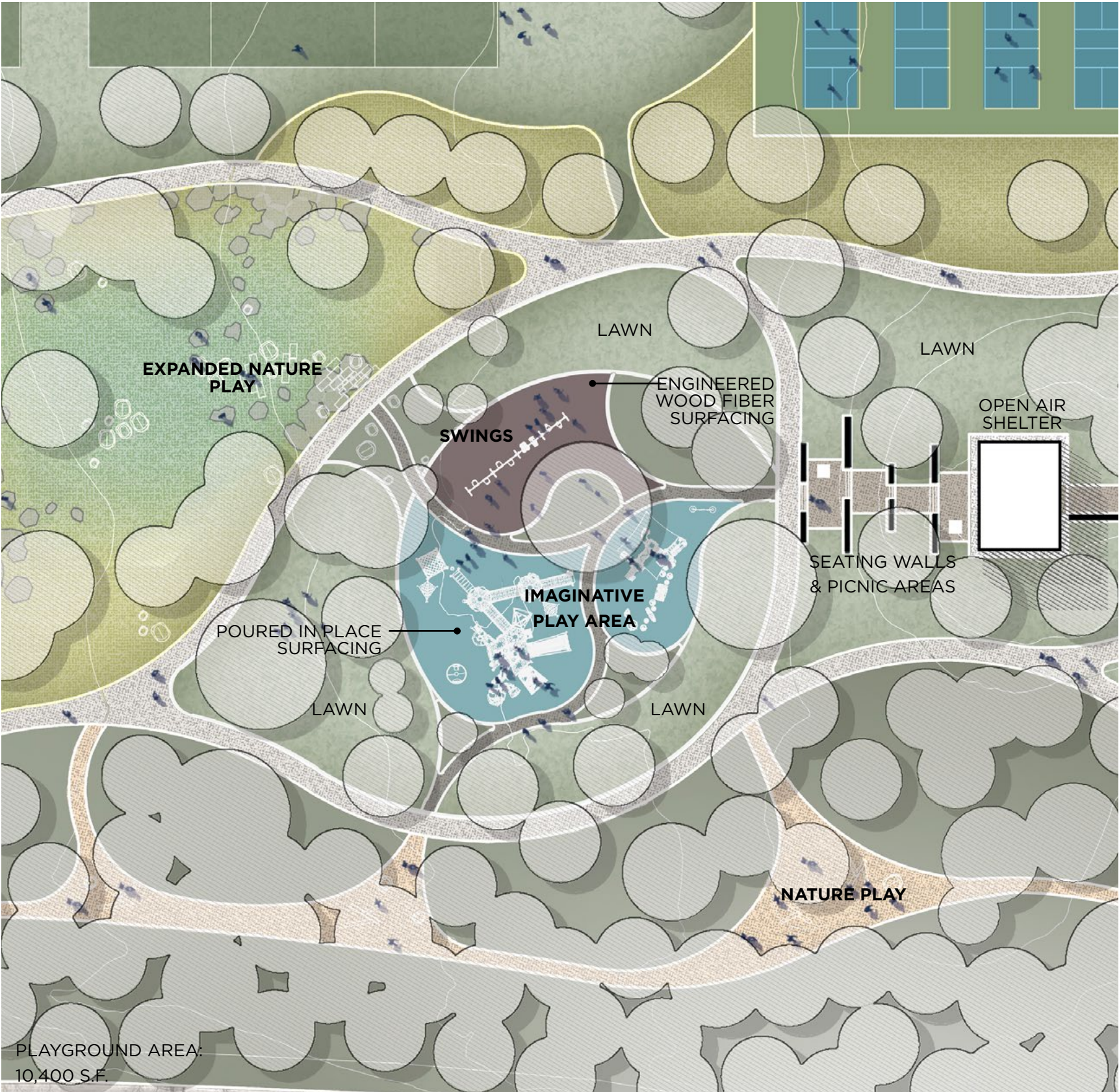


Service Building Concept Plan



Satellite Maintenance Area (Wickliffe / Kioka)

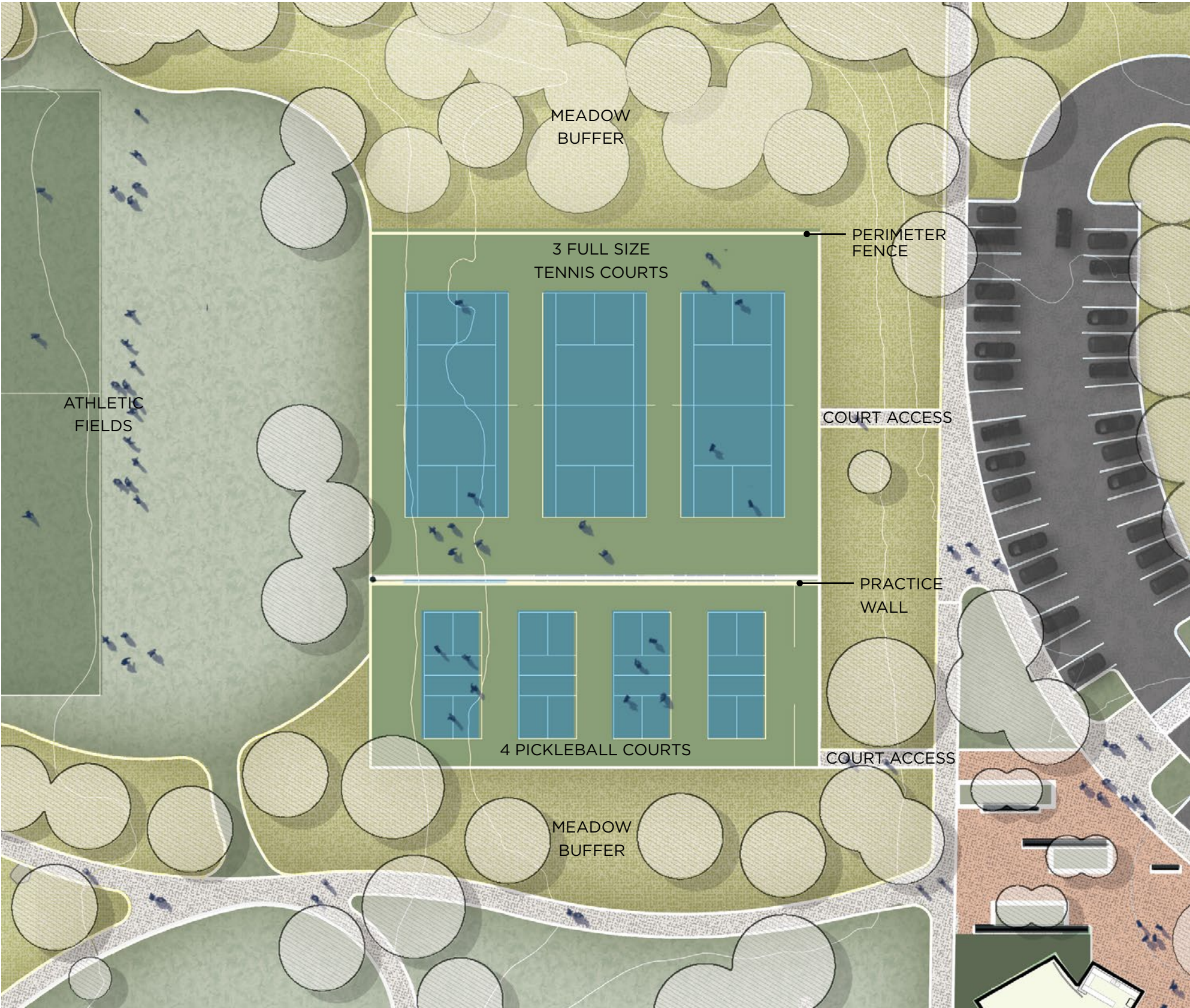
# Playground



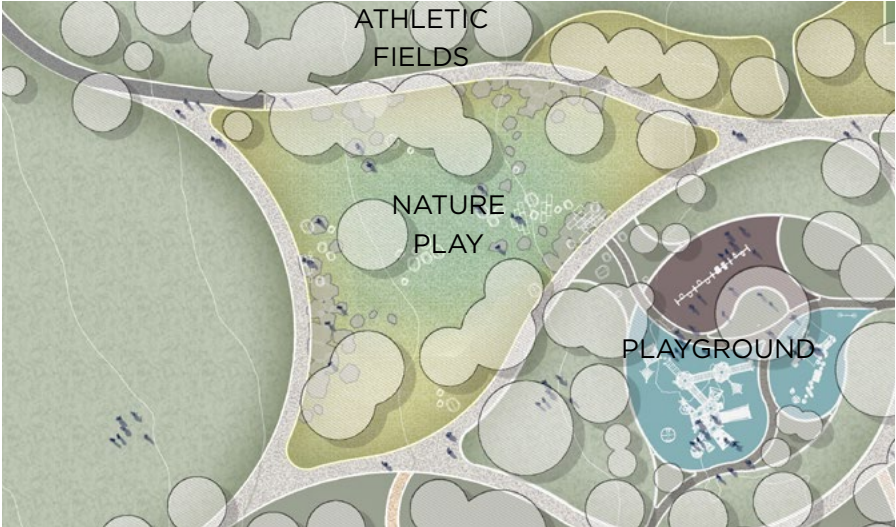
Playground



# Tennis & Pickleball



# Expanded Nature Play

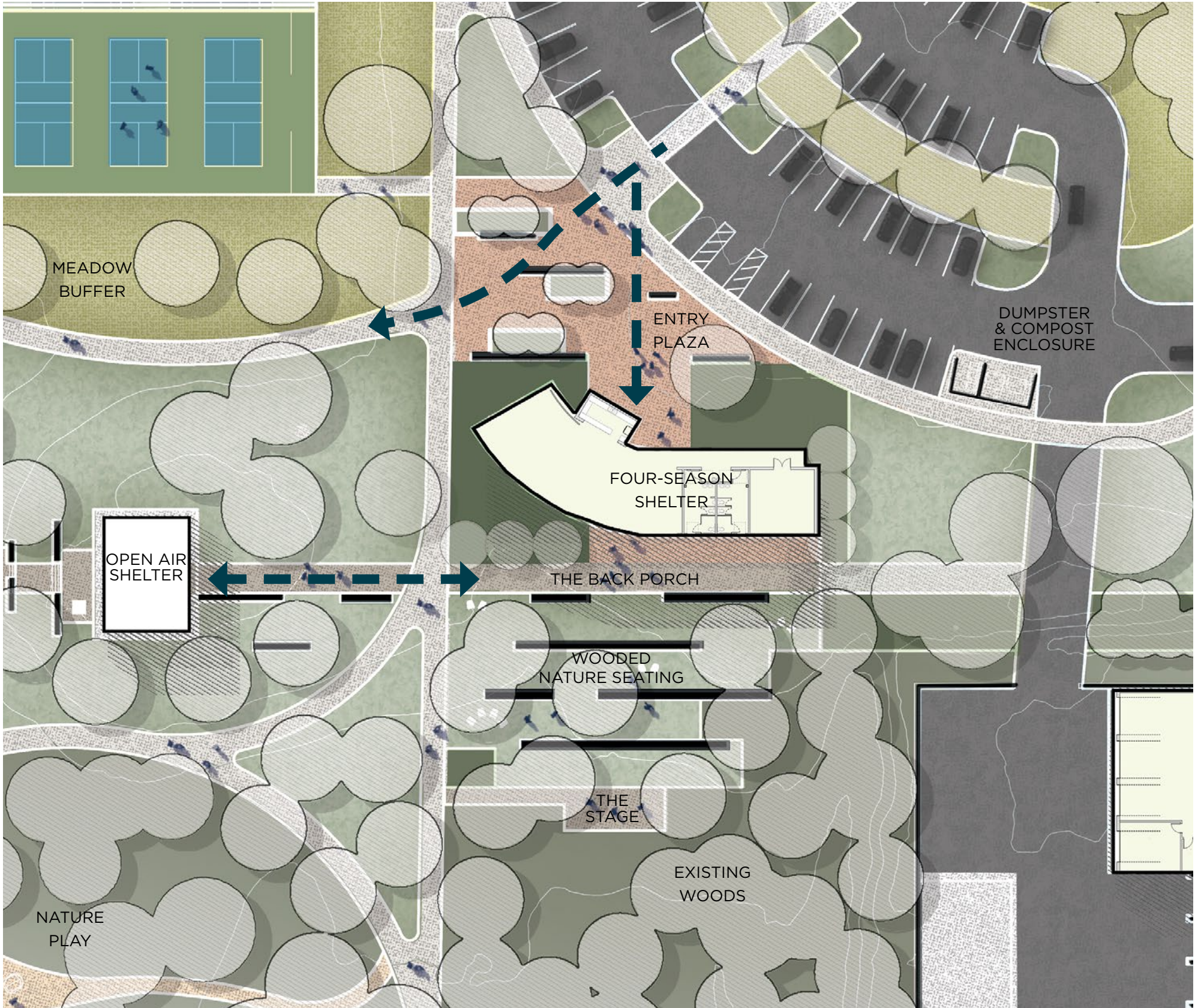


# Expanded Parking

EXISTING SPACES: 49  
 PROPOSED SPACES: 88



Four Season Shelter



## Project Overview

The event pavilion is a multi-functional structure designed to serve as the heart of a vibrant park catering to the wide-ranging community of Upper Arlington. Located at the park's entrance, the pavilion acts as a welcoming gateway connecting visitors to an adjacent amphitheater and the sprawling park beyond. The facility will house an event space with a prep kitchen, storage and mechanical spaces, and park restrooms, supporting the park's varied activities. In tribute to the Hanley family, this land's rich history and natural diversity inspire the pavilion's design.

Design Theme:

### Celebrating Natural Diversity

The pavilion's architectural theme centers on the park's *natural diversity*, reflecting the harmonious coexistence of its varied ecology, activities, and community members. This theme embodies the idea of unity through difference, drawing inspiration from the organic interplay of wetlands, fields, and playgrounds. The design will evoke a sense of inclusivity and connection, mirroring the park's role as a shared space where diverse experiences thrive.

Design Motif:

### Diversity in Modular Elements

To express the theme, the pavilion will feature a motif of unique *modular elements*. These repeating components will create a dynamic, patchwork-like aesthetic—each module is distinct yet part of a cohesive whole. This motif will appear across the facade, roofing, and interior accents, visually echoing the park's multifaceted character.

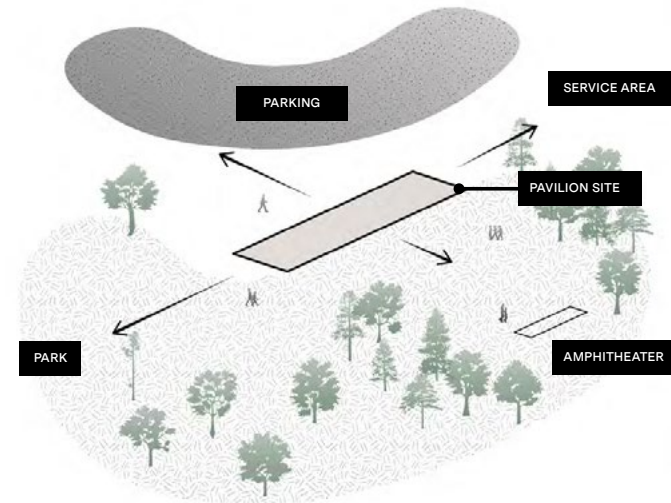
Design Symbol:

### The Mosaic Plaza

As the pavilion serves as the gateway into Fancyburg Park, its symbolic centerpiece will be a vibrant *Mosaic Plaza*—a collaborative effort with the landscape architects that marks the transition from everyday life into a shared community space. The plaza will incorporate diverse colors, materials, and patterns that reflect the richness of the surrounding landscape and will act as both a functional gathering space and a meaningful introduction to the pavilion's architecture.

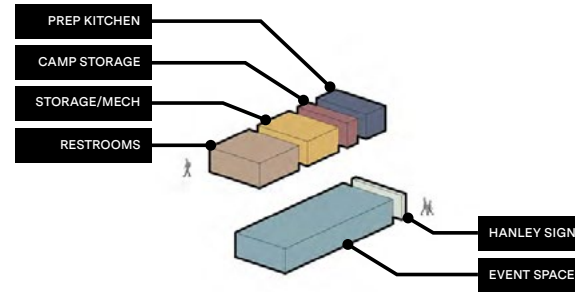
# Four Season Shelter

## Concept Diagrams



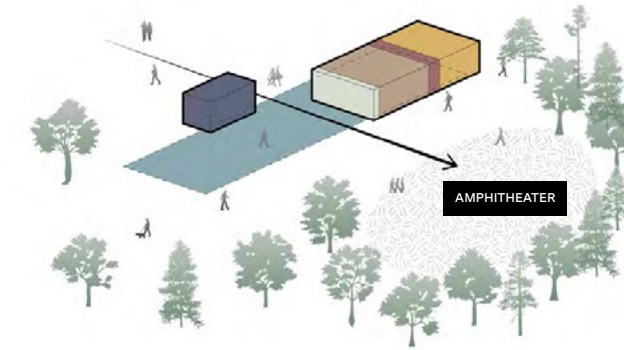
Orientation

The event pavilion is perfectly located at the entry to the park. The pavilion site sits at the center of the activity, acting as a hub to help visitors and park staff transition from parking to amphitheater, or service area to the greater park beyond.



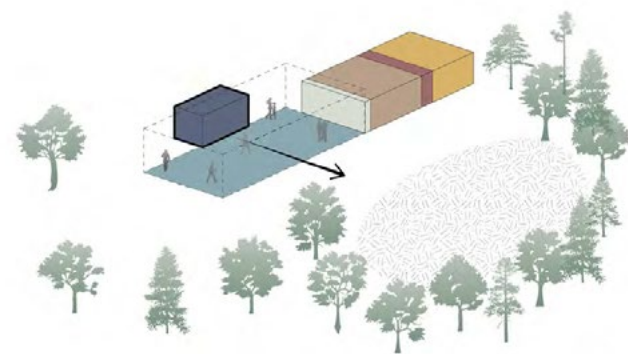
Program

The event pavilion will be an efficient structure housing program spaces to support the greater park including public restrooms, storage and mechanical space, camp storage space, a prep kitch, a large event space, and signage in tribute to the Hanley family.



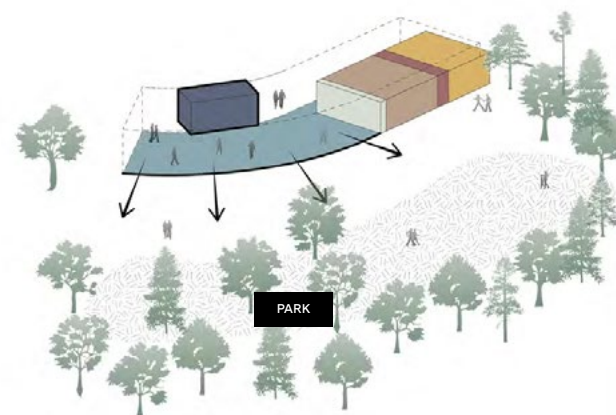
Gateway

The program spaces are combined into blocks and positioned in such a way to create a gateway that frames the amphitheater and park space beyond the pavilion. The gateway creates clear entry and guides the primary circulation route through the pavilion.



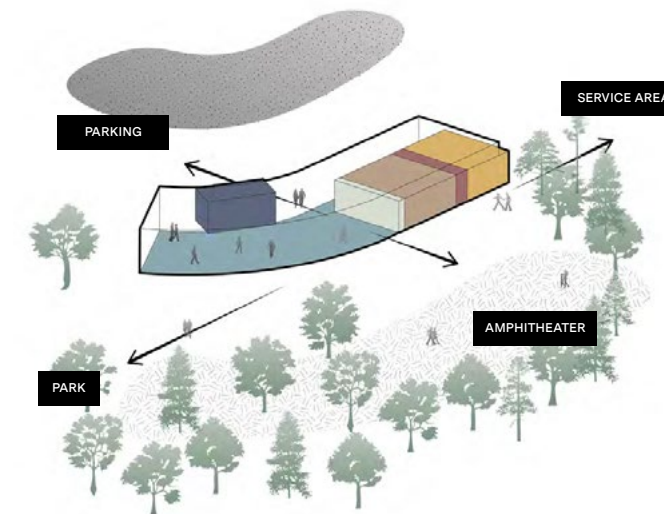
Events

The prep kitchen acts as both the edge of the gateway and the anchor for the event space. The kitchen massing is centered on the event space and acts as a back-drop providing support for camps, community events, and various rental programming within the space.



Panorama

In concert with the dynamic nature of the park, the event space bends to provide a wider panorama for viewing the park from the event space. Leaving the event space open and surrounded by glass, the interior of the pavilion becomes part of the park itself.

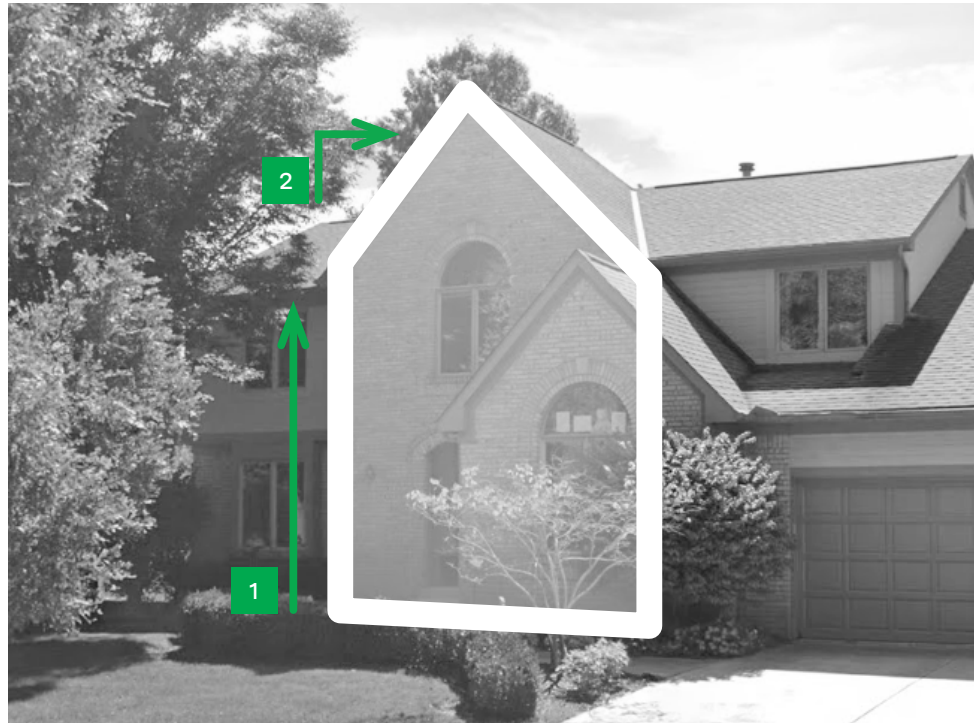


Connections

The pavilion becomes a space where the natural diversity of the park and the community takes center stage. With direct connections to parking, service areas, the adjacent amphitheater, and the park beyond, the pavilion provides the flexibility to serve the community for any occasion.

# Four Season Shelter

## Massing Development



Traditional

One formal language observed repeatedly throughout the community is the traditional English style residence. This form features tall elevations and steeply pitched roofs that can accommodate more active spaces within where higher ceilings are favored.



Craftsman

A second formal language observed throughout the community is the craftsman style residence. This form features long elevations with shallow roof pitches that create a more comfortable interior environment and help blend the building more seamlessly into the landscape.



Modern

A third formal language not observed throughout the community is the modern style residence. This form features a simple single pitched roof that can accommodate flexible spaces with higher and lower ceilings where the roof pitch can help focus views to the surrounding landscape.



Pavilion A - Tall Hip Roof



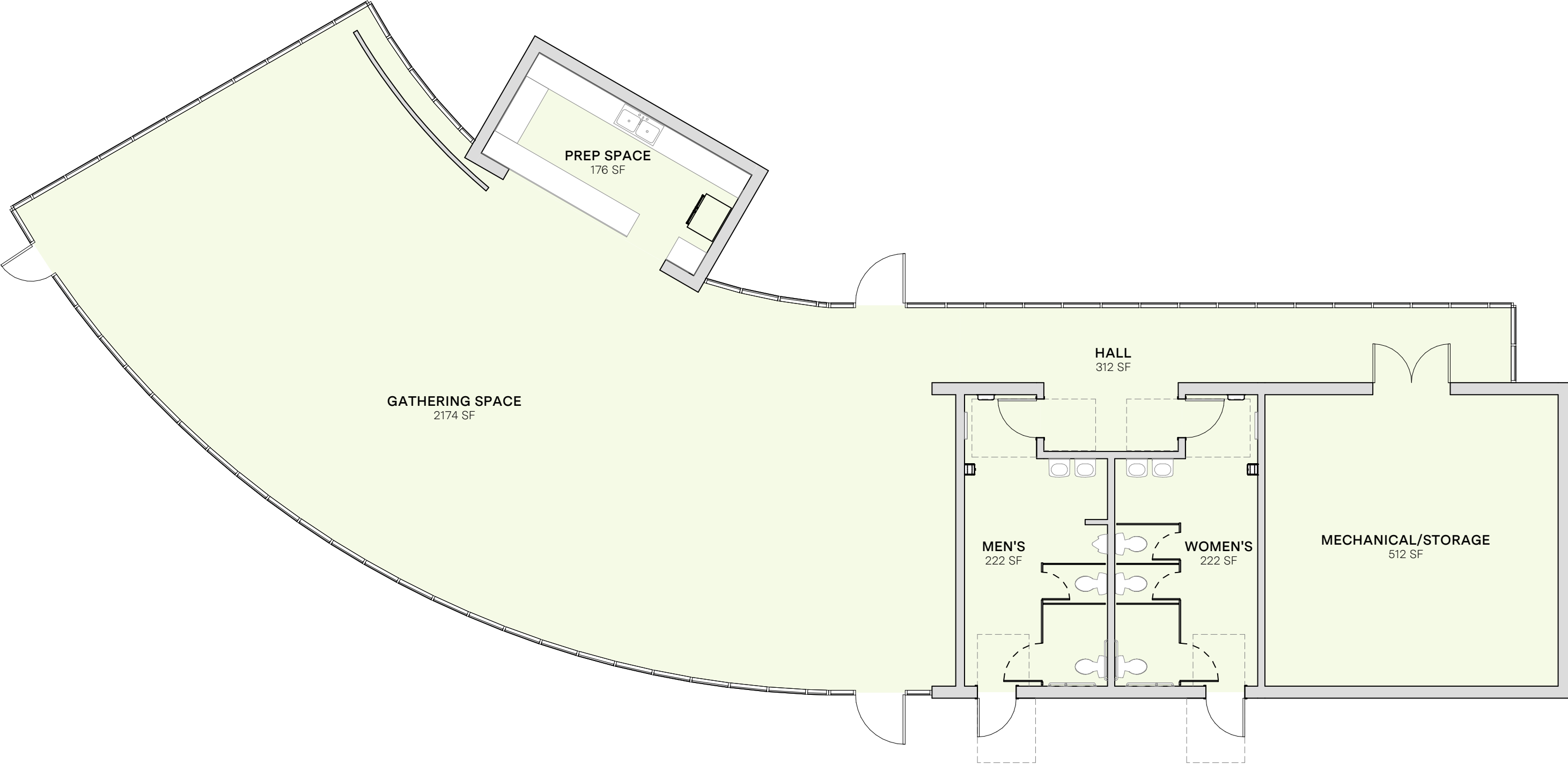
Pavilion B - Craftsman Roof



Pavilion C - Single Pitch Roof

**Four Season Shelter**

Floorplan



## Four Season Shelter



### 3. Sleek & Modern

This palette combines clean-lined materials, smooth concrete, warm-toned wood, and dark metal, with storefront glazing to create a contemporary, refined aesthetic rooted in simplicity and contrast.



Next Steps



## Schedule

<b>Public Input and Concept Presented to City Council</b>	<b>June 16, 2025</b>
<b>Final Master Plan Presented to City Council for Motion of Support</b>	<b>Fall 2025</b>
<b>Design of Service Area</b>	<b>Fall 2025</b>
<b>Construction of Service Area</b>	<b>Spring/Summer 2026</b>
<b>Detailed Design of Park Improvements</b>	<b>Early 2026</b>
<b>Construction of Park Improvements</b>	<b>2027</b>

