



**TUESDAY AUGUST 5<sup>th</sup> 2025 7:30 A.M.**  
**WESTOVER PARK**  
**2111 WESTOVER RD**

1. Welcome: call to order and roll call – Chair Kim Landsbergen / Staff Veronica Trommer
2. Approval of Minutes from June 3<sup>rd</sup>, 2025 – Chair Kim Landsbergen
3. Public Attendance - Chair Kim Landsbergen
4. Discussion/Packet items – Chair Kim Landsbergen and Staff Sam Simmons
  - 4.1 Tree Canopy Assessment – Update
  - 4.2 Westover Trees
5. Updates from staff: - Staff Sam Simmons
  - 5.1 General/Operational Forestry Updates
  - 5.2 Contracts
  - 5.3 Park Updates
  - 5.4 CIP
  - 5.5 Development
6. Friends of UA Parks Update
7. Horticulture Update – Libby Roach
8. Future meetings – Topics and location
9. Adjournment – Chair Kim Landsbergen

Next Meeting – October 7, 2025

**THE PUBLIC IS CORDIALLY INVITED TO ATTEND ALL COMMISSION MEETINGS.**

Upon request to the City Clerk’s office, special accommodations for people with disabilities (i.e., interpreting services, audio recording, etc.) will be arranged for any City meetings open to the public. Requests for special accommodations should be submitted at least 72 hours in advance.

**June 3, 2025, 7:30 A.M.**  
**THE BOB CRANE COMMUNITY CENTER**  
**3200 TREMONT RD**

The City Tree Commission met at the board room of the Bob Crane Community Center and was called to order at 7:30 AM by Chair Kim Landsbergen.

**1. Welcome: Call to order** and roll call - Chair/Veronica Trommer

**MEMBERS PRESENT:**

<u> X </u> Chair Kim Landsbergen	<u> X </u> Vice-Chair J.P. Ratajczak
<u> X </u> Kathy Duke	<u> X </u> Laura Oldham
<u> </u> Scott Zanon	<u> X </u> Laura Fay
<u> X </u> Blythe Price	

**ALSO PRESENT:**

Associate member Karla Gengler-Nowak, Director Debbie McLaughlin, Park Development & Arts Superintendent Jeff Anderson, Parks & Forestry Superintendent Samantha Simmons, Forestry Supervisor Matt Stewart and Administrative Assistant Veronica Trommer.

**MEMBERS ABSENT:**

Scott Zanon and associate member Libby Roach

**2. Approval of Minutes**

Motion to approve the minutes of the Tree Commission meeting for April 1, 2025

**Motioned:** Kim

**First:** J.P.

**Second:** Kathy

**Motion** passed

**3. Public participation**

No public participation

**4. Discussion items**

4.1. Education Outreach/Review –

- 4.1.1. Going forward, only BZAP meetings can be attended virtually. Commissions and boards must attend meetings in person.
- 4.1.2. Arbor Day- successful event: Tremont Elementary third graders helped to plant 3 Honey locust trees on school property. Scott Zanon donated his ABC book to all students in the third-grade class.
- 4.1.3. The Fancyburg Stroll only had two people registered. Trying to figure out how to interest more people to sign up. The more popular ID classes are spring and fall (winter ID not popular)
- 4.1.4. Arbor fest for the city of Columbus is August 23<sup>rd</sup> from 12-5 pm. Some commissioners will be attending.
- 4.1.5. Lane Rd. Library will be reopening in July.

4.2. Fancyburg Master Plan

- 4.2.1. Jeff Anderson presented the master plan for Fancyburg Park. Community engagement began last August. The goal is to share the plans with council on June 16. Phase I is the big picture-likes and dislikes of park. Phase II will be more specifics-styles of playgrounds and shelters. Construction of the service yard will begin next year, then renovation of the park will take place in 2027 & 2028. Forestry division will be reviewing trees for condition, preservation, and protection. The north side of the park will be more of a meadow area and the south side will remain a tree lined wooded area and connecting to the playground.

4.3. Tree Canopy Assessment-

- 4.3.1. Matt Stewart explained several methods of doing a TCA. The city will be doing one in 2025 and comparing to the one done in 2015 to see how canopy has changed in the last 10 years.

**5. Updates from staff**

5.1. Forestry

- Staff is finishing up planting for the spring season.
- Staff will begin doing pruning work and removals for fall planting.
- Planting contractors have one management area left to plant.
- A removal contract is being put out to bid soon.

5.2 Development

- Housing and trees- The Forestry Division is continuing to coordinate with contractors and builders on street tree requirement and process including species /location selection and proper tree planting techniques.

**6. Friends of UA Parks** – Karla Gengler-Nowak

- FOUAP worked at Miller Park last month. It was too wet to work on the hillside, so volunteers worked on honey suckle removal.
- Sam would like volunteer waiver forms to be filled out yearly. There was discussion of possibly using a QR code to link to forms as volunteers don't usually have writing materials with them. This could also help with tracking who had signed off for the year.
- FOUAP will be working with the volunteers from the church removing honey suckle at the west side of Smith Nature Park on June 14<sup>th</sup>.
- FOUAP will be taking the month of July off and will be working at Reed Rd Park in August.

**7. Future meetings** – Topics and location

August meeting possibly at Thompson Park south shelter if available.  
Commissioners can look at the vernal pool near the shelter.

Discuss programming in Activity Guide for January and put cut off dates for future Activity Guides in Agenda for Tree Commission in the future.

Is UA participating in soil and water projects for 2026?

**8. Adjournment**

**Motioned:** Kim

**First:** Laura

**Second:** Blythe

**Meeting adjourned: 9:12 a.m.**

**ATTEST:**

\_\_\_\_\_  
**Secretary Veronica Trommer**

\_\_\_\_\_  
**Chair Kim Landsbergen**

\* \* \*

*The next Commission meeting is scheduled for August 5<sup>th</sup> at 7:30 a.m.*

# Urban Tree Canopy Assessment

Upper Arlington 2025

# RFPs for 2015 vs 2025

2015		
Study Type	Description	Cost???
Base canopy Assessment	Baseline canopy assessment from aerial imagery	3500
Possible veg. cover & background add-on	Analysis of potential planting areas by right-of-way and 6 management areas	
Land cover assessment	For water, bare soil, buildings, impervious surfaces, and roads	
Data analysis & enhancement	For watershed, parcel, parks, management areas, and right-of-way	
Community outreach	Fact sheet highlighting results	
Ecological services analysis	For rights-of-way, parks, private property	
Interactive mapbooks	Clickable layers to view data	
Full report	Covers assessment and analysis	
Total estimated cost		

2025		
Study Type	Description	Cost???
Base canopy Assessment	Baseline canopy assessment using LiDAR	
Vegetation cover	Shows potential planting areas in right-of-way, 6 management areas, parcels, and/or census blocks	
Land cover assessment	For water, bare soil, buildings, impervious surfaces, and roads	
Data analysis & enhancement	For watershed (stormwater mgmt plan add-on) , parcels, parks, city properties, management areas, and right-of-way	
Community outreach	Fact sheet highlighting results, canopy gain/loss from 2015, public vs private land	
Ecological services analysis	For rights-of-way, parks, private property (residential, commercial), socioeconomic, health, traffic density, heat islands	
Interactive mapbooks	Clickable layers to view data (may exist publicly: plan-it GEO, City of Columbus UFMP), breakdown to individual parcel level	
Full report	Covers assessment and analysis, goals and reccomendations?	
Total estimated cost		

# Methodology

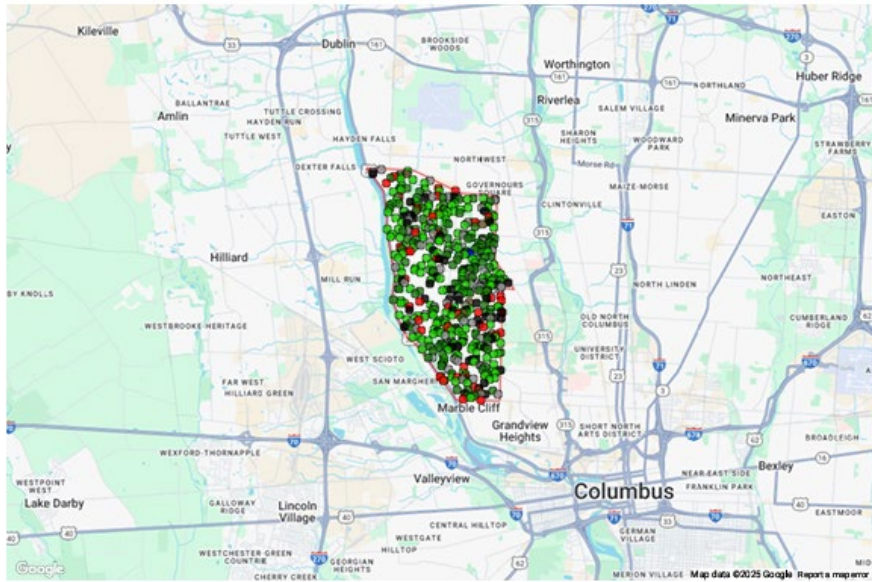
UTC Methods			
Types	Method	Pros	Cons
Point Sampling	Using i-Tree Canopy tool	Can be done in-house, we already have the software (Davey Treekeeper) *Matt completed 1/29/25	very basic, cannot determine plantable space or differentiate between public/private canopy cover, identifier is: tree, road, impervious surface, bare soil, grass, water
GIS Arrial maps	i-Tree Landscape (Davey), Treekeeper Canopy (Davey), Treeplotter (PlantGeo), Tree Equity Score (American Forests)	gives tree canopy coverage as a percentage of selected area, can be compared with census data, tree benefits, prioritize planting areas	Low resolution data, cannot break down to parcel or park level, would provide entire City data, census block or management area data at best
LiDAR	Third party high resolution aerial or satellite imagery, geographic information (elevation/slope)	High resolution images, break down canopy into more detailed layers (trees, vegetation, soil, hardscape, etc), better address potential planting sites, private vs public canopy, canopy loss over time, available online: Plan-it GEO	Most costly, detailed data would need to be analyzed to meet our needs, we can view in-house but need a consultant to interpret
Near Map Software	City has a contract through Engineering Dept. but would need to purchase additional software. Would need to meet with Ross to discuss capabilities and options.	High resolution aerial imagery. Can generate reports, could be used for Stormwater Management Plan, Engineering Dept could benefit	Just raw data, would need to hire a consultant or use in-house staff to interpret data. GIS team would likely not have staff to help

# Point Sampling 2015 vs 2025

## i-Tree Canopy

Cover Assessment and Tree Benefits Report  
Estimated using random sampling statistics on 1/30/2025

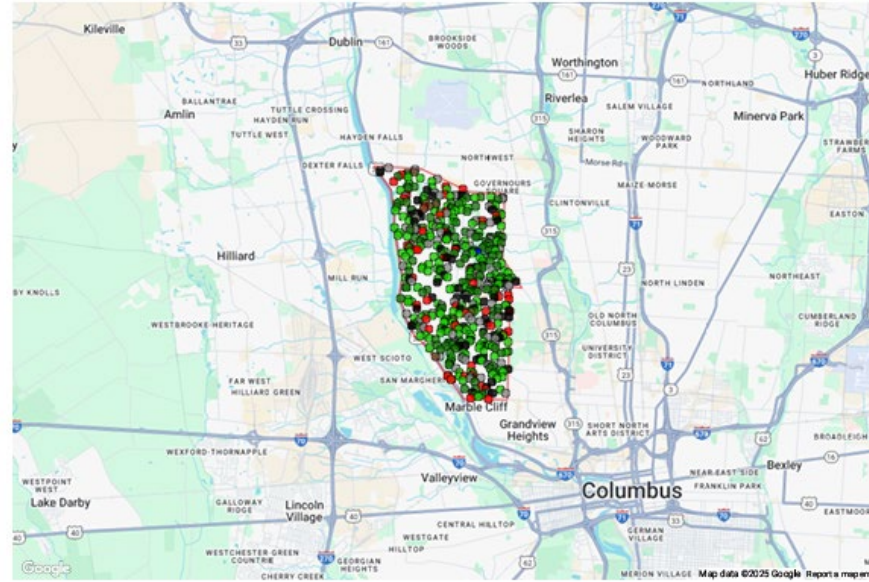
2015



## i-Tree Canopy

Cover Assessment and Tree Benefits Report  
Estimated using random sampling statistics on 1/30/2025

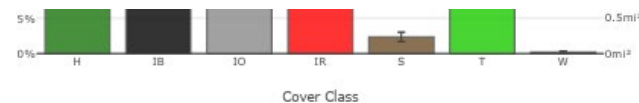
2025



Abbr.	Cover Class	Description	Points	% Cover ± SE	Area (mi <sup>2</sup> ) ± SE
H	Grass/Herbaceous		129	25.80 ± 1.96	2.49 ± 0.19
IB	Impervious Buildings		57	11.40 ± 1.42	1.10 ± 0.14
IO	Impervious Other		72	14.40 ± 1.57	1.39 ± 0.15
IR	Impervious Road		42	8.40 ± 1.24	0.81 ± 0.12
S	Soil/Bare Ground		7	1.40 ± 0.53	0.14 ± 0.05
T	Tree/Shrub		192	38.40 ± 2.18	3.71 ± 0.21
W	Water		1	0.20 ± 0.20	0.02 ± 0.02
<b>Total</b>			<b>500</b>	<b>100.00</b>	<b>9.65</b>

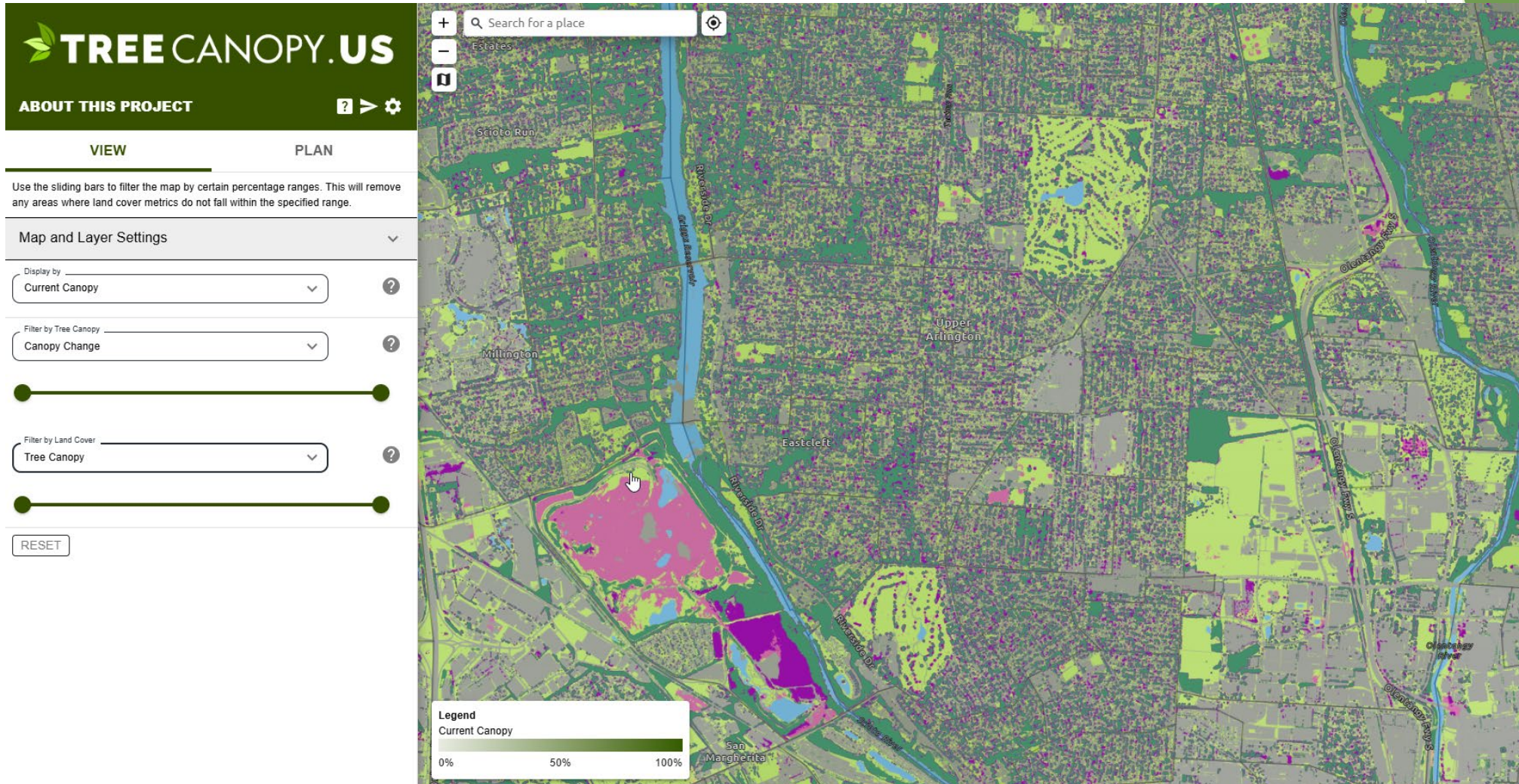


Abbr.	Cover Class	Description	Points	% Cover ± SE	Area (mi <sup>2</sup> ) ± SE
H	Grass/Herbaceous		137	27.40 ± 1.99	2.65 ± 0.19
IB	Impervious Buildings		60	12.00 ± 1.45	1.16 ± 0.14
IO	Impervious Other		79	15.80 ± 1.63	1.53 ± 0.16
IR	Impervious Road		45	9.00 ± 1.28	0.87 ± 0.12
S	Soil/Bare Ground		12	2.40 ± 0.68	0.23 ± 0.07
T	Tree/Shrub		166	33.20 ± 2.11	3.21 ± 0.20
W	Water		1	0.20 ± 0.20	0.02 ± 0.02
<b>Total</b>			<b>500</b>	<b>100.00</b>	<b>9.65</b>



# Treeplotter (PlanItGeo)

<https://treecanopy.us/>



# Treekeeper Canopy (New add-on)

The screenshot displays the TreeKeeper Canopy web application interface. The main map shows the city of Akron, OH, with a green overlay representing tree canopy. A legend on the right indicates that the canopy percentage ranges from 0% (light green) to 93% (dark green). The interface includes a search bar at the top left, a sidebar with various tool options, and a main content area with a 'Tool Overview' section. The 'Tool Overview' section is currently set to 'Observe' and shows a 'Census Tract' layer selected. Below this, there are options to set canopy filters: 'Below City Average', 'At City Average', and 'Above City Average'. The 'City Average' is noted as 35%. The 'Tool Overview' section also includes a 'Prioritize' section with options for 'Plant' and 'Report'. The map itself shows various streets and landmarks, including Silver Lake, Cuyahoga Falls, and Murroe Falls. A red 'C' is placed on the map near Silver Lake. A red 'B' is placed on the left sidebar, and a red 'D' is placed on the bottom navigation bar. The bottom navigation bar includes links for 'Resources', 'Vacant Sites', and 'Species Diversity'. The top right corner of the interface shows a welcome message: 'Welcome to TreeKeeper Canopy' and 'Welcome, Matt Stewart'. The bottom right corner has a 'Terms' link and a 'Report a map error' link.

**A** Tool Overview  
Observe  
Select a boundary layer to observe the current urban tree canopy percent and possible urban tree canopy percent.  
Select Layer: Census Tract  
Set Canopy filter to Areas that are:  
Below City Average | At City Average | Above City Average  
\*City Average = 35%

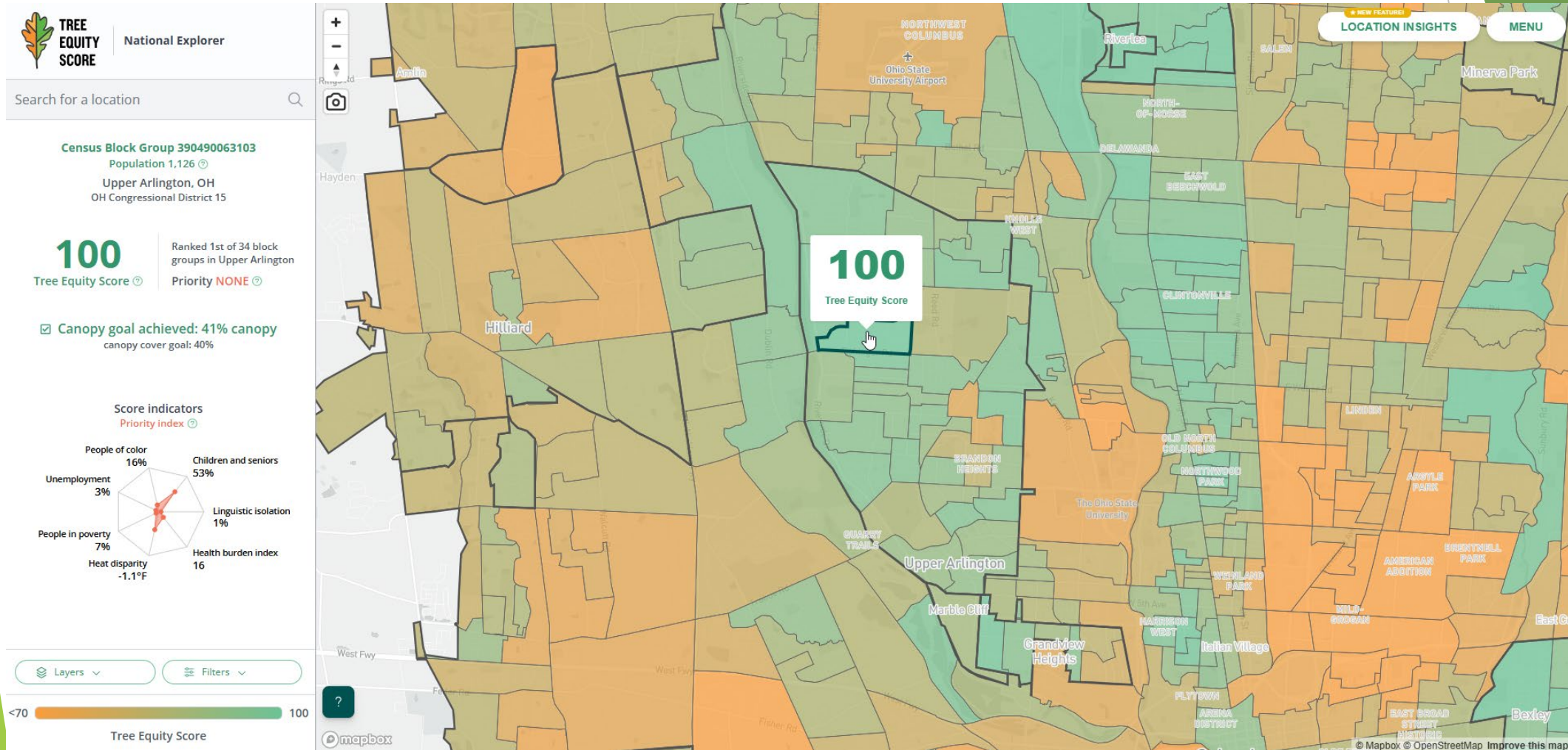
**B** SIDEBAR  
Active Layers:  
Selected Park Trees  
Selected Street Trees  
Park Trees  
Street Trees  
~ROW  
~Centerlines  
Maintenance: GONE Tree  
~Parcels  
Aerial  
Inactive Layers:  
Selected Layers (0)  
Layers (0)

**C** Legend  
Census Tract  
Canopy Percentage  
93% Canopy  
0% Canopy

**D** Bottom Navigation  
Resources | Vacant Sites | Species Diversity

# Tree Equity Score

<https://www.treeequityscore.org/>



## LANDCOVER



### Key Terms

- Existing Tree Canopy:** The amount of tree canopy present when viewed from above using aerial or satellite imagery.
- Possible Tree Canopy - Vegetated:** Grass or shrub area that is theoretically available for the establishment of tree canopy.
- Possible Tree Canopy - Impervious:** Asphalt, concrete or bare soil surfaces, excluding roads and buildings, that are theoretically available for the establishment of tree canopy.
- Not Suitable:** Areas where it is highly unlikely that new tree canopy could be established (primarily buildings and roads).

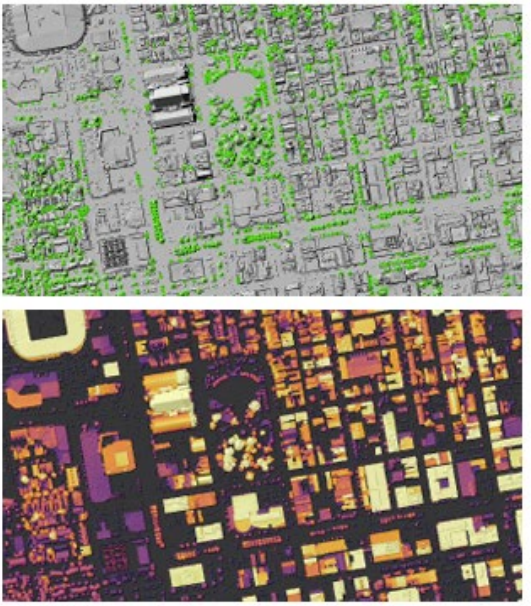
### Measuring Tree Canopy Change

- Area Change:** - the change in the area of tree canopy between the two time periods.
- Relative % Change:** -the magnitude of change in tree canopy based on the amount of tree canopy in 2011.
- Absolute % Change:** - the percentage point change between the two time periods.

## MAPPING THE TREE CANOPY FROM ABOVE

Tree canopy assessments rely on remotely sensed data in the form of aerial imagery and light detection and ranging (LiDAR) data. These datasets, which have been acquired by various governmental agencies in the region, are the foundational information for tree canopy mapping. Imagery provides information that enables features to be distinguished by their spectral (color) properties. As trees and shrubs can appear spectrally similar, or obscured by shadow, LiDAR, which consists of 3D height information, enhances the accuracy of the mapping. Tree canopy mapping is performed using a scientifically rigorous process that integrates cutting-edge automated feature extraction technologies with detailed manual reviews and editing. This combination of sensor and mapping technologies enabled the city's tree canopy to be mapped in greater detail and with better accuracy than ever before. From a single street tree along a roadside to a patch of trees in a park, every tree in the city was accounted for.

### Tree Canopy Mapping



Locations of individual trees and their crowns (top) that were derived from the 2020 LiDAR (bottom).

The high-resolution land cover that forms the foundation of this project was generated from the most recent LiDAR, which was acquired in 2020. Compared to national tree canopy datasets, which map at a resolution of 30-meters, this project generated maps that were over 1,000 times more detailed and better account for all of the city's tree canopy.

### Land Cover Mapping



High-resolution land cover developed for this project.

# City of Columbus As a Resource

## UPPER ARLINGTON OHIO 2011-2021 Tree Canopy

### Community & County Overview

The City of Upper Arlington has an estimated population of 36,618 residents. In Upper Arlington, 34.2% of land is covered by tree canopy compared to 21.1% in Franklin County.

Trees provide essential ecosystem services. Franklin County's trees store carbon, and \$15 million of avoided healthcare costs from air pollution.

**Upper Arlington**  
269,000  
Estimated total trees

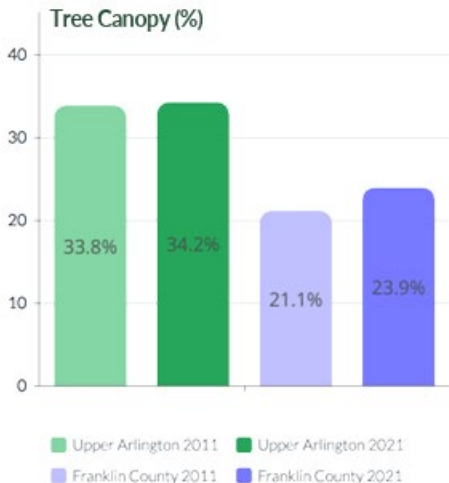
**Franklin County**  
12.8 Million  
Estimated total trees

**+20 Acres**  
Area change in tree canopy from new plantings & incremental growth  
(435.8 acres of gain - 415.7 acres of loss).

**+9,712 Acres**  
Area change in tree canopy from new plantings & incremental growth  
(19,202 acres of gain - 9,490 acres of loss).

**+0.4%**  
Change in tree canopy area

**+2.8%**  
Change in tree canopy area



\* Population and area mileage from 2021 Mid-Ohio Regional Planning Commission and Franklin County Tree Eco methodology and values for Franklin County. Nowak, D.J., 2021. Understanding Agriculture, Forest Service, Northern Research Station.



# Tree Canopy Assessment 2011-2021

Columbus & Franklin County, OH

PREPARED BY:



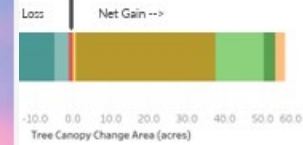
33 Broad Street, Boston, MA 02109  
sanborn.com

PREPARED FOR:

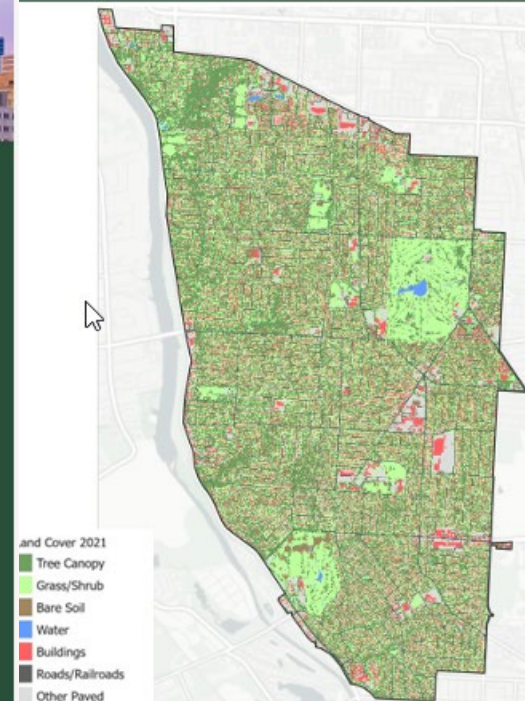
The City of Columbus & Franklin County

## UPPER ARLINGTON, OHIO Tree Canopy Summary

Upper Arlington had the most net gain in tree canopy on the Right of Way (ROW) and had the most net loss in



### 2021 Land Cover Map



Trees in areas where tree canopy is low or in locations where tree canopy is thin help grow canopy.



Refer to the full Tree Canopy Assessment and corresponding geographic data available by Franklin County and its jurisdictions to help manage trees.



## Introduction

Why a Master Plan for Fancyburg Park?

- Renovation of Northam Park completed in 2025 and Devon Pool in 2026 after multiple phases of construction
- Fancyburg will be the next capital focus after these facilities
- Several amenities in Fancyburg are nearing the end of their service life including the playground, shelter, shuffleboard courts, and maintenance yard
- Fancyburg is loved for its open spaces and natural areas, but there is a need to bring amenities up to current standards (year round restrooms, safe paths, functional parking)
- City recognizes the importance of having consensus on necessary improvements and a clear plan for implementation



# Community Engagement



# Community Engagement

## Process

### Phase I

The first phase of community outreach for the renovation of Fancyburg Park returned valuable insights and countless thoughtful neighborly conversations.

Step One consisted of two open houses: one at the August 6th National Night Out in Fancyburg Park and a second at the August 7th Upper Arlington Farmer's Market at the Tremont Center. Visitors were asked to vote on their preferred park amenities as well as provide any additional thoughts and ideas on how to improve Fancyburg Park.

Step Two consisted of an online survey, compiled by EDGE and Upper Arlington Parks & Recreation staff and distributed via their email database. Similar questions to the open houses were posed, gathering feedback on amenities and preferences. Over 900 survey responses were recorded.

### Phase I Outreach

- National Night Out
- Farmer's Market
- Online Survey
- PRAB Meeting
- City Council

### Phase II

Phase II of the master planning process engaged residents via additional open houses and a second survey. Upper Arlington Parks & Recreation staff as well as members of the design team held an open house at the Fancyburg Park shelter on May 7, and Parks and Recreation Staff also displayed project boards and answered questions at the Spring Fling at Sunny 95 Park. Residents were asked to assist with design decisions regarding the playground and park pavilion, in addition to gather their general thoughts and input on the overall park master plan. A second online survey was also released, garnering over 600 responses.

### Phase II Outreach

- Spring Fling
- Fancyburg Park Open House
- Online Survey
- PRAB Meeting
- City Council



# Community Engagement - Fall 2024 (Phase 1)

## In Person Feedback

### Play Character



THEMED PLAY STRUCTURES



ROPE STRUCTURES



PLAY TOWERS



MUSICAL PLAY EQUIPMENT



LOG CLIMBERS



TREE HOUSE



GROUND / ACCESSIBLE PLAY



NATURE PLAY

### Architecture Character



OPEN AIR SHELTER (TRADITIONAL)



SHADE STRUCTURES



OPEN AIR SHELTER (GEOMETRIC)



FOUR SEASON PAVILION (MODERN)

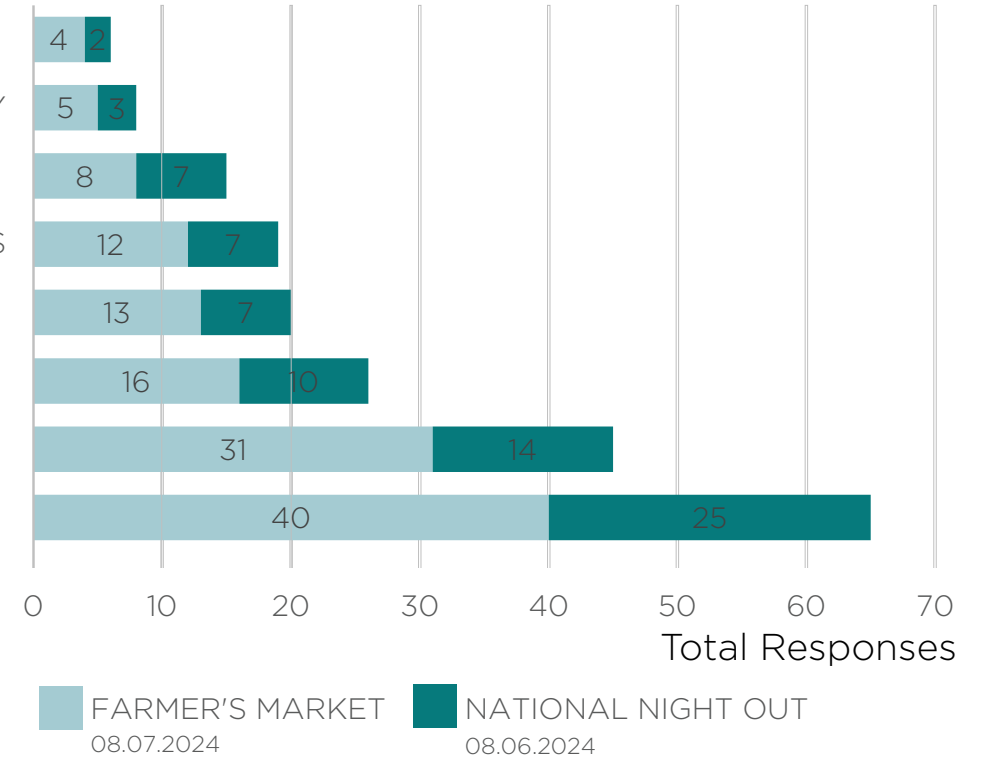


FOUR SEASON PAVILION (TRADITIONAL)

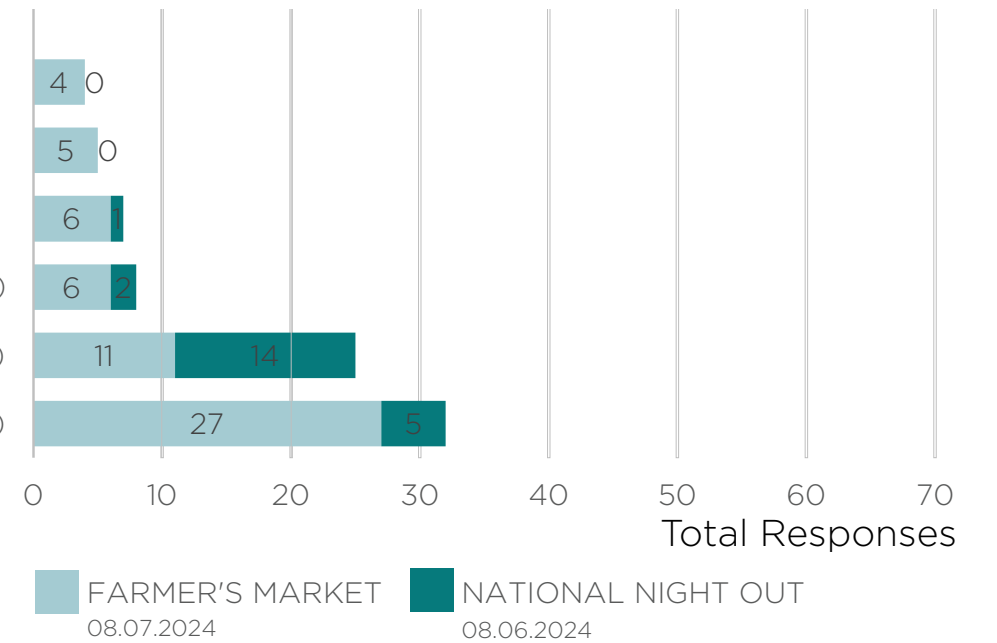


PUBLIC MURALS

- MUSICAL PLAY EQUIPMENT
- GROUND / ACCESSIBLE PLAY
- ROPE STRUCTURES
- LOG CLIMBERS
- PLAY TOWERS
- THEMED PLAY STRUCTURES
- NATURE PLAY
- TREE HOUSE



- OPEN AIR SHELTER (GEOMETRIC)
- SHADE STRUCTURES
- PUBLIC MURALS
- OPEN AIR SHELTER (TRADITIONAL)
- FOUR SEASON PAVILION (TRADITIONAL)
- FOUR SEASON PAVILION (MODERN)



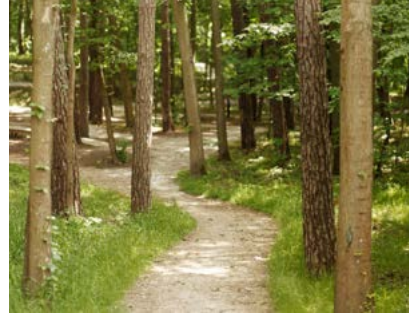
# Community Engagement - Fall 2024 (Phase 1)

## In Person Feedback

### Passive Recreation Activities



NATURE PATH / BOARDWALK



WOODLAND PATH



POLLINATOR MEADOW



WALKING TRAIL



INTERACTIVE WETLAND



SMALL GROUP SEATING

### Active Recreation Activities



BASEBALL / SOFTBALL



TENNIS



MEASURED RUN / WALK ROUTES



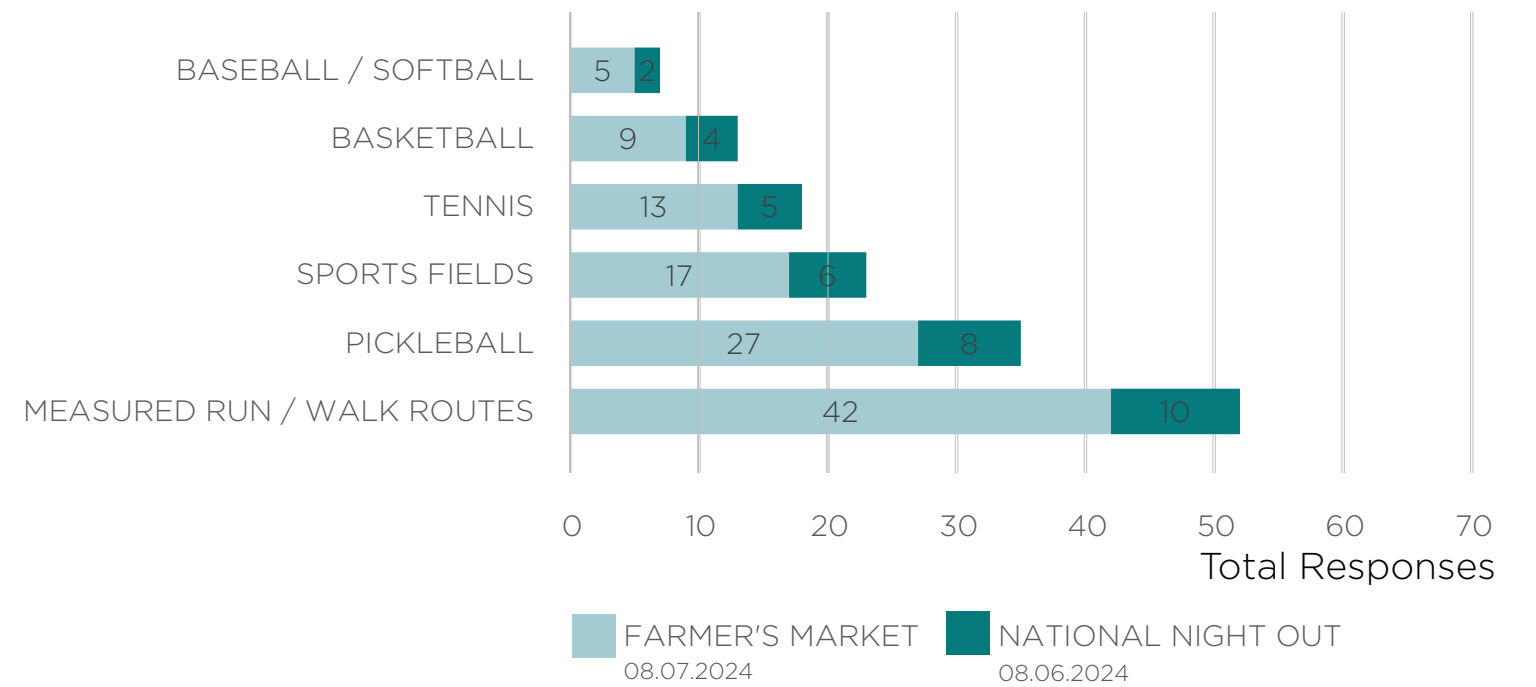
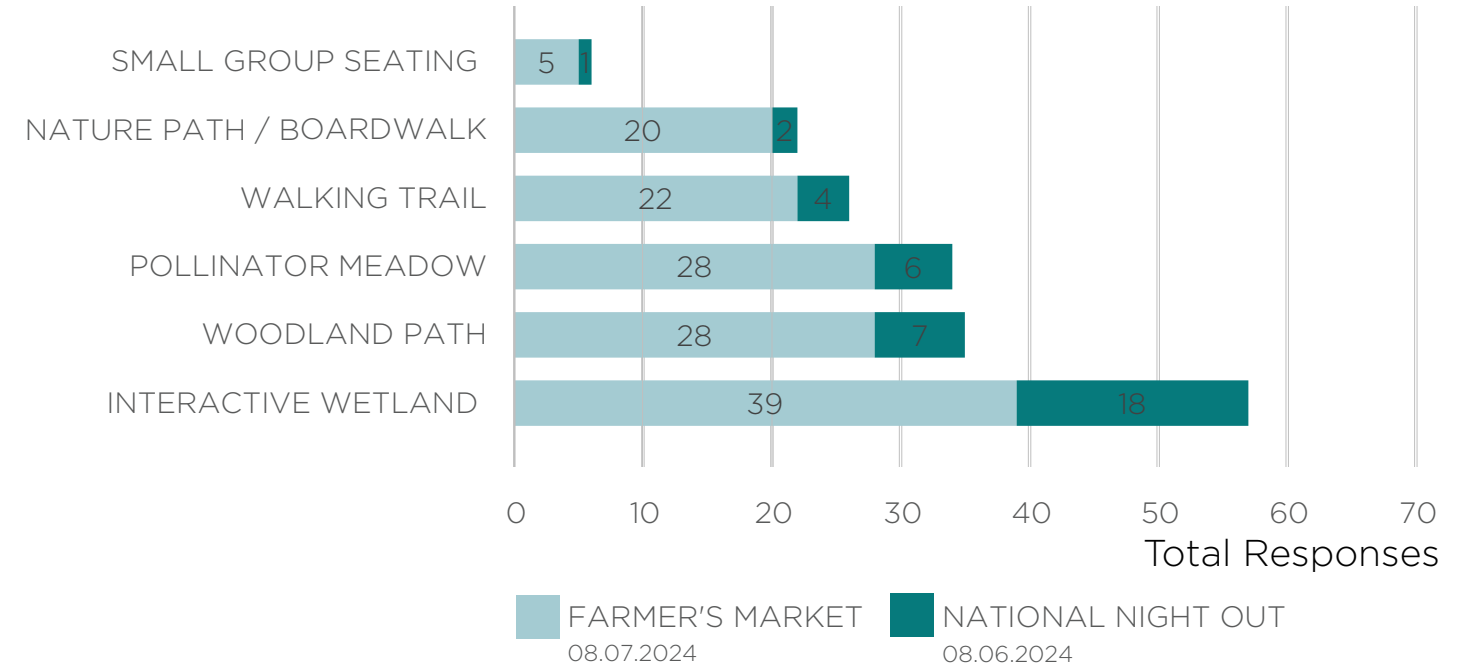
BASKETBALL



SPORTS FIELDS



PICKLEBALL



# *Tell us what you would like to see at Fancyburg Park*



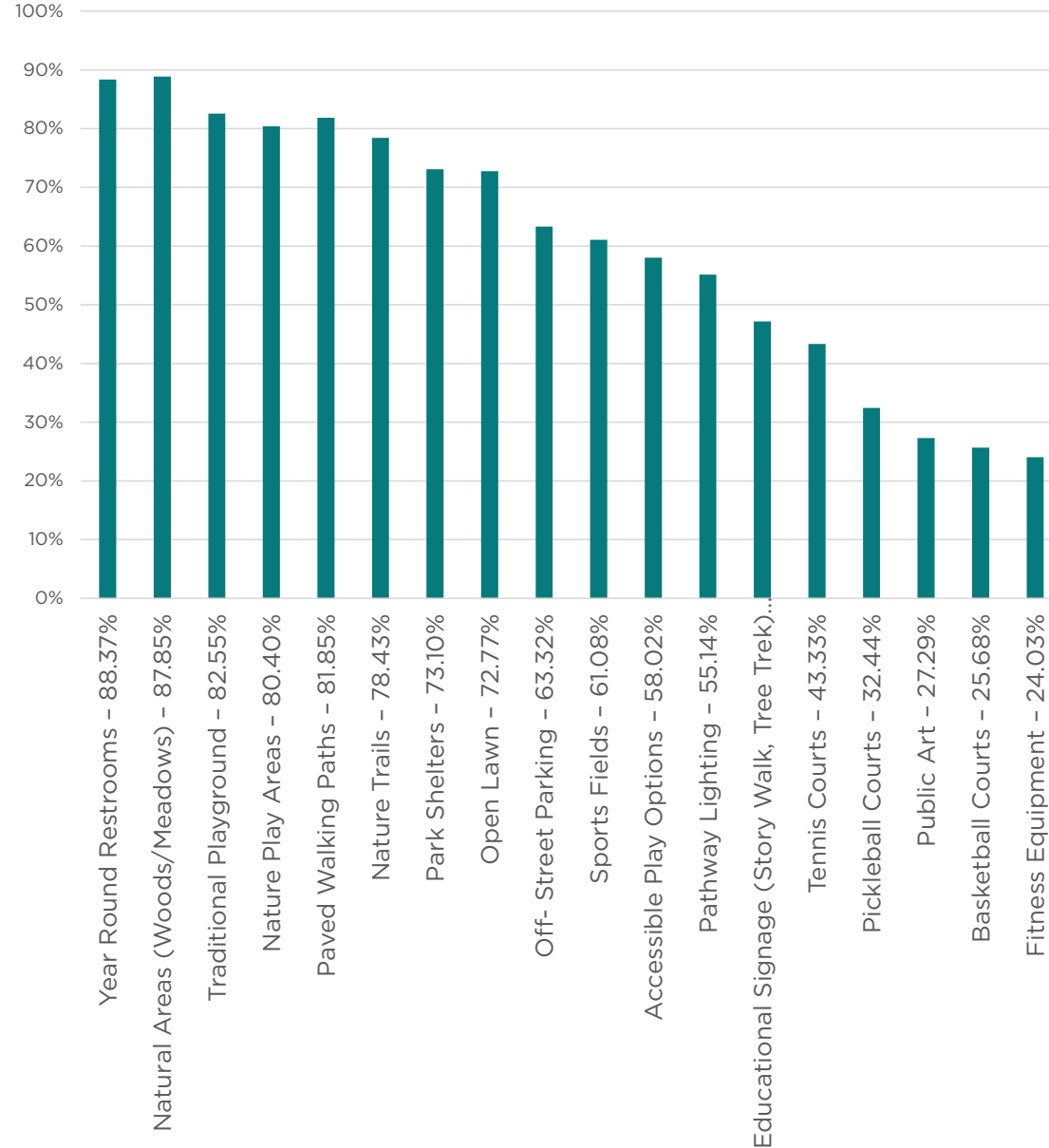
# Community Engagement - Fall 2024 (Phase 1)

Online Survey Results

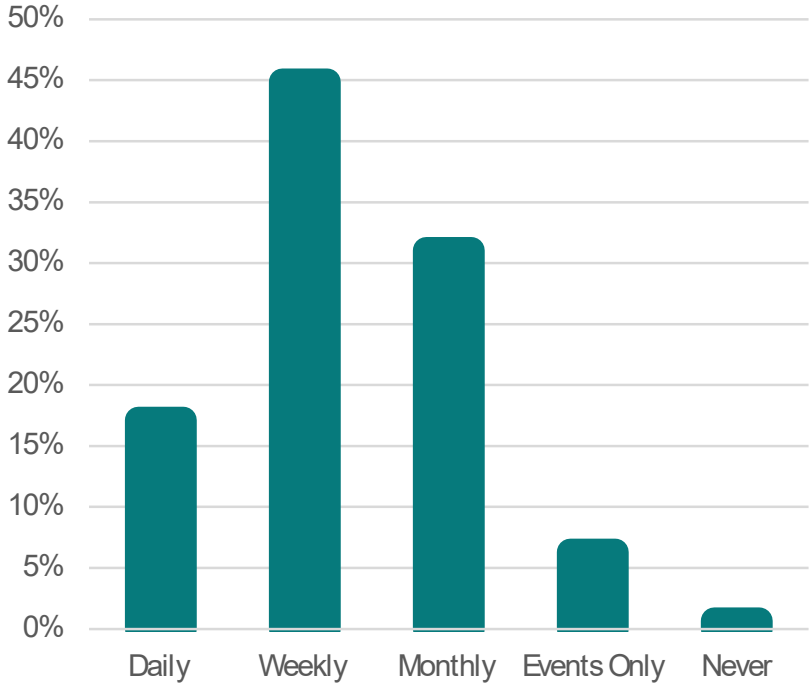
**905** total responses

**97%** of responses were UA residents

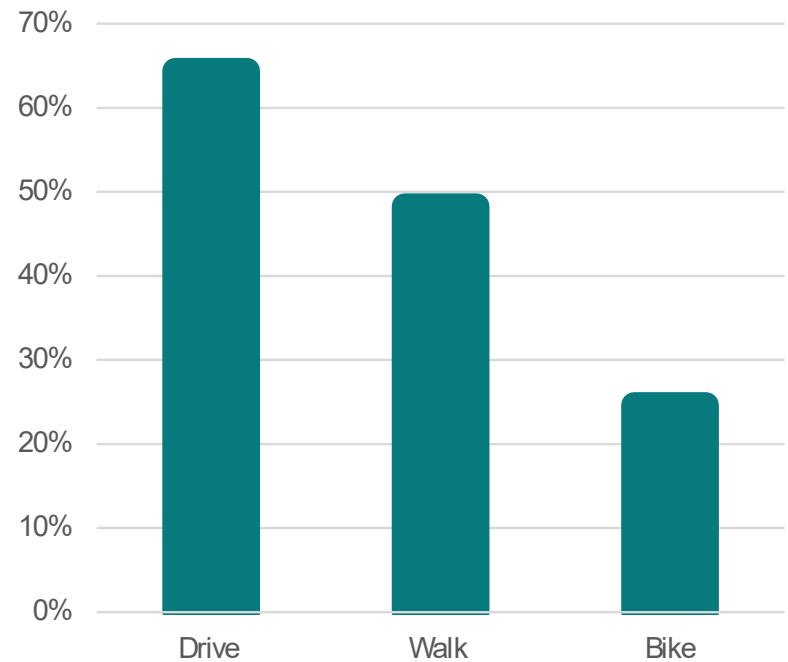
## Please share your level of interest in each of these possible amenities:



## How often do you visit Fancyburg Park?



## How do you and/or your family typically get to Fancyburg Park? (Select all that apply)



# Community Engagement - Fall 2024 (Phase 1)

## Top Takeaways

### Public Input

- More restrooms
- Maintain green space - don't overload it with amenities
- More native trees and pollinator plants
- Dog water fountains and waste bag stations
- Natural play elements
- Expanded playground, with plenty of shade, more swings, and accessible play features
- Strong demand for dedicated pickleball courts, separate from Tennis
- More benches, picnic tables, and covered shelters for shade
- More nature trails - maintain the forested area
- More parking to reduce demand for on-street parking
- More community gathering spaces, such as an amphitheater and picnic areas
- Maintain and improve the StoryWalk and Tree Trek

### Functional Requirements

- Improved Maintenance Facility to support existing park uses
- Simplified truck access for plant deliveries
- Improved athletic field drainage
- Additional location for Day Camp
- Analyze functionality and capacity of current parking layout



# Community Engagement - Spring 2025 (Phase 2)

In Person Feedback

## Let us know your thoughts!

Green Dot indicates a person's vote ●

### Aerial Looking Southwest



### Play Areas



### Nature Stage and Four-Season Shelter



### Expanded Nature Play



# Community Engagement - Spring 2025 (Phase 2)

In Person Feedback

## Let us know your thoughts!

Green Dot indicates a person's vote ●

### Playground Option 1



PLAY OPTION 1 EQUIPMENT  
Timber Play Structures and Rubberized Play Surfacing



PLAY OPTION 1

### Playground Option 2



PLAY OPTION 2 EQUIPMENT  
Steel and Fabric Play Structures and Rubberized Play Surfacing



PLAY OPTION 2



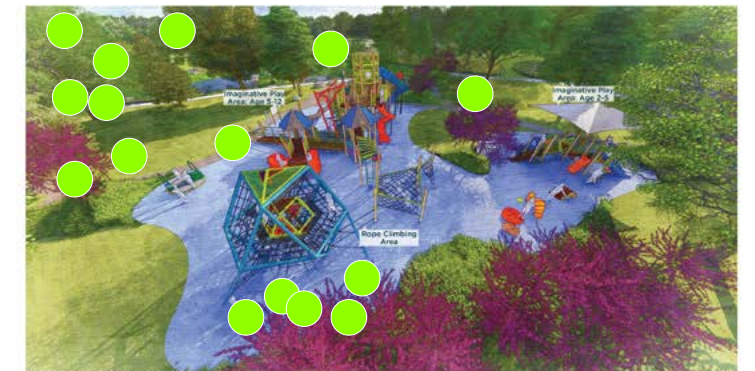
PLAY OPTION 1



PLAY OPTION 1



PLAY OPTION 2



PLAY OPTION 2

# Community Engagement - Spring 2025 (Phase 2)

In Person Feedback

## Let us know your thoughts!

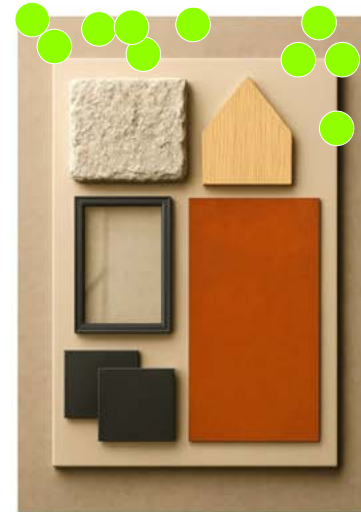
Green Dot indicates a person's vote ●

### Shelter Materials Options



1. Clean & Traditional

A balanced mix of gray brick, dark metals, and cool horizontal siding - inspired by existing neighborhood park structures - creates a familiar palette. Storefront glass adds openness, blending durability with inviting warmth.



2. Stones & Steel

This palette pairs rugged split-face limestone with warm wood, sleek storefront glass, and durable weathered steel, balancing natural texture and industrial strength for a grounded, enduring material expression.



3. Sleek & Modern

This palette combines clean-lined materials, smooth concrete, warm-toned wood, and dark metal, with storefront glazing to create a contemporary, refined aesthetic rooted in simplicity and contrast.

### Shelter A



### Shelter B



### Shelter C



# Community Engagement - Spring 2025 (Phase 2)

In Person Feedback

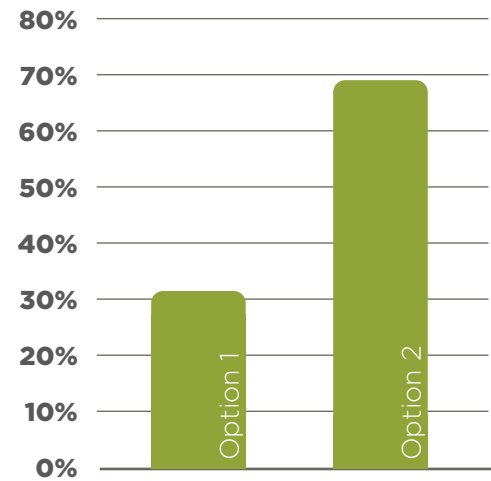
## Let us know your thoughts!

Have additional comments? Grab a sticky note



# Community Engagement - Spring 2025 (Phase 2)

Online Survey Results



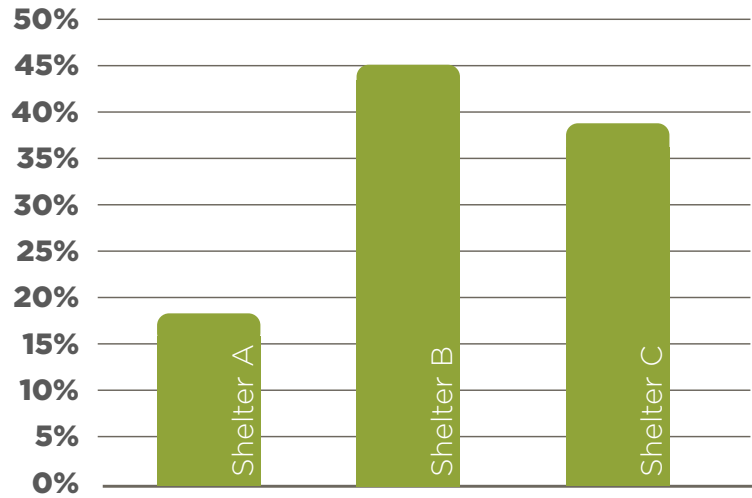
Please select your preferred design between the following two playground alternatives:



Option 1  
Timber Play Structures



Option 2  
Steel & Fabric Play Structures



Please rank the following park shelter designs:



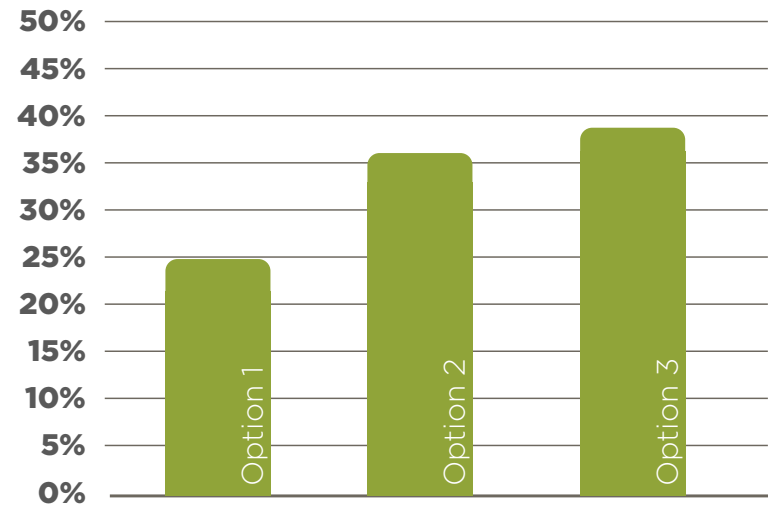
Shelter A  
Tall Hip Roof



Shelter B  
Craftsman Roof



Shelter C  
Single Pitch Roof



Please rank the following shelter materials:



Option 1  
Clean & Traditional



Option 2  
Stones & Steel



Option 3  
Sleek & Modern

## Community Engagement - Spring 2025 (Phase 2)

### Online Survey Results

**602** total  
responses

**96%** of responses were  
UA residents

### Please share your thoughts on the following overall park master plan:

- Many respondents appreciate the inclusion of natural play areas, an amphitheater, and a four-season pavilion.
- Concerns were raised about the interactive wetland, with some fearing it could attract mosquitoes or pose a safety risk for children.
- Several commenters suggested adding more pickleball courts and basketball courts.
- There were mixed feelings about the amphitheater, with some questioning its necessity and potential noise impact on neighbors.
- Many emphasized the importance of maintaining green space and preserving existing trees.
- Suggestions included adding a splash pad instead of wetlands, ensuring ample parking, and improving pedestrian safety with better crosswalks and sidewalks.
- Some commenters expressed the need for more shaded areas, especially over play structures, and more accessible playground equipment for children with disabilities.
- Additional amenities like dog parks, water features, and picnic areas were also suggested by several respondents.

### Please share your thoughts on these park pavilion designs and materials.

- Many respondents prefer a design that blends with the natural surroundings and maintains a traditional, classic appearance.
- There is a significant preference for natural and earthy materials, such as wood and stone, which are perceived as warm and inviting.
- Several participants expressed concerns that sleek and modern designs may look dated over time.
- Option 3, with its lower roof profile and natural wood aesthetic, received positive feedback for its ability to blend into the park environment.
- Options 2 and 3 were favored for their modern design elements and extensive use of glass, providing a bright and open feel.
- Some respondents disliked the use of gray tones and excessive modernity, associating these with trends that might quickly become outdated.
- Participants appreciated designs that are functional, sustainable, and provide ample natural light.
- There were also specific preferences for the durability and maintenance requirements of the materials used.

### Please share your thoughts on why you selected one versus the other and provide any other input on desired playground elements.

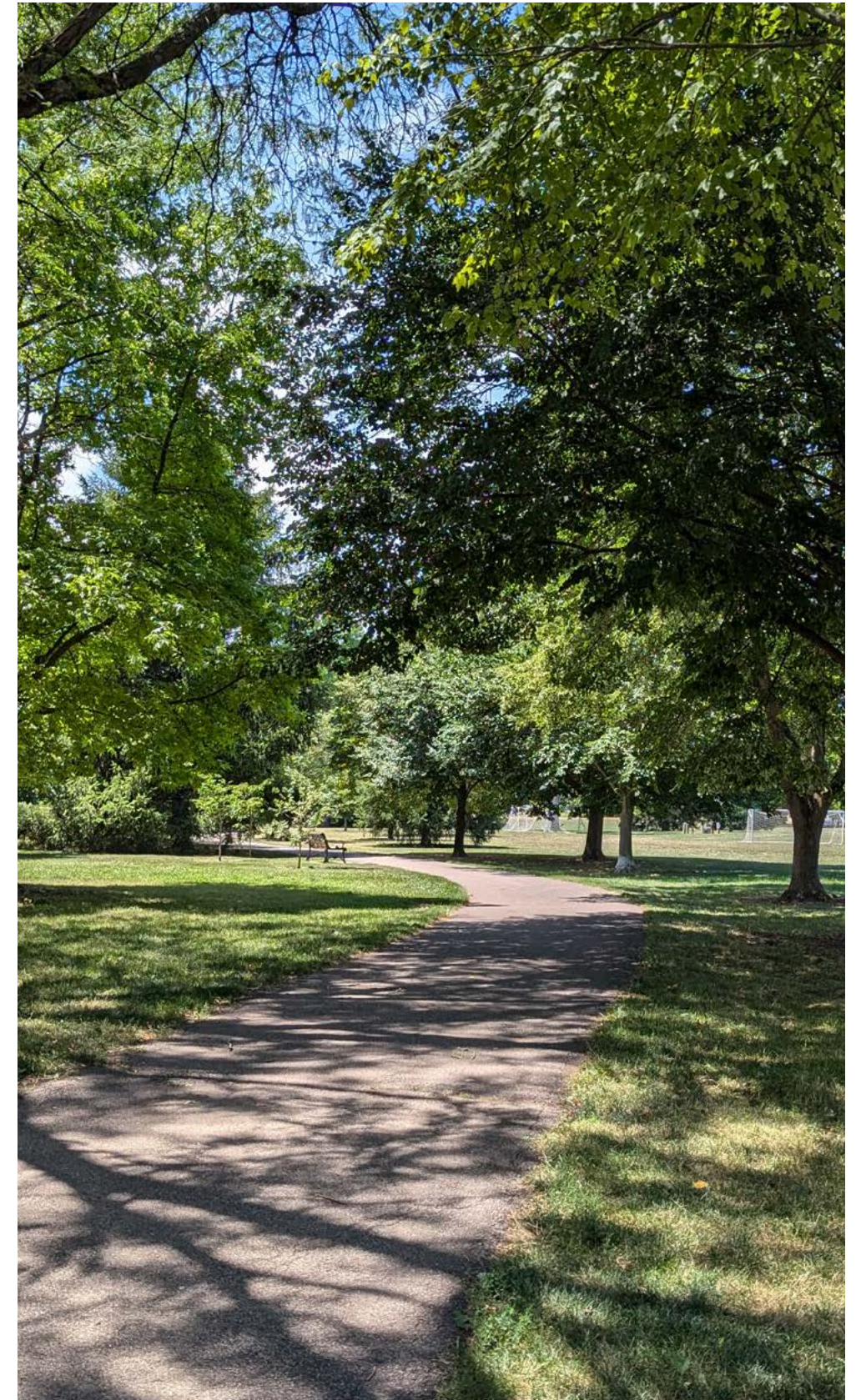
- Preference for natural look: Many respondents preferred the timber structures for their natural appearance and ability to blend with the park's surroundings.
- Concerns about durability: There were worries about the longevity and maintenance of timber structures, including potential issues with splinters and weather damage.
- Variety and engagement: Option 2, the steel and fabric structures, was favored for its variety of play elements, perceived durability, and shaded areas.
- Safety considerations: Some respondents mentioned the importance of safety features, such as avoiding splinters and providing shaded areas to prevent equipment from getting too hot.
- Inclusive play: There was an emphasis on the importance of inclusive play options, ensuring that children of all abilities can enjoy the playground.
- Preference for existing features: Several respondents expressed a preference for maintaining the current playground features, which they found to be excellent and well-suited for a wide age range.
- Mixed feelings about both options: Some respondents had mixed feelings, appreciating aspects of both options, but also expressing concerns about each.

# Community Engagement - Spring 2025 (Phase 2)

Online Survey Results - Top Takeaways

## Public Input

- More parking to reduce demand for on-street parking
- Maintain green space and preserve mature trees
- More native trees and pollinator plants
- Steel and fabric play structures are preferred for their durability and shade
- Four-Season Shelter and nature stage were generally supported but concerns were raised about ensuring that the design is appropriate for the neighborhood
- Expanded nature play was appreciated, but concern was expressed about safety and mosquitos
- Separated pickleball courts are appreciated, but concern was expressed about sound
- Craftsman-style was the preferred Four-Season Shelter design
- Sleek & Modern was the preferred materials palette, although many also appreciated the warmth and durability of wood and stone over more modern elements



# Park Master Plan



# Existing Conditions



## PARK ELEMENTS LEGEND

- 1 Existing Parking Lot (42 Spaces)
- 2 Seasonal Shelter
- 3 Shuffleboard Courts
- 4 Satellite Maintenance Area
- 5 Playground
- 6 Story Book Walk
- 7 Nature Play Area
- 8 Woodland Path
- 9 Existing Athletic Fields
- 10 Fitness Equipment
- 11 Park Plaza
- 12 Tennis & Pickleball Courts
- 13 Trash / Recycling Enclosure
- 14 Compost Drop-off



# Site Plan Enlargement

September 2024 Plan



### PARK ELEMENTS LEGEND

- 1 Existing Parking Lot (42 Spaces)
- 2 Four-Season Shelter
- 3 Open-Air Shelter
- 4 Satellite Maintenance Area (Relocation of Existing in Park Maintenance)
- 5 Playground
- 6 Story Book Walk
- 7 Nature Play Area
- 8 Woodland Path
- 9 Meadow Buffer
- 10 Expanded Nature Play
- 11 Existing Athletic Fields
- 12 Park Plaza
- 13 Tennis & Pickleball Courts
- 14 Pollinator Meadow
- 15 Nature Stage
- 16 Trash / Recycling Enclosure
- 17 Compost Drop-off



# Site Plan Enlargement

June 2025 Plan

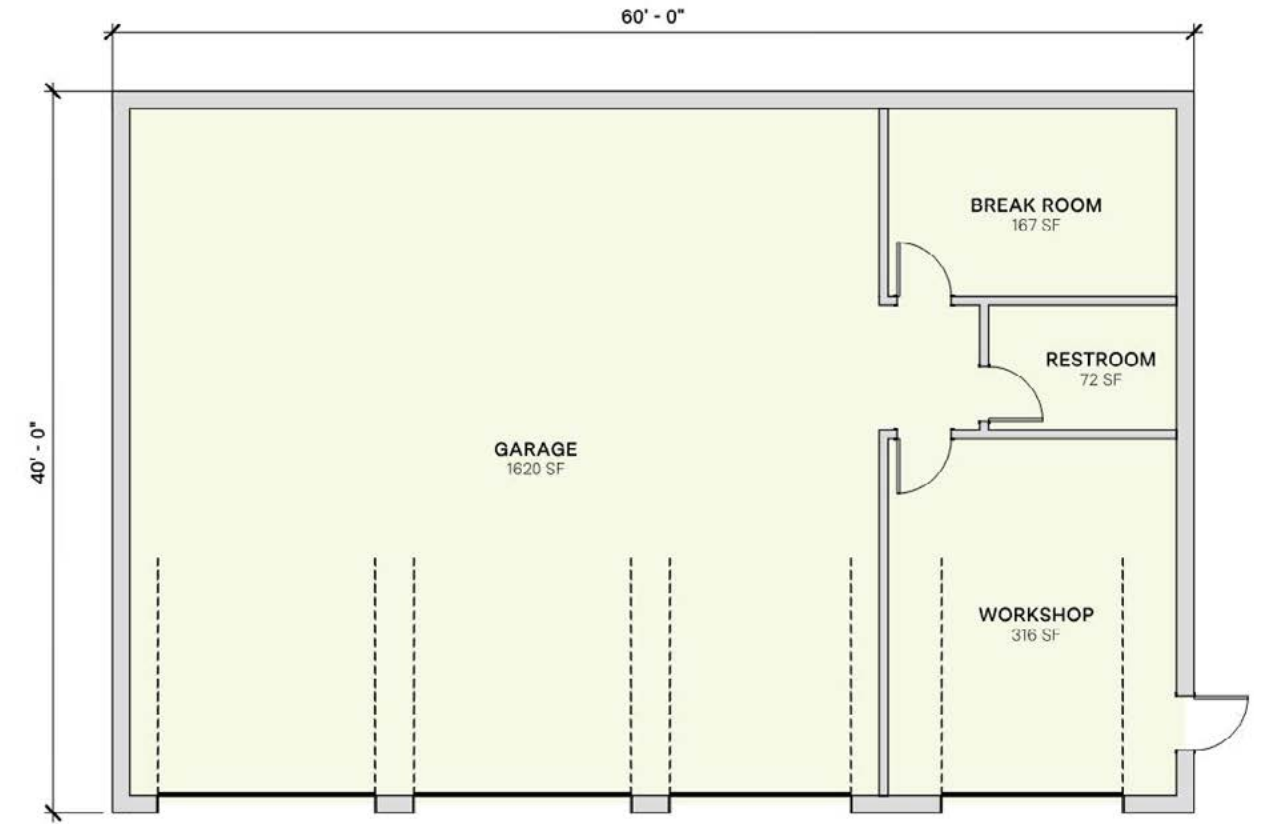
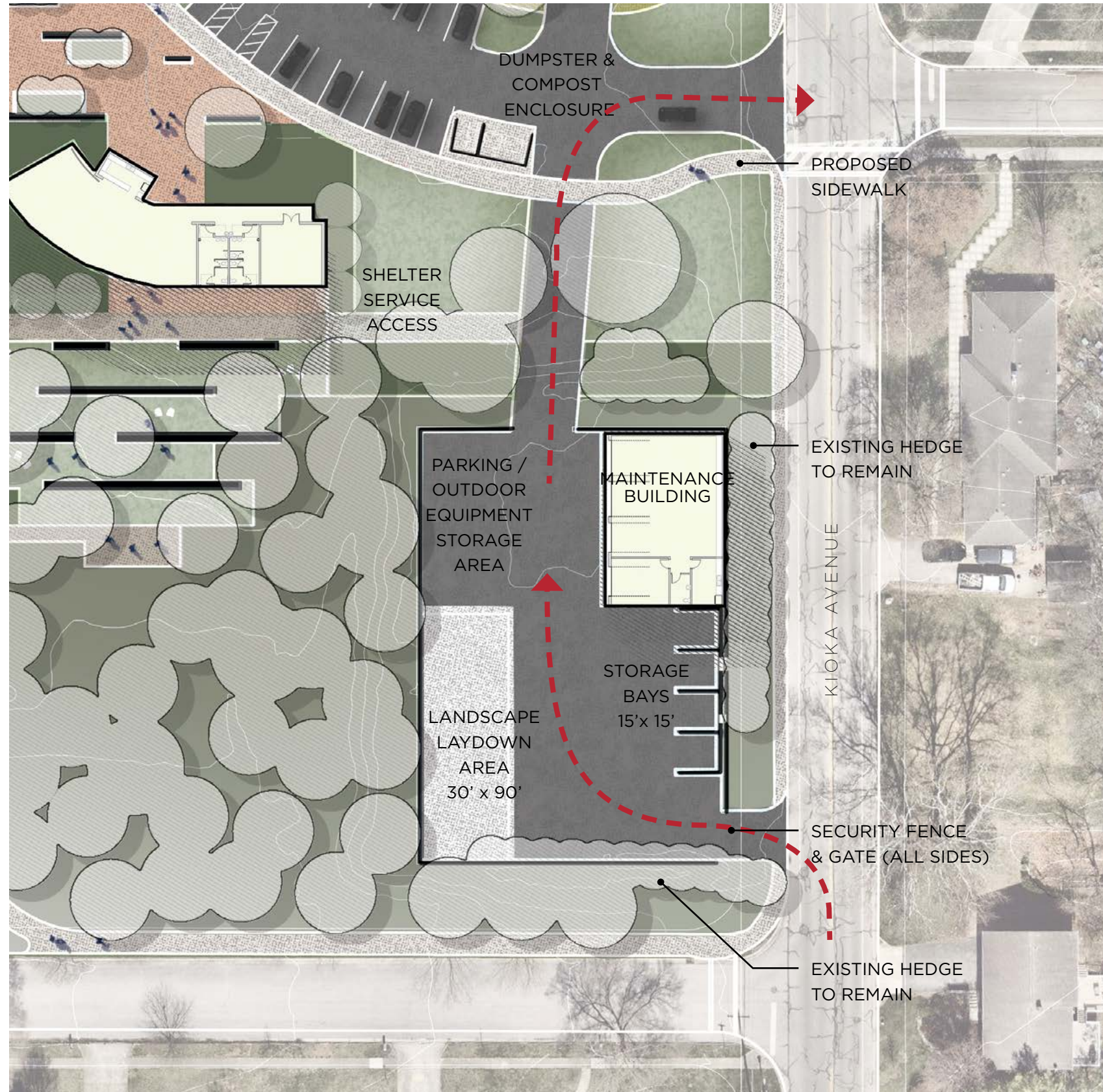


### PARK ELEMENTS LEGEND

- 1 Parking Lot (88 Spaces)
- 2 Four-Season Shelter
- 3 Open-Air Shelter
- 4 Stormwater Detention Area
- 5 Satellite Maintenance Area (Relocation of Existing in Park Maintenance)
- 6 Playground
- 7 Story Book Walk
- 8 Nature Play Area
- 9 Woodland Path
- 10 Meadow Buffer
- 11 Expanded Nature Play
- 12 Renovated Athletic Fields
- 13 Park Plaza
- 14 Tennis Courts
- 15 Pickleball Courts
- 16 Courts Hitting Wall
- 17 Bioswale (in parking lot)
- 18 Pollinator Meadow
- 19 Nature Stage
- 20 Trash / Recycling Enclosure
- 21 Compost Drop-off
- 22 Sidewalk
- ← Pedestrian Access

# Satellite Maintenance Area (Phase I)

Relocation of Existing in Park Maintenance

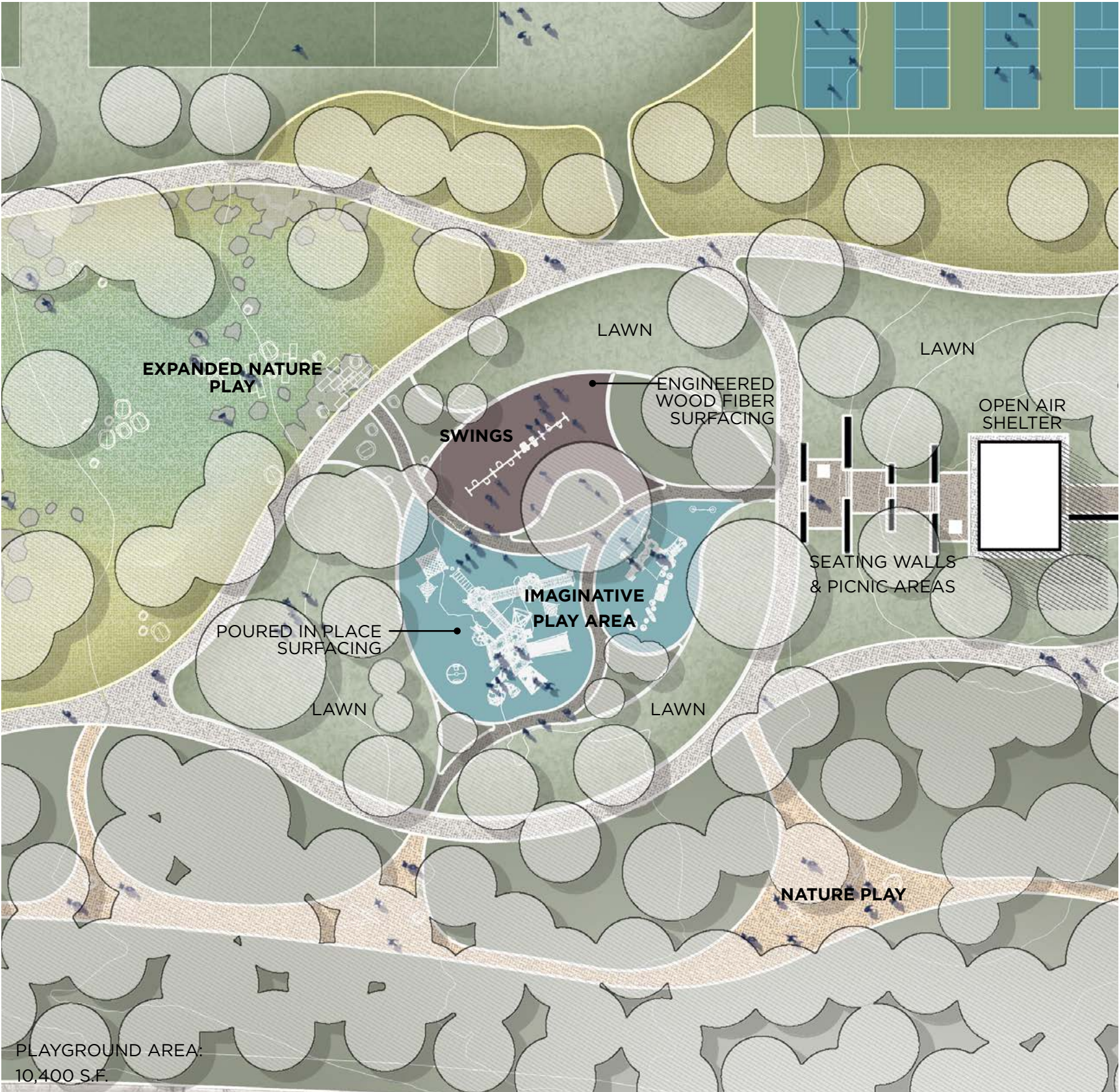


Service Building Concept Plan



Satellite Maintenance Area (Wickliffe / Kioka)

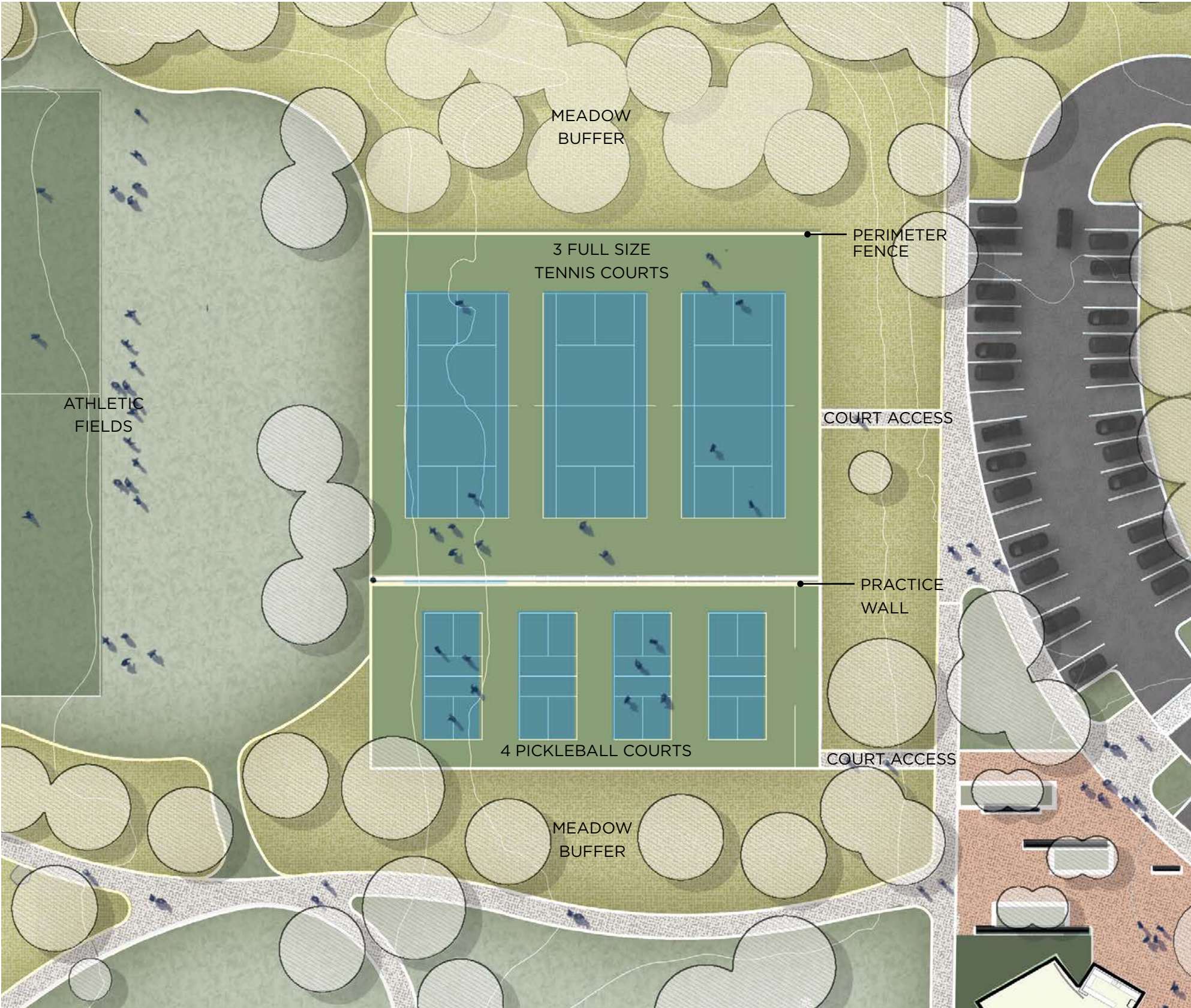
# Playground



# Playground



# Tennis & Pickleball



# Expanded Nature Play

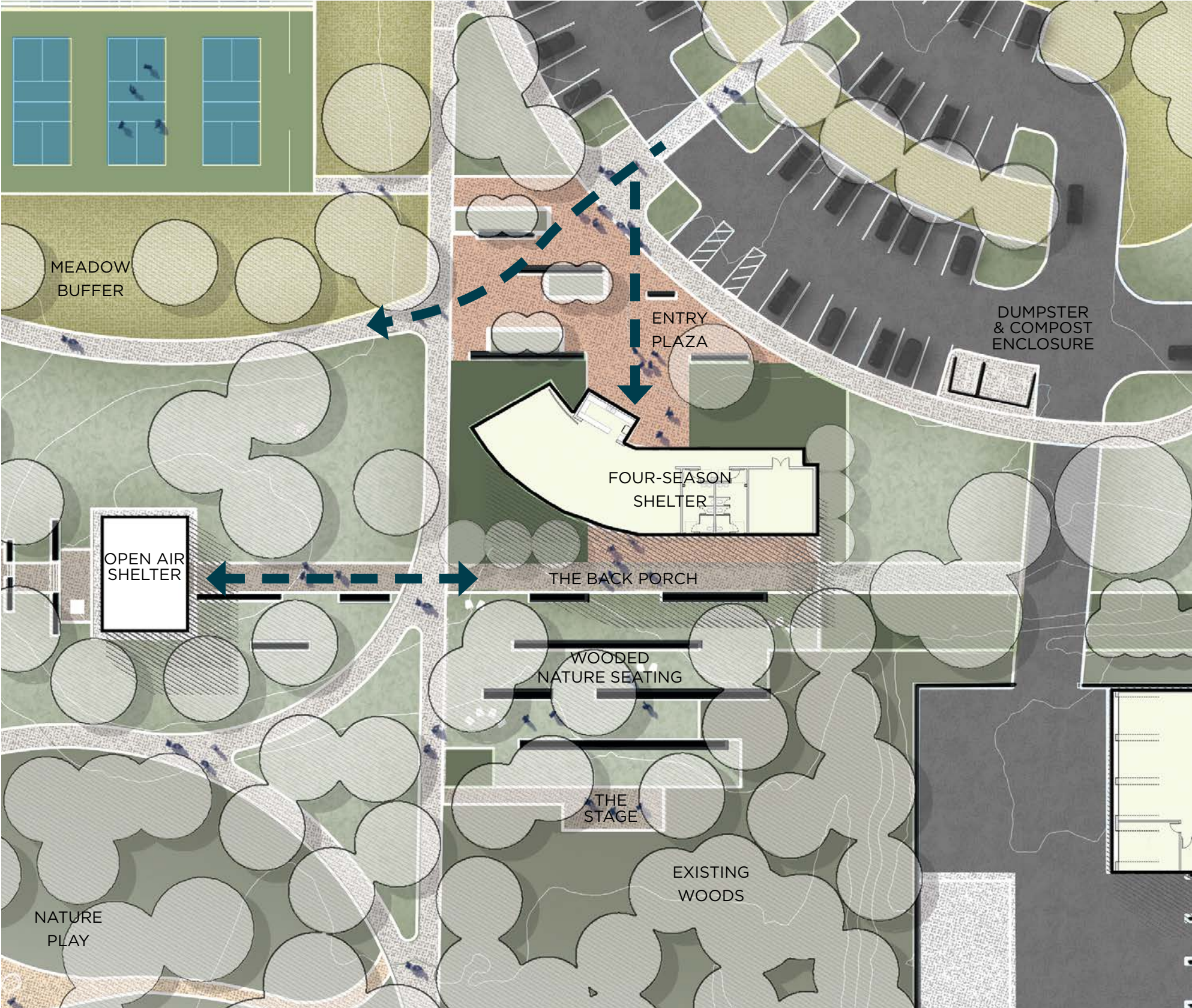


# Expanded Parking

EXISTING SPACES: 42  
PROPOSED SPACES: 88

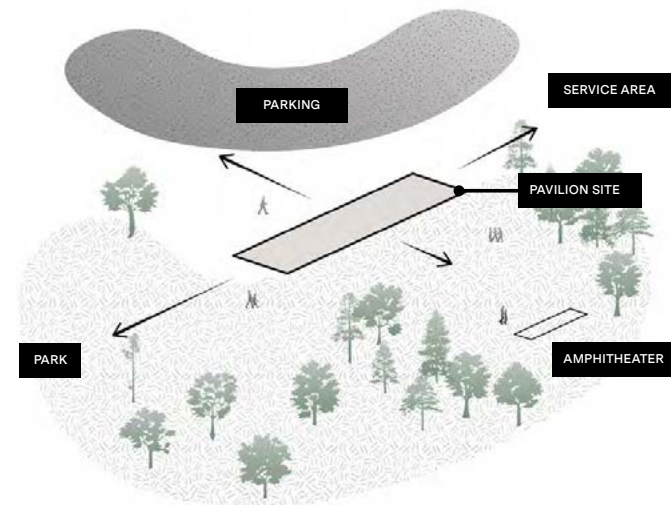


# Four Season Shelter



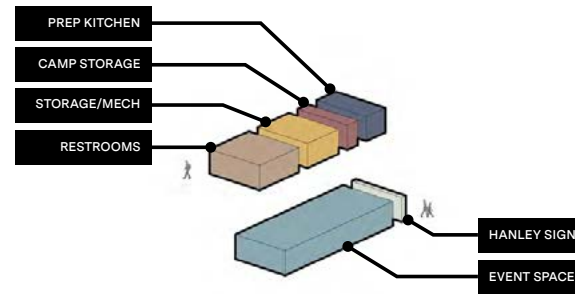
# Four Season Shelter

## Concept Diagrams



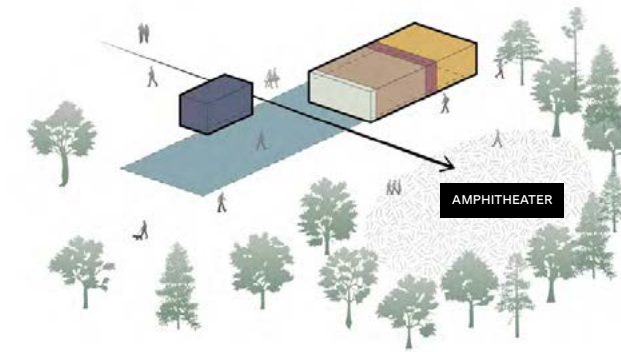
Orientation

The event pavilion is perfectly located at the entry to the park. The pavilion site sits at the center of the activity, acting as a hub to help visitors and park staff transition from parking to amphitheater, or service area to the greater park beyond.



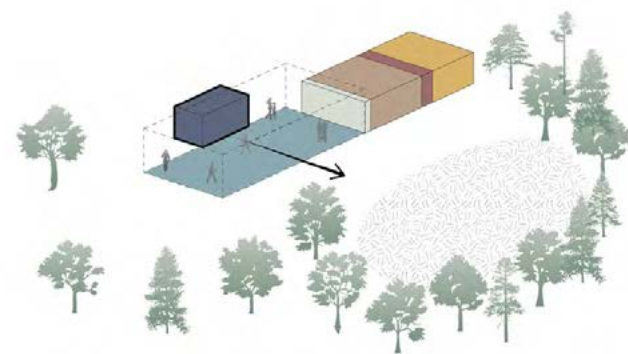
Program

The event pavilion will be an efficient structure housing program spaces to support the greater park including public restrooms, storage and mechanical space, camp storage space, a prep kitch, a large event space, and signage in tribute to the Hanley family.



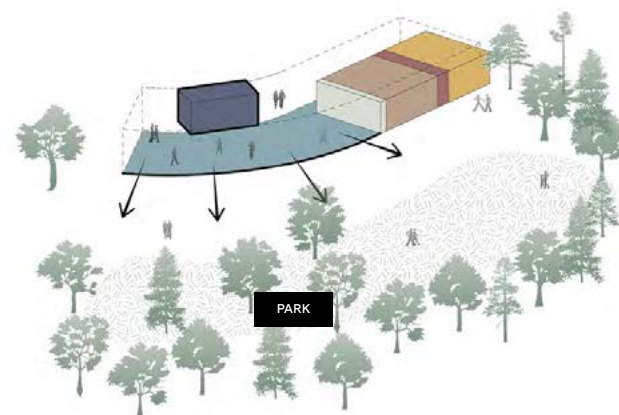
Gateway

The program spaces are combined into blocks and positioned in such a way to create a gateway that frames the amphitheater and park space beyond the pavilion. The gateway creates clear entry and guides the primary circulation route through the pavilion.



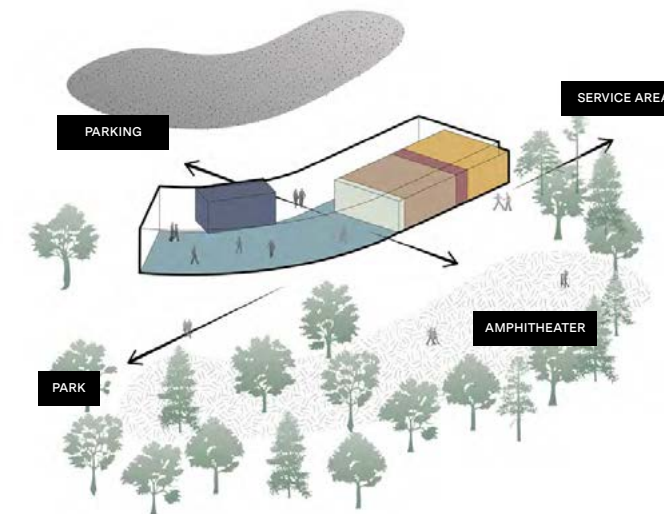
Events

The prep kitchen acts as both the edge of the gateway and the anchor for the event space. The kitchen massing is centered on the event space and acts as a back-drop providing support for camps, community events, and various rental programming within the space.



Panorama

In concert with the dynamic nature of the park, the event space bends to provide a wider panorama for viewing the park from the event space. Leaving the event space open and surrounded by glass, the interior of the pavilion becomes part of the park itself.

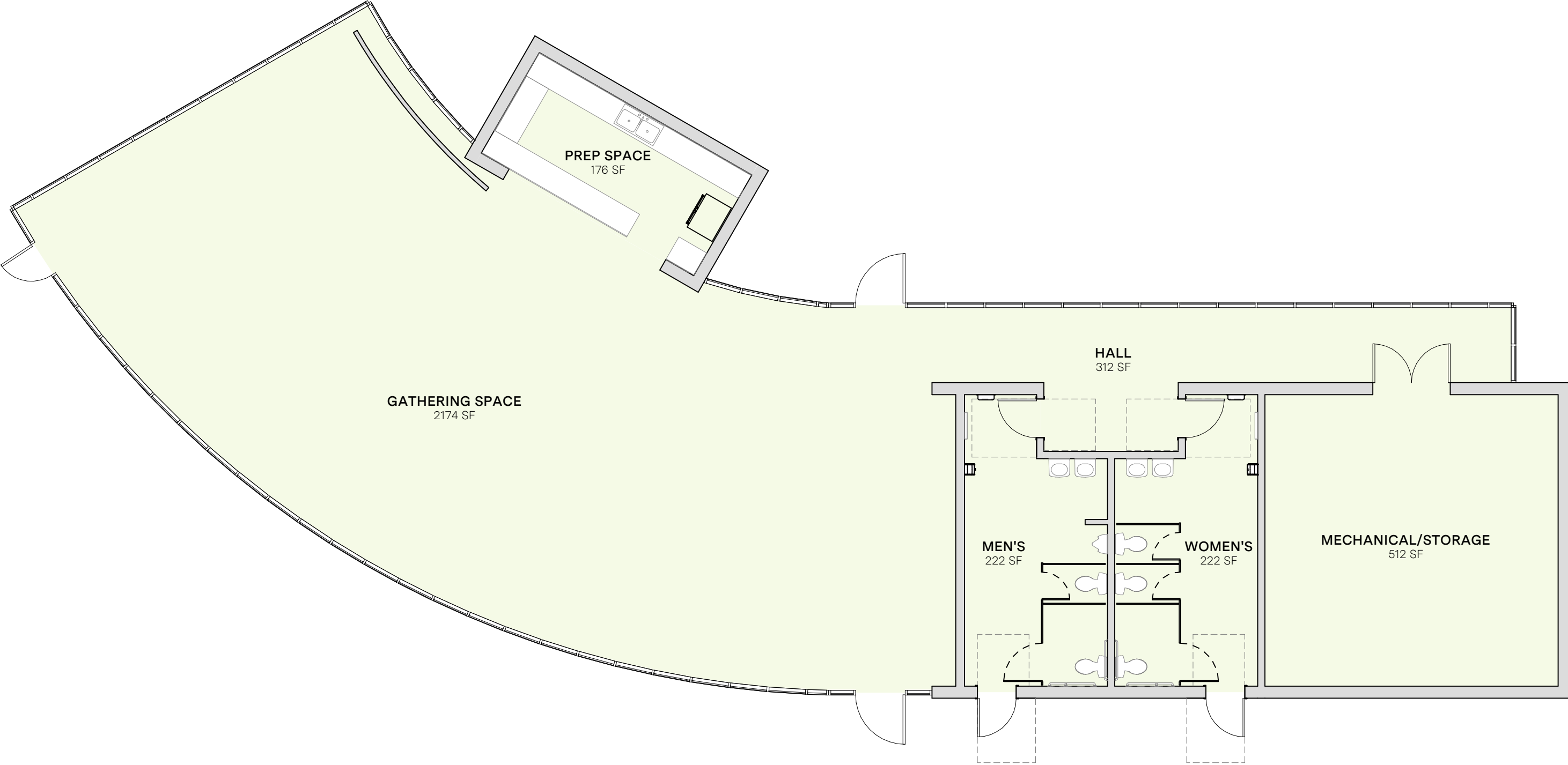


Connections

The pavilion becomes a space where the natural diversity of the park and the community takes center stage. With direct connections to parking, service areas, the adjacent amphitheater, and the park beyond, the pavilion provides the flexibility to serve the community for any occasion.

# Four Season Shelter

## Floorplan



## Four Season Shelter



### 3. Sleek & Modern

This palette combines clean-lined materials, smooth concrete, warm-toned wood, and dark metal, with storefront glazing to create a contemporary, refined aesthetic rooted in simplicity and contrast.



## Schedule

<b>Public Input and Concept Presented to City Council</b>	<b>June 16, 2025</b>
<b>Final Master Plan Presented to City Council for Motion of Support</b>	<b>Fall 2025</b>
<b>Design of Service Area</b>	<b>Fall 2025</b>
<b>Construction of Service Area</b>	<b>Spring/Summer 2026</b>
<b>Detailed Design of Park Improvements</b>	<b>Early 2026</b>
<b>Construction of Park Improvements</b>	<b>2027</b>

